

## Anti-Argininosuccinate Lyase/ASL Antibody Picoband™

Catalog Number: A00742-1

### About ASL

ASL (argininosuccinatelyase, also known as argininosuccinase) is an enzyme that catalyzes the reversible breakdown of argininosuccinate (ASA) producing the amino acid arginine and dicarboxylic acid fumarate. Located in liver cytosol, ASL is the fourth enzyme of the urea cycle and involved in the biosynthesis of arginine in all species and the production of urea in ureotelic species. Mutations in ASL, resulting low activity of the enzyme, increase levels of urea in the body and result in various side effects. The ASL gene is located on chromosome 7 between the centromere (junction of the long and short arm) and the long (q) arm at position 11.2, from base pair 64,984,963 to base pair 65,002,090.

### Overview

Product Name	Anti-Argininosuccinate Lyase/ASL Antibody Picoband™
Reactive Species	Mouse, Rat
Description	Boster Bio Anti-Argininosuccinate Lyase/ASL Antibody Picoband™ catalog # A00742-1. Tested in WB applications. This antibody reacts with Mouse, Rat.
Application	WB
Clonality	Polyclonal
Formulation	Each vial contains 4mg Trehalose, 0.9mg NaCl, 0.2mg Na2HPO4, 0.05mg NaN3.
Storage Instructions	Store at -20°C for one year from date of receipt. After reconstitution, at 4°C for one month. It can also be aliquotted and stored frozen at -20°C for six months. Avoid repeated freeze-thaw cycles.
Host	Rabbit
Uniprot ID	P04424

### Technical Details

Immunogen	A synthetic peptide corresponding to a sequence at the N-terminus of human Argininosuccinate Lyase/ASL, which shares 97.4% and 92.1% amino acid (aa) sequence identity with mouse and rat Argininosuccinate Lyase/ASL, respectively.
Predicted Reactive Species	Human
Recommended Detection Systems	Boster recommends Enhanced Chemiluminescent Kit with anti-Rabbit IgG (EK1002) for Western blot.
Cross Reactivity	No cross-reactivity with other proteins.
Isotype	Rabbit IgG
Form	Lyophilized

Concentration	Adding 0.2 ml of distilled water will yield a concentration of 500 ug/ml.
Purification	Immunogen affinity purified.
Suggested Dilutions	<p>Dilute the sample so that the expected range of concentrations fall within the detection range of this kit.</p> <p>If the expected range of concentration is unknown, a pilot test should be conducted to decide the optimal dilution ratio for your samples.</p> <p>Some PubMed article(s) citing the expression level of this target are as follows:</p> <p>Boster Bio's internal QC testing used:</p> <p>Western blot, 0.1-0.5ug/ml</p>

## Anti-Argininosuccinate Lyase/ASL Antibody Picoband™ (A00742-1) Images

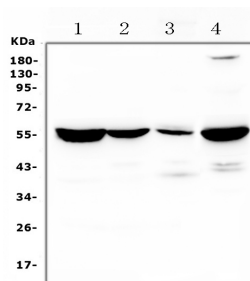


Figure 1. Western blot analysis of Argininosuccinate Lyase/ASL using anti-Argininosuccinate Lyase/ASL antibody (A00742-1).

Electrophoresis was performed on a 5-20% SDS-PAGE gel at 70V (Stacking gel) / 90V (Resolving gel) for 2-3 hours. The sample well of each lane was loaded with 50ug of sample under reducing conditions.

Lane 1: rat liver tissue lysates,

Lane 2: rat kidney tissue lysates,

Lane 3: rat lung tissue lysates,

Lane 4: mouse liver tissue lysates.

After Electrophoresis, proteins were transferred to a Nitrocellulose membrane at 150mA for 50-90 minutes.

Blocked the membrane with 5% Non-fat Milk/ TBS for 1.5 hour at RT. The membrane was incubated with rabbit anti-Argininosuccinate Lyase/ASL antigen affinity purified polyclonal antibody (Catalog # A00742-1) at 0.5 ug/mL overnight at 4 then washed with TBS-0.1%Tween 3 times

with 5 minutes each and probed with a goat anti-rabbit IgG-HRP secondary antibody at a dilution of 1:10000 for 1.5 hour at RT. The signal is developed using an Enhanced Chemiluminescent detection (ECL) kit (Catalog # EK1002)

with Tanon 5200 system. A specific band was detected for Argininosuccinate Lyase/ASL at approximately 52KD. The expected band size for Argininosuccinate Lyase/ASL is at 52KD.

## Submit a product review to Biocompare.com

Submit a review of this product to Biocompare.com to receive a \$20 Amazon.com giftcard! Your reviews help your fellow scientists make the right decisions. Thank you for your contribution.



Anti-Argininosuccinate Lyase/ASL Antibody™