

## Anti-Cullin-3 Cul3 Antibody

Catalog Number: A00747

### About CUL3

Cul3 antibody is ideal for Cell Biology, Cancer and Ubiquitin research. Cullins assemble a potentially large number of ubiquitin ligases by binding to the RING protein ROC1 to catalyse polyubiquitination, as well as binding to various specificity factors to recruit substrates. Cullin 3 is an essential component of the SCF (SKP1-CUL1-F-box protein) E3 ubiquitin ligase complex, which mediates the ubiquitination of proteins involved in cell cycle progression, signal transduction and transcription. In the SCF complex, cul3 serves as a rigid scaffold that organizes the SKP1-F-box protein and RBX1 subunits. Cul3 may also contribute to catalysis through positioning of the substrate and the ubiquitin-conjugating enzyme. Unlike Cul1 and Cul2, Cul3 seems not to be a part of the SCF complex consisting of CUL1, RBX1, SKP1 and SKP2. Cul3 also interacts with RNF7 and is part of a complex with TIP120A/CAND1, Cyclin E and RBX1.

### Overview

Product Name	Anti-Cullin-3 Cul3 Antibody
Reactive Species	Human
Description	Boster Bio Anti-Cullin-3 Cul3 Antibody (Catalog # A00747). Tested in IHC, IP, WB applications. This antibody reacts with Human.
Application	IP, IHC, WB
Clonality	Polyclonal
Formulation	0.01% (w/v) Sodium Azide
Storage Instructions	Store anti-Cul3 at -20°C prior to opening. Aliquot contents and freeze at -20°C or below for extended storage. Avoid cycles of freezing and thawing. Centrifuge product if not completely clear after standing at room temperature. This product is stable for several weeks at 4°C as an undiluted liquid. Dilute only prior to immediate use. Expiration date is one (1) year from date of opening. (Ship on dry ice.)
Host	Rabbit
Uniprot ID	Q13618

### Technical Details

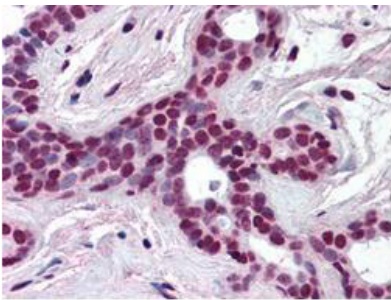
Immunogen	Cul3 antibody was prepared from whole rabbit serum produced by repeated immunizations with a synthetic peptide corresponding to the N-Terminal near amino acids 1-25 of Human Cul3 coupled to KLH.
Predicted Reactive Species	Bovine, Canine, Equine, Goat, Guinea Pig, Rabbit, Yeast, Zebrafish
Isotype	Antiserum
Form	Liquid (sterile filtered)

Concentration	85 mg/mL by Refractometry
Purification	Anti-Cul3 antibody is monospecific antiserum processed by delipidation and defibrination followed by sterile filtration. This product reacts with human Cullin 3. Cross-reactivity is expected against mouse Cul3 based on sequence homology. Cross-reactivity with other human cullins is unlikely based on sequence homology.
Suggested Dilutions	<p>Dilute the sample so that the expected range of concentrations fall within the detection range of this kit.</p> <p>If the expected range of concentration is unknown, a pilot test should be conducted to decide the optimal dilution ratio for your samples.</p> <p>Some PubMed article(s) citing the expression level of this target are as follows:</p> <p>Boster Bio's internal QC testing used:</p> <p>ELISA: 1:2,000 - 1:10,000</p> <p>IHC: User optimized</p> <p>IP: 1:100</p> <p>WB: 1:500 - 1:1,000</p>

## Anti-Cullin-3 Cul3 Antibody (A00747) Images



Most modifiers mature by proteolytic processing from inactive precursors (a; amino acid). Arrowheads point to the cleavage sites. Ubiquitin is expressed either as polyubiquitin or as a fusion with ribosomal proteins. Conjugation requires activating (E1) and conjugating (E2) enzymes that form thioesters (S) with the modifiers. Modification of cullins by RUB involves SCF(SKP1/cullin-1/F-box protein) /CBC(cullin-2/elongin B/elonginC) -like E3 enzymes that are also involved in ubiquitination. In contrast to ubiquitin, the UBLs do not seem to form multi-UBL chains. UCRP(ISG15) resembles two ubiquitin moieties linked head-to-tail. Whether HUB1 functions as a modifier is currently unclear. APG12 and URM1 are distinct from the other modifiers because they are unrelated in sequence to ubiquitin. Data contributed by S.Jentsch, see references below.



Anti-CUL3 antibody was diluted 1:500 to detect CUL3 in human breast tissue. Tissue was formalin fixed and paraffin embedded. No pre-treatment of sample was required. The image shows the localization of antibody as the precipitated red signal, with a hematoxylin purple nuclear counter stain.

## Submit a product review to Biocompare.com

Submit a review of this product to Biocompare.com to receive a \$20 Amazon.com giftcard! Your reviews help your fellow scientists make the right decisions. Thank you for your contribution.



Anti-Cullin-3 Cul3 Antibody