

Anti-IL-21R (ED) Antibody

Catalog Number: A00808

Introduction

The antibody is directed against Thy-1 present in human brain, with small amounts in kidney. The 23.5kD a Thy-1 antigen is absent from human thymocytes and peripheral lymphocytes. Thymus, lymph node and spleen have small populations of F15-42-1-5 positive cells.

This antibody is routinely tested by flow cytometric analysis. Flow cytometry and other applications were tested during antibody development or are reported in the literature.

Application Information

Each lot of this antibody has been quality control tested by flow cytometric analysis of human PBMCs. For flow cytometric staining, the recommended use of this antibody is $\leq 0.5\mu\text{g}$ per 1×10^6 cells in $100\mu\text{l}$ of staining volume. It is strongly suggested that the antibody reactivity be empirically titrated for optimal performance in the application of interest.

Overview

Product Name	Anti-IL-21R (ED) Antibody
Reactive Species	Human, Mouse, Rat
Description	Boster Bio Anti-IL-21R (ED) Antibody (Catalog# A00808). Tested in IHC, WB application(s). This antibody reacts with Human, Mouse, Rat.
Application	IHC, WB
Clonality	Polyclonal CFA-18
Formulation	Liquid. In PBS containing 0.02% sodium azide.
Storage Instructions	Store at -20°C for one year. For short-term storage and frequent use, store at 4°C for up to one month. Avoid repeated freeze-thaw cycles.
Host	Rabbit
Uniprot ID	Q9HBE5

Technical Details

Immunogen	Synthetic peptide corresponding to a portion of human IL-21R precursor
Predicted Reactive Species	Bovine, Chicken, Xenopus Laevis, Xenopus Tropicalis, Zebrafish
Cross Reactivity	Predicted species reactivity based on epitope sequence homology: mouse, gerbil.
Isotype	Rabbit IgG

Form	Liquid
Concentration	0.5-1mg/ml, actual concentration vary by lot. Use suggested dilution ratio to decide dilution procedure.
Purification	Peptide affinity purified.
Suggested Dilutions	<p>Dilute the sample so that the expected range of concentrations fall within the detection range of this kit.</p> <p>If the expected range of concentration is unknown, a pilot test should be conducted to decide the optimal dilution ratio for your samples.</p> <p>Some PubMed article(s) citing the expression level of this target are as follows:</p> <p>Boster Bio's internal QC testing used:</p> <p>Immunohistochemistry (10µg/ml)</p> <p>Western Blot (0.5- 1.0µg/ml). Detects a band of ~60kDa.</p> <p>Suggested dilutions/conditions may not be available for all applications. Optimal conditions must be determined individually for each application.</p>

Anti-IL-21R (ED) Antibody (A00808) Images

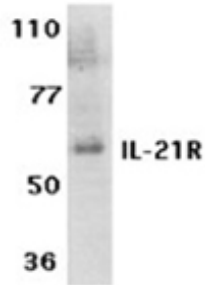


Figure 1. Western blot analysis of IL21R using anti-IL21R antibody (A00808). Electrophoresis was performed on a 5-20% SDS-PAGE gel at 70V (Stacking gel) / 90V (Resolving gel) for 2-3 hours. The sample well of each lane was loaded with 50ug of sample under reducing conditions. After Electrophoresis, proteins were transferred to a Nitrocellulose membrane at 150mA for 50-90 minutes. Blocked the membrane with 5% Non-fat Milk/ TBS for 1.5 hour at RT. The membrane was incubated with rabbit anti-IL21R antigen affinity purified polyclonal antibody (Catalog # A00808) at 0.5 ug/mL overnight at 4°C, then washed with TBS-0.1%Tween 3 times with 5 minutes each and probed with a goat anti-Rabbit IgG-HRP secondary antibody at a dilution of 1:10000 for 1.5 hour at RT. The signal is developed using an Enhanced Chemiluminescent detection (ECL) kit (Catalog # SA1022) with Tanon 5200 system. A specific band was detected for IL21R.

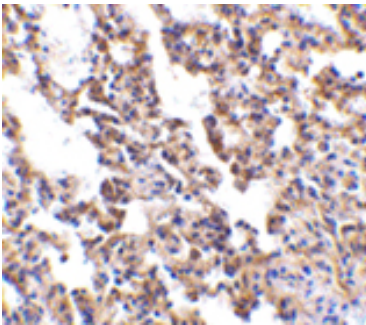


Figure 2. IHC analysis of IL21R using anti-IL21R antibody (A00808). IL21R was detected in paraffin-embedded section. Heat mediated antigen retrieval was performed in citrate buffer (pH6, epitope retrieval solution) for 20 mins. The tissue section was blocked with 10% goat serum. The tissue section was then incubated with 1ug/ml rabbit anti-IL21R Antibody (A00808) overnight at 4°C. Biotinylated goat anti Rabbit IgG antibody was used as secondary antibody and incubated for 30 minutes at 37°C. The tissue section was developed using Streptavidin-Biotin-Complex (SABC)(Catalog # SA1022) with DAB as the chromogen.

Submit a product review to Biocompare.com

Submit a review of this product to Biocompare.com to receive a \$20 Amazon.com giftcard! Your reviews help your fellow scientists make the right decisions. Thank you for your contribution.



Anti-IL-21R (ED) Antibody