

Anti-TGF beta Receptor I/TGFB1 Antibody Picoband™

Catalog Number: A00832

About TGFB1

Transforming growth factor, beta receptor I is a TGF beta receptor. TGFB1 is its human gene. The protein encoded by this gene forms a heteromeric complex with type II TGF-beta receptors when bound to TGF-beta, transducing the TGF-beta signal from the cell surface to the cytoplasm. Mutations in this gene have been associated with Loeys-Dietz aortic aneurysm syndrome (LDAS). TGFB1 regulates cell cycle progression by a unique signaling mechanism that involves its binding to TGFB2 and activation of TGFB1. Both are transmembrane serine/threonine receptor kinases. The TGFB1 receptor may be inactivated in many of the cases of human tumor cells refractory to TGF-beta-mediated cell cycle arrest.

Overview

Product Name	Anti-TGF beta Receptor I/TGFB1 Antibody Picoband™
Reactive Species	Human
Description	Boster Bio Anti-TGF beta Receptor I/TGFB1 Antibody Picoband™ catalog # A00832. Tested in ELISA, WB applications. This antibody reacts with Human.
Application	ELISA, WB
Clonality	Polyclonal
Formulation	Each vial contains 4mg Trehalose, 0.9mg NaCl, 0.2mg Na2HPO4.
Storage Instructions	Store at -20°C for one year from date of receipt. After reconstitution, at 4°C for one month. It can also be aliquotted and stored frozen at -20°C for six months. Avoid repeated freeze-thaw cycles.
Host	Rabbit
Uniprot ID	P36897

Technical Details

Immunogen	E.coli-derived human TGFB1 recombinant protein (Position: L34-K490).
Predicted Reactive Species	Human
Recommended Detection Systems	Boster recommends Enhanced Chemiluminescent Kit with anti-Rabbit IgG (EK1002) for Western blot.
Cross Reactivity	No cross-reactivity with other proteins
Isotype	Rabbit IgG
Form	Lyophilized
Concentration	Adding 0.2 ml of distilled water will yield a concentration of 500 ug/ml.

Purification	Immunogen affinity purified.
Suggested Dilutions	<p>Dilute the sample so that the expected range of concentrations fall within the detection range of this kit.</p> <p>If the expected range of concentration is unknown, a pilot test should be conducted to decide the optimal dilution ratio for your samples.</p> <p>Some PubMed article(s) citing the expression level of this target are as follows:</p> <p>Boster Bio's internal QC testing used:</p> <p>Western blot, 0.25-0.5ug/ml, Human</p> <p>Direct ELISA, 0.1-0.5ug/ml, Human</p>

Anti-TGF beta Receptor I/TGFBR1 Antibody Picoband™ (A00832) Images

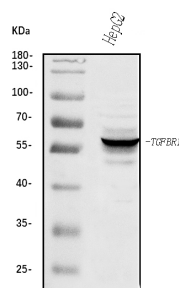


Figure 1. Western blot analysis of TGF Beta Receptor I/TGFBR1 using anti-TGF Beta Receptor I/TGFBR1 antibody (A00832).

Electrophoresis was performed on a 5-20% SDS-PAGE gel at 70V (Stacking gel) / 90V (Resolving gel) for 2-3 hours. The sample well of each lane was loaded with 30 ug of sample under reducing conditions.

Lane 1: human HepG2 whole cell lysates.

After electrophoresis, proteins were transferred to a nitrocellulose membrane at 150 mA for 50-90 minutes. Blocked the membrane with 5% non-fat milk/TBS for 1.5 hour at RT. The membrane was incubated with rabbit anti-TGF Beta Receptor I/TGFBR1 antigen affinity purified polyclonal antibody (Catalog # A00832) at 0.5 ug/mL overnight at 4°C, then washed with TBS-0.1%Tween 3 times with 5 minutes each and probed with a goat anti-rabbit IgG-HRP secondary antibody at a dilution of 1:5000 for 1.5 hour at RT. The signal is developed using an Enhanced Chemiluminescent detection (ECL) kit (Catalog # EK1002) with Tanon 5200 system. A specific band was detected for TGF Beta Receptor I/TGFBR1 at approximately 56 kDa. The expected band size for TGF Beta Receptor I/TGFBR1 is at 56 kDa.

Submit a product review to Biocompare.com

Submit a review of this product to Biocompare.com to receive a \$20 Amazon.com giftcard! Your reviews help your fellow scientists make the right decisions. Thank you for your contribution.



Anti-TGF beta Receptor I/TGFBR1 Antibody