

Anti-VEGFR2 (Ab-1214) KDR Antibody

Catalog Number: A00901-4

About KDR

Receptor for VEGF or VEGFC. Has a tyrosine-protein kinase activity. The VEGF-kinase ligand/receptor signaling system plays a key role in vascular development and regulation of vascular permeability. In case of HIV-1 infection, the interaction with extracellular viral Tat protein seems to enhance angiogenesis in Kaposi's sarcoma lesions

Lamalice L, et al. (2004). Oncogene.23(2): 434-445.

Takahashi T, et al. (2001). EMBO J .20(11): 2768-2778.

Overview

Product Name	Anti-VEGFR2 (Ab-1214) KDR Antibody
Reactive Species	Human, Mouse, Rat
Description	Boster Bio Anti-VEGFR2 (Ab-1214) KDR Antibody (Catalog # A00901-4). Tested in WB, IHC, IF applications. This antibody reacts with Human, Mouse, Rat.
Application	IF, IHC, WB
Clonality	Polyclonal 5D7
Formulation	Supplied at 1.0mg/mL in phosphate buffered saline (without Mg ²⁺ and Ca ²⁺), pH 7.4, 150mM NaCl, 0.02% sodium azide and 50% glycerol.
Storage Instructions	Store at -20°C for one year. For short term storage and frequent use, store at 4°C for up to one month. Avoid repeated freeze-thaw cycles.
Host	Rabbit
Uniprot ID	P35968

Technical Details

Immunogen	Peptide sequence around aa.1212~1216 (F-H-Y-D-N) derived from Human VEGFR2.
Predicted Reactive Species	Equine
Cross Reactivity	No cross reactivity with other proteins.
Isotype	IgG
Form	Liquid
Concentration	1 mg/ml

Purification	Antibodies were produced by immunizing rabbits with synthetic peptide and KLH conjugates. Antibodies were purified by affinity-chromatography using epitope-specific peptide.
Suggested Dilutions	<p>Dilute the sample so that the expected range of concentrations fall within the detection range of this kit.</p> <p>If the expected range of concentration is unknown, a pilot test should be conducted to decide the optimal dilution ratio for your samples.</p> <p>Some PubMed article(s) citing the expression level of this target are as follows:</p> <p>Boster Bio's internal QC testing used:</p> <p>Predicted MW: 230kd</p> <p>Immunohistochemistry: 1:50~1:100</p> <p>Immunofluorescence: 1:100~1:200</p>

Anti-VEGFR2 (Ab-1214) KDR Antibody (A00901-4) Images

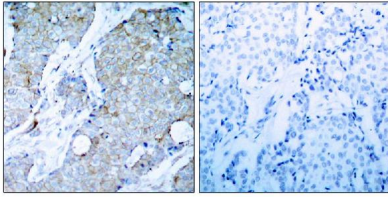
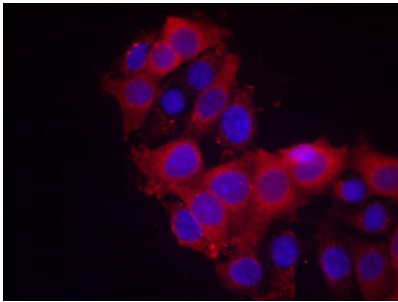


Figure 1. IHC analysis of KDR using anti-KDR antibody (A00901-4). KDR was detected in paraffin-embedded section. Heat mediated antigen retrieval was performed in citrate buffer (pH6, epitope retrieval solution) for 20 mins. The tissue section was blocked with 10% goat serum. The tissue section was then incubated with 1ug/ml rabbit anti-KDR Antibody (A00901-4) overnight at 4°C. Biotinylated goat anti Rabbit IgG antibody was used as secondary antibody and incubated for 30 minutes at 37°C. The tissue section was developed using Streptavidin-Biotin-Complex (SABC)(Catalog # SA1022) with DAB as the chromogen.



Immunofluorescence staining of methanol-fixed MCF cells using VEGFR2(Ab-1214) Antibody #A00901-4.

2 Publications Citing This Product

1. PubMed ID: 25009634, Zhu Y, Tuerxun A, Hui Y, Abliz P. Exp Ther Med. 2014 Aug;8(2):647-651. Epub 2014 Jun 12. Effects Of Propranolol And Isoproterenol On Infantile Hemangioma Endothelial Cells In Vitro.
2. PubMed ID: 25550894, Liu M, Yang S, Zhang D, Shui P, Song S, Yao J, Dai Y, Sun Q. Int J Clin Exp Med. 2014 Nov 15;7(11):3859-69. Ecollection 2014. Fructopyrano-(1

Visit bosterbio.com/anti-vegfr2-ab-1214-antibody-a00901-4-boster.html to see all 2 publications.

Submit a product review to Biocompare.com

Submit a review of this product to Biocompare.com to receive a \$20 Amazon.com giftcard! Your reviews help your fellow scientists make the right decisions. Thank you for your contribution.



Anti-VEGFR2 (Ab-1214) KDR Antibody