

## Anti-MLTK MAP3K20 Antibody

Catalog Number: A00902

### About MAP3K20

Stress-activated component of a protein kinase signal transduction cascade. Regulates the JNK and p38 pathways. Pro-apoptotic. Role in regulation of S and G2 cell cycle checkpoint by direct phosphorylation of CHEK2. Isoform 1, but not isoform 2, causes cell shrinkage and disruption of actin stress fibers. Isoform 1 may have role in neoplastic cell transformation and cancer development. Isoform 1, but not isoform 2, phosphorylates histone H3 at 'Ser-28'.

Gotoh I., J. Biol. Chem. 276:4276-4286(2001).

Bloem L.J., J. Mol. Cell. Cardiol. 33:1739-1750(2001).

Gross E.A., J. Biol. Chem. 277:13873-13882(2002).

### Overview

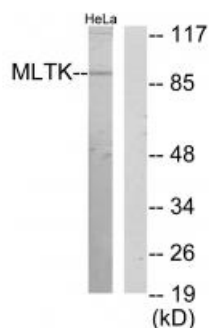
Product Name	Anti-MLTK MAP3K20 Antibody
Reactive Species	Human, Mouse
Description	Boster Bio Anti-MLTK MAP3K20 Antibody (Catalog # A00902). Tested in WB, IF applications. This antibody reacts with Human, Mouse.
Application	IF, WB
Clonality	Polyclonal
Formulation	Rabbit IgG in phosphate buffered saline (without Mg <sup>2+</sup> and Ca <sup>2+</sup> ), pH 7.4, 150mM NaCl, 0.02% sodium azide and 50% glycerol.
Storage Instructions	Store at -20°C for one year. For short term storage and frequent use, store at 4°C for up to one month. Avoid repeated freeze-thaw cycles.
Host	Rabbit
Uniprot ID	Q9NYL2

### Technical Details

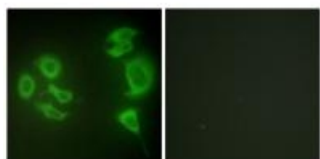
Immunogen	Synthesized peptide derived from C-terminal of human MLTK.
Predicted Reactive Species	Boar, Bovine, Canine, Golden Hamster
Cross Reactivity	No cross reactivity with other proteins.
Isotype	IgG
Form	Liquid

Concentration	1 mg/ml
Purification	The antibody was affinity-purified from rabbit antiserum by affinity-chromatography using epitope-specific immunogen.
Suggested Dilutions	<p>Dilute the sample so that the expected range of concentrations fall within the detection range of this kit.</p> <p>If the expected range of concentration is unknown, a pilot test should be conducted to decide the optimal dilution ratio for your samples.</p> <p>Some PubMed article(s) citing the expression level of this target are as follows:</p> <p>Boster Bio's internal QC testing used:</p> <p>Western blotting: 1:500~1:3000</p> <p>Immunofluorescence: 1:100~1:500</p>

## Anti-MLTK MAP3K20 Antibody (A00902) Images



Western blot analysis of extracts from HeLa cells, using MLTK antibody A00902.



Immunofluorescence analysis of HepG2 cells, using MLTK antibody A00902.

### Submit a product review to Biocompare.com

Submit a review of this product to Biocompare.com to receive a \$20 Amazon.com giftcard! Your reviews help your fellow scientists make the right decisions. Thank you for your contribution.



Anti-MLTK MAP3K20 Antibody