

## Anti-ATF3 Antibody

Catalog Number: A00904

### About ATF3

ATF3, or Activating Transcription Factor 3, is a member of mammalian activation TF/CREB protein family of transcription factors. ATF3 binds the cAMP response element (cre) (consensus: 5'-gtgacgt[ac][ag]-3'), a sequence present in many viral and cellular promoters. However, ATF3 represses rather than activates transcription from promoters with ATF sites stabilizing inhibitory co-factors at the promoter. Alternate splicing forms of ATF3, called ATF3 delta Zip, lack the leucine zipper domain and do not bind DNA. ATF3 delta Zip stimulates transcription, presumably by sequestering inhibitory co-factors away from the promoter. Human ATF3 (SwissProt 18847) is a 20575 Da protein composed of 181 amino acids.

### Overview

Product Name	Anti-ATF3 Antibody
Reactive Species	Human
Description	Boster Bio Anti-ATF3 Antibody (Catalog # A00904). Tested in ELISA, WB applications. This antibody reacts with Human.
Application	ELISA, WB
Clonality	Polyclonal
Formulation	0.02 M Potassium Phosphate, 0.15 M Sodium Chloride, pH 7.2, 0.01% (w/v) Sodium Azide
Storage Instructions	Store vial at -20°C prior to opening. Aliquot contents and freeze at -20°C or below for extended storage. Avoid cycles of freezing and thawing. Centrifuge product if not completely clear after standing at room temperature. This product is stable for several weeks at 4°C as an undiluted liquid. Dilute only prior to immediate use. Expiration date is one (1) year from date of opening. (Ship on dry ice.)
Host	Rabbit
Uniprot ID	P18847

### Technical Details

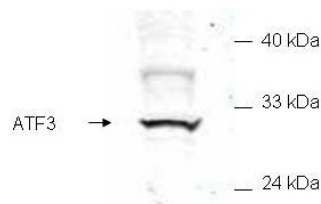
Immunogen	This antibody was prepared from whole rabbit serum produced by repeated immunizations with a synthetic peptide corresponding to an internal region of human ATF3.
Predicted Reactive Species	African Green Monkey, Chimpanzee, Zebrafish
Isotype	IgG
Form	Liquid (sterile filtered)
Concentration	1.0 mg/mL by UV absorbance at 280 nm
Purification	This affinity-purified antibody is directed against human ATF3 and is useful in determining its

presence in various assays including ELISA and western blotting. This polyclonal antibody recognizes over-expressed ATF3 protein found in various expression systems. Reactivity is observed against human ATF3. Cross-reactivity with ATF3 from other mammalian sources has not been tested.

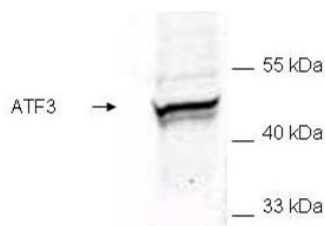
**Suggested Dilutions**

Dilute the sample so that the expected range of concentrations fall within the detection range of this kit.  
If the expected range of concentration is unknown, a pilot test should be conducted to decide the optimal dilution ratio for your samples.  
Some PubMed article(s) citing the expression level of this target are as follows:  
Boster Bio's internal QC testing used:  
ELISA: 1:5,000 - 1:20,000  
WB: 1:200 - 1:2000

## Anti-ATF3 Antibody (A00904) Images



Western blot analysis of ATF3 expression in mammalian whole cell extract transfected with HA epitope tagged human ATF3 (lane 1). ATF3 at 31KD was detected using rabbit anti-ATF3 Antigen Affinity purified polyclonal antibody (Catalog #A00904) at 1:200. The blot was developed using chemiluminescence (ECL) method (Catalog # EK1002).



Western blot analysis of ATF3 expression in E.coli whole cell extract transfected with GST epitope tagged human ATF3 (lane 1). ATF3 at 48KD was detected using rabbit anti-ATF3 Antigen Affinity purified polyclonal antibody (Catalog #A00904) at 1:200. The blot was developed using chemiluminescence (ECL) method (Catalog # EK1002).

## Submit a product review to Biocompare.com

Submit a review of this product to Biocompare.com to receive a \$20 Amazon.com giftcard! Your reviews help your fellow scientists make the right decisions. Thank you for your contribution.



Anti-ATF3 Antibody