

Anti-LATS1/2 Antibody

Catalog Number: A01051

About LATS1

Negative regulator of YAP1 in the Hippo signaling pathway that plays a pivotal role in organ size control and tumor suppression by restricting proliferation and promoting apoptosis. The core of this pathway is composed of a kinase cascade wherein STK3/MST2 and STK4/MST1, in complex with its regulatory protein SAV1, phosphorylates and activates LATS1/2 in complex with its regulatory protein MOB1, which in turn phosphorylates and inactivates YAP1 oncoprotein and WWTR1/TAZ. Phosphorylation of YAP1 by LATS1 inhibits its translocation into the nucleus to regulate cellular genes important for cell proliferation, cell death, and cell migration. Acts as a tumor suppressor which plays a critical role in maintenance of ploidy through its actions in both mitotic progression and the G1 tetraploidy checkpoint. Negatively regulates G2/M transition by down-regulating CDK1 kinase activity. Involved in the control of p53 expression. Affects cytokinesis by regulating actin polymerization through negative modulation of LIMK1. May also play a role in endocrine function.

Tao W., Nat. Genet. 21:177-181(1999).

Nishiyama Y., FEBS Lett. 459:159-165(1999).

The MGC Project Team, Genome Res. 14:2121-2127(2004).

Overview

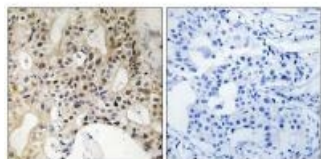
Product Name	Anti-LATS1/2 Antibody
Reactive Species	Human
Description	Boster Bio Anti-LATS1/2 Antibody (Catalog # A01051). Tested in IHC, WB applications. This antibody reacts with Human.
Application	IHC, WB
Clonality	Polyclonal
Formulation	Rabbit IgG in phosphate buffered saline (without Mg ²⁺ and Ca ²⁺), pH 7.4, 150mM NaCl, 0.02% sodium azide and 50% glycerol.
Storage Instructions	Store at -20°C for one year. For short term storage and frequent use, store at 4°C for up to one month. Avoid repeated freeze-thaw cycles.
Host	Rabbit
Uniprot ID	O95835

Technical Details

Immunogen	Synthesized peptide derived from Internal of human LATS1/2.
Predicted Reactive Species	Boar, Bovine, Canine, Golden Hamster
Cross Reactivity	No cross reactivity with other proteins.

Isotype	IgG
Form	Liquid
Concentration	1 mg/ml
Purification	The antibody was affinity-purified from rabbit antiserum by affinity-chromatography using epitope-specific immunogen.
Suggested Dilutions	<p>Dilute the sample so that the expected range of concentrations fall within the detection range of this kit.</p> <p>If the expected range of concentration is unknown, a pilot test should be conducted to decide the optimal dilution ratio for your samples.</p> <p>Some PubMed article(s) citing the expression level of this target are as follows:</p> <p>Boster Bio's internal QC testing used:</p> <p>Immunohistochemistry: 1:50~1:100</p>

Anti-LATS1/2 Antibody (A01051) Images



Immunohistochemistry analysis of paraffin-embedded human breast carcinoma tissue using LATS1/2 antibody A01051.

Submit a product review to Biocompare.com

Submit a review of this product to Biocompare.com to receive a \$20 Amazon.com giftcard! Your reviews help your fellow scientists make the right decisions. Thank you for your contribution.



Anti-LATS1/2 Antibody