

Anti-Pyk2(Ab-402) PTK2B Antibody

Catalog Number: A01066

About PTK2B

Involved in calcium induced regulation of ion channel and activation of the map kinase signaling pathway. May represent an important signaling intermediate between neuropeptide activated receptors or neurotransmitters that increase calcium flux and the downstream signals that regulate neuronal activity. Interacts with the SH2 domain of Grb2. May phosphorylate the voltage-gated potassium channel protein Kv1.2. Its activation is highly correlated with the stimulation of c-Jun N-terminal kinase activity. Involved in osmotic stress-dependent SNCA 'Tyr-125' phosphorylation.

Gluck SL, et al. (2004) J Clin Invest; 114(12): 1696-1699

Benzing T, et al. (2001) Proc Natl Acad Sci U S A; 98(17): 9784-9789

Tian D, et al. (2002) Mol Cell Biol; 22(8): 2650-2662

Lu Z, et al. (2001) Mol Cell Biol; 21(12): 4016-4031

Krishnan HH, et al. (2006) J Virol; 80(3): 1167-1180

Overview

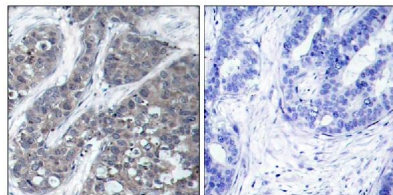
Product Name	Anti-Pyk2(Ab-402) PTK2B Antibody
Reactive Species	Human, Mouse, Rat
Description	Boster Bio Anti-Pyk2(Ab-402) PTK2B Antibody (Catalog # A01066). Tested in WB, IHC, IF applications. This antibody reacts with Human, Mouse, Rat.
Application	IF, IHC, WB
Clonality	Polyclonal
Formulation	Supplied at 1.0mg/mL in phosphate buffered saline (without Mg ²⁺ and Ca ²⁺), pH 7.4, 150mM NaCl, 0.02% sodium azide and 50% glycerol.
Storage Instructions	Store at -20°C for one year. For short term storage and frequent use, store at 4°C for up to one month. Avoid repeated freeze-thaw cycles.
Host	Rabbit
Uniprot ID	Q14289

Technical Details

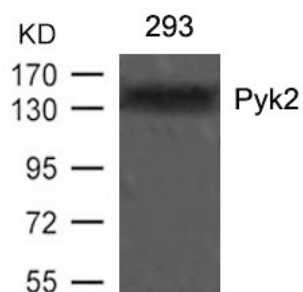
Immunogen	Peptide sequence around aa.400~404 (D-I-Y-A-E) derived from Human Pyk2.
Predicted Reactive Species	Boar, Bovine, Canine, Golden Hamster
Cross Reactivity	No cross reactivity with other proteins.
Isotype	IgG

Form	Liquid
Concentration	1 mg/ml
Purification	Antibodies were produced by immunizing rabbits with synthetic peptide and KLH conjugates. Antibodies were purified by affinity-chromatography using epitope-specific peptide.
Suggested Dilutions	<p>Dilute the sample so that the expected range of concentrations fall within the detection range of this kit.</p> <p>If the expected range of concentration is unknown, a pilot test should be conducted to decide the optimal dilution ratio for your samples.</p> <p>Some PubMed article(s) citing the expression level of this target are as follows:</p> <p>Boster Bio's internal QC testing used:</p> <p>Predicted MW: 140kd</p> <p>Western blotting: 1:500~1:1000</p> <p>Immunohistochemistry: 1:50~1:100</p> <p>Immunofluorescence: 1:100~1:200</p>

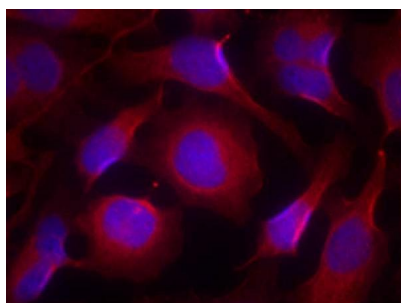
Anti-Pyk2(Ab-402) PTK2B Antibody (A01066) Images



Immunohistochemical analysis of paraffin-embedded human breast carcinoma tissue using Pyk2(Ab-402) antibody A01066(left) or the same antibody preincubated with blocking peptide(right).



Western blot analysis of extracts from 293 cells using Pyk2(Ab-402) antibody A01066.



Immunofluorescence staining of methanol-fixed HeLa cells using Pyk2(Ab-402) antibody A01066.

Submit a product review to Biocompare.com

Submit a review of this product to Biocompare.com to receive a \$20 Amazon.com giftcard! Your reviews help your fellow scientists make the right decisions. Thank you for your contribution.



Anti-Pyk2(Ab-402) PTK2B Antibody