

Anti-IL-1 Alpha Antibody

Catalog Number: A01144

About IL1A

Interleukin 1 alpha is produced by activated macrophages. Anti-IL-1 alpha antibody is ideal for investigators involved in Immunology research.

Overview

Product Name	Anti-IL-1 Alpha Antibody
Reactive Species	Human
Description	Boster Bio Anti-IL-1 Alpha Antibody (Catalog # A01144). Tested in WB applications. This antibody reacts with Human.
Application	WB
Clonality	Polyclonal QCRL-1
Formulation	0.02 M Potassium Phosphate, 0.15 M Sodium Chloride, pH 7.2, 0.01% (w/v) Sodium Azide
Storage Instructions	Store vial at -20°C prior to opening. Aliquot contents and freeze at -20°C or below for extended storage. Avoid cycles of freezing and thawing. Centrifuge product if not completely clear after standing at room temperature. This product is stable for several weeks at 4°C as an undiluted liquid. Dilute only prior to immediate use. Expiration date is one (1) year from date of opening. (Ship on dry ice.)
Host	Rabbit
Uniprot ID	P01583

Technical Details

Immunogen	The whole rabbit serum used to produce this IgG fraction antibody was prepared by repeated immunizations with recombinant human IL-1a produced in E.coli. The MW of the recombinant IL-1a was 17,000. This is the cleavage site generated by the IL-1b converting enzyme (ICE, capase-1).
Predicted Reactive Species	Bovine, Goat, Guinea Pig, Hamster, Monkey, Sheep
Cross Reactivity	Detects ~20kDa. Does not cross-react with alphaB-crystallin, betaL-crystallin, ̢H- crystallin, gamma-crystallin, HSP25, HSP27 or HSP47 proteins.
Isotype	IgG
Form	Liquid (sterile filtered)
Concentration	1.0 mg/mL by UV absorbance at 280 nm
Purification	This antibody is primarily directed against the 17,000 MW human IL-1a and is useful in determining its presence in various assays. In general, this antibody also detects primate IL-1a in the same

formats using similar dilutions. The antiserum does not recognize human IL-1b or Mouse or Rabbit IL-1a. In ELISA formats and other immunoreactive assays, this antibody will recognize both the mature 17,000 MW IL-1a as well as the 31,000 MW IL-1a precursor in either non-denatured (native) or denatured samples. Unlike the IL-1b precursor, the native precursor of IL-1a is recognized by the antibody produced to the 17,000 MW form. The 31,000 precursor of IL-1a is biologically active and is found primarily intracellularly. The precursor of IL-1a, unlike that of IL-1b, is biologically active when applied to cells and is thought to have a role as a functional molecule intracellularly and can be found constitutively expressed in various cell. This antibody is also useful for neutralization of human and primate IL-1a activity in bioassays. It does not neutralize the biological activity IL-1b. It does not neutralize the biological activity of mouse, rat or rabbit IL-1a. It will neutralize primate IL-1a. For neutralization, it is recommended to incubate the sample with a 1:100 dilution of the antibody for at least 4 hours before being tested. A control of similarly diluted normal rabbit IgG is recommended. This antibody can be used for FACS analysis. Caution should be exhibited as the F(c) domain of the rabbit IgG molecule may interact with cells non-specifically.

Suggested Dilutions

Dilute the sample so that the expected range of concentrations fall within the detection range of this kit.
If the expected range of concentration is unknown, a pilot test should be conducted to decide the optimal dilution ratio for your samples.
Some PubMed article(s) citing the expression level of this target are as follows:
Boster Bio's internal QC testing used:
ELISA: 1:1,000 - 1:5,000
Flow Cytometry: User optimized
IHC: 1:100 to 1:200
WB: 1:500 - 1:2,000
Neutralization: User optimized

Anti-IL-1 Alpha Antibody (A01144) Images

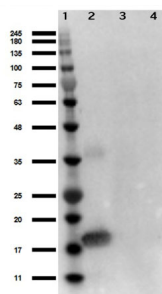


Figure 1. Western blot analysis of IL1A using anti-IL1A antibody (A01144).

Electrophoresis was performed on a 5-20% SDS-PAGE gel at 70V (Stacking gel) / 90V (Resolving gel) for 2-3 hours. The sample well of each lane was loaded with 50ug of sample under reducing conditions.

After Electrophoresis, proteins were transferred to a Nitrocellulose membrane at 150mA for 50-90 minutes. Blocked the membrane with 5% Non-fat Milk/ TBS for 1.5 hour at RT. The membrane was incubated with rabbit anti-IL1A antigen affinity purified polyclonal antibody (Catalog # A01144) at 0.5 ug/mL overnight at 4°C, then washed with TBS-0.1%Tween 3 times with 5 minutes each and probed with a goat anti-Rabbit IgG-HRP secondary antibody at a dilution of 1:10000 for 1.5 hour at RT. The signal is developed using an Enhanced Chemiluminescent detection (ECL) kit (Catalog # SA1022) with Tanon 5200 system. A specific band was detected for IL1A.

Submit a product review to Biocompare.com

Submit a review of this product to Biocompare.com to receive a \$20 Amazon.com giftcard! Your reviews help your fellow scientists make the right decisions. Thank you for your contribution.



Anti-IL-1 Alpha Antibody