

Anti-AP-2 TFAP2A Antibody

Catalog Number: A01167-1

About TFAP2A

Sequence-specific DNA-binding protein that interacts with inducible viral and cellular enhancer elements to regulate transcription of selected genes. AP-2 factors bind to the consensus sequence 5'-GCCNNNGGC-3' and activate genes involved in a large spectrum of important biological functions including proper eye, face, body wall, limb and neural tube development. They also suppress a number of genes including MCAM/MUC18, C/EBP alpha and MYC. AP-2-alpha is the only AP-2 protein required for early morphogenesis of the lens vesicle. Together with the CITED2 coactivator, stimulates the PITX2 P1 promoter transcription activation. Associates with chromatin to the PITX2 P1 promoter region.

ShunJiang Yu, J. Biol. Chem., May 2003; 278: 19597 - 19602.

TT Chen, Mol. Cell. Biol., Jun 1997; 17: 3056 - 3064.

Oscar B. Goodman, J. Biol. Chem., Oct 1995; 270: 23768.

Didier Jean, J. Biol. Chem., Jun 1998; 273: 16501

Overview

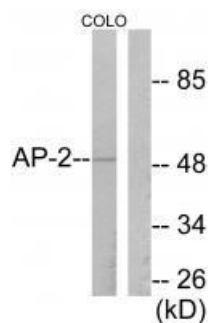
Product Name	Anti-AP-2 TFAP2A Antibody
Reactive Species	Human, Mouse, Rat
Description	Boster Bio Anti-AP-2 TFAP2A Antibody (Catalog # A01167-1). Tested in WB, IHC applications. This antibody reacts with Human, Mouse, Rat.
Application	IHC, WB
Clonality	Polyclonal
Formulation	Rabbit IgG in phosphate buffered saline (without Mg ²⁺ and Ca ²⁺), pH 7.4, 150mM NaCl, 0.02% sodium azide and 50% glycerol.
Storage Instructions	Store at -20°C for one year. For short term storage and frequent use, store at 4°C for up to one month. Avoid repeated freeze-thaw cycles.
Host	Rabbit
Uniprot ID	P05549

Technical Details

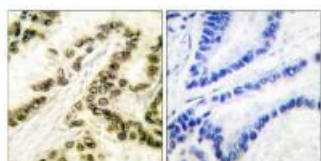
Immunogen	Synthesized peptide derived from human AP-2.
Predicted Reactive Species	Boar, Bovine, Canine, Golden Hamster
Cross Reactivity	No cross reactivity with other proteins.
Isotype	IgG

Form	Liquid
Concentration	1 mg/ml
Purification	The antibody was affinity-purified from rabbit antiserum by affinity-chromatography using epitope-specific immunogen.
Suggested Dilutions	<p>Dilute the sample so that the expected range of concentrations fall within the detection range of this kit.</p> <p>If the expected range of concentration is unknown, a pilot test should be conducted to decide the optimal dilution ratio for your samples.</p> <p>Some PubMed article(s) citing the expression level of this target are as follows:</p> <p>Boster Bio's internal QC testing used:</p> <p>Western blotting: 1:500~1:3000</p> <p>Immunohistochemistry: 1:50~1:100</p>

Anti-AP-2 TFAP2A Antibody (A01167-1) Images



Western blot analysis of extracts from COLO205 cells, using AP-2 antibody A01167-1.



Immunohistochemical analysis of paraffin-embedded human breast carcinoma tissue using AP-2 antibody A01167-1.

Submit a product review to Biocompare.com

Submit a review of this product to Biocompare.com to receive a \$20 Amazon.com giftcard! Your reviews help your fellow scientists make the right decisions. Thank you for your contribution.



Anti-AP-2 TFAP2A Antibody