

Anti-Gli-3 Antibody

Catalog Number: A01171

About GLI3

Gli-3 (also known as Zinc Finger Protein Gli-3 or GLI-Kruppel family member GLI-3) belongs to the GLI C2H2-type zinc-finger protein family and contains 5 C2H2-type zinc fingers. Gli-3 is very important for normal limb and brain development and is implicated in the transduction of Shh signal. Gli-3 is a nuclear protein expressed in a wide variety of normal adult tissues, including lung, colon, spleen, placenta, testis, and myometrium. Defects in Gli-3 are the cause of Greig cephalo-poly-syndactyly syndrome (GCPS); an autosomal dominant disorder-affecting limb and cranio-facial development. Two isoforms of human Gli-3 have been reported. One is the full-length protein at ~170-190kDa and the other is a truncated isoform at ~80kDa.

Overview

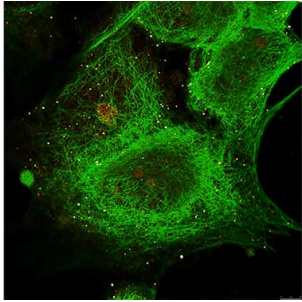
Product Name	Anti-Gli-3 Antibody
Reactive Species	Human
Description	Boster Bio Anti-Gli-3 Antibody (Catalog # A01171). Tested in ELISA, IF, IHC, WB applications. This antibody reacts with Human.
Application	ELISA, IF, IHC, WB
Clonality	Polyclonal
Formulation	0.02 M Potassium Phosphate, 0.15 M Sodium Chloride, pH 7.2, 0.01% (w/v) Sodium Azide
Storage Instructions	Store vial at -20°C prior to opening. Aliquot contents and freeze at -20°C or below for extended storage. Avoid cycles of freezing and thawing. Centrifuge product if not completely clear after standing at room temperature. This product is stable for several weeks at 4°C as an undiluted liquid. Dilute only prior to immediate use. Expiration date is one (1) year from date of opening. (Ship on dry ice.)
Host	Rabbit
Uniprot ID	P10071

Technical Details

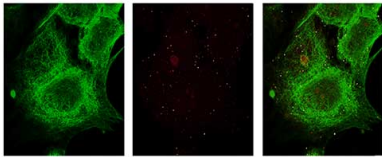
Immunogen	This affinity purified antibody was produced from monospecific rabbit serum by repeated immunizations with a synthetic peptide corresponding to an internal region near amino acids 30-60 of human Gli-3 protein.
Predicted Reactive Species	African Green Monkey, Chimpanzee, Zebrafish
Isotype	IgG
Form	Liquid (sterile filtered)

Concentration	1.0 mg/mL by UV absorbance at 280 nm
Purification	This affinity-purified antibody is directed against human Gli-3 protein. The product was affinity purified from monospecific antiserum by immunoaffinity purification. A BLAST analysis was used to suggest cross-reactivity with Gli-3 from human, chimpanzee, squirrel monkey, <i>Xenopus laevis</i> , chicken, dog and quail based on 100% sequence homology with the immunogen. Reactivity is also expected against homologues from mouse (94%) and rat (88%) based on partial homology. Reactivity with Gli-3 from other sources is not known.
Suggested Dilutions	<p>Dilute the sample so that the expected range of concentrations fall within the detection range of this kit.</p> <p>If the expected range of concentration is unknown, a pilot test should be conducted to decide the optimal dilution ratio for your samples.</p> <p>Some PubMed article(s) citing the expression level of this target are as follows:</p> <p>Boster Bio's internal QC testing used:</p> <p>ELISA: 1:6,000 - 1:30,000</p> <p>IHC: 0.5 mg/ml - 5 µg/ml</p> <p>IF Microscopy: User optimized</p> <p>WB: 1:500 - 1:2,000</p>

Anti-Gli-3 Antibody (A01171) Images



Immunofluorescence Microscopy of Rabbit anti-Gli-3 antibody. Tissue: MCF-7 cell. Antigen retrieval: not required. Primary antibody: Gli-3 antibody and Anti-alpha-Tubulin at 5



Immunofluorescence Microscopy of Rabbit anti-Gli-3 antibody. Tissue: MCF-7 cell. Antigen retrieval: not required. Primary antibody: Gli-3 antibody and Anti-alpha-Tubulin at 5

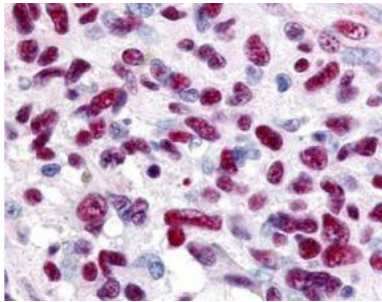


Figure 1. IHC analysis of GLI3 using anti-GLI3 antibody (A01171).
GLI3 was detected in paraffin-embedded section. Heat mediated antigen retrieval was performed in citrate buffer (pH6, epitope retrieval solution) for 20 mins. The tissue section was blocked with 10% goat serum. The tissue section was then incubated with 1ug/ml rabbit anti-GLI3 Antibody (A01171) overnight at 4°C. Biotinylated goat anti Rabbit IgG antibody was used as secondary antibody and incubated for 30 minutes at 37°C. The tissue section was developed using Streptavidin-Biotin-Complex (SABC) (Catalog # SA1022) with DAB as the chromogen.

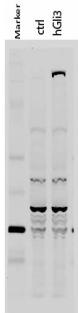


Figure 2. Western blot analysis of GLI3 using anti-GLI3 antibody (A01171).
Electrophoresis was performed on a 5-20% SDS-PAGE gel at 70V (Stacking gel) / 90V (Resolving gel) for 2-3 hours. The sample well of each lane was loaded with 50ug of sample under reducing conditions.
After Electrophoresis, proteins were transferred to a Nitrocellulose membrane at 150mA for 50-90 minutes. Blocked the membrane with 5% Non-fat Milk/ TBS for 1.5 hour at RT. The membrane was incubated with rabbit anti-GLI3 antigen affinity purified polyclonal antibody (Catalog # A01171) at 0.5 ug/mL overnight at 4°C, then washed with TBS-0.1% Tween 3 times with 5 minutes each and probed with a goat anti-Rabbit IgG-HRP secondary antibody at a dilution of 1:10000 for 1.5 hour at RT. The signal is developed using an Enhanced Chemiluminescent detection (ECL) kit (Catalog # SA1022) with Tanon 5200 system. A specific band was detected for GLI3.

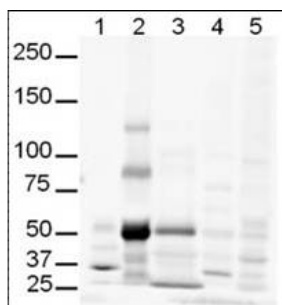


Figure 3. Western blot analysis of GLI3 using anti-GLI3 antibody (A01171).

Electrophoresis was performed on a 5-20% SDS-PAGE gel at 70V (Stacking gel) / 90V (Resolving gel) for 2-3 hours. The sample well of each lane was loaded with 50ug of sample under reducing conditions.

After Electrophoresis, proteins were transferred to a Nitrocellulose membrane at 150mA for 50-90 minutes. Blocked the membrane with 5% Non-fat Milk/ TBS for 1.5 hour at RT. The membrane was incubated with rabbit anti-GLI3 antigen affinity purified polyclonal antibody (Catalog # A01171) at 0.5 ug/mL overnight at 4°C, then washed with TBS-0.1%Tween 3 times with 5 minutes each and probed with a goat anti-Rabbit IgG-HRP secondary antibody at a dilution of 1:10000 for 1.5 hour at RT. The signal is developed using an Enhanced Chemiluminescent detection (ECL) kit (Catalog # SA1022) with Tanon 5200 system. A specific band was detected for GLI3.

Submit a product review to Biocompare.com

Submit a review of this product to Biocompare.com to receive a \$20 Amazon.com giftcard! Your reviews help your fellow scientists make the right decisions. Thank you for your contribution.



Anti-Gli-3 Antibody