

## Anti-XPA Antibody

Catalog Number: A01182

### About XPA

Involved in DNA excision repair. Initiates repair by binding to damaged sites with various affinities, depending on the photoproduct and the transcriptional state of the region. Required for UV-induced CHEK1 phosphorylation and the recruitment of CEP164 to cyclobutane pyrimidine dimmers (CPD), sites of DNA damage after UV irradiation.

Gary W. Daughdrill, Nucleic Acids Res., Jul 2003; 31: 4176 - 4183.

Esther M. Hoogervorst, Carcinogenesis, Mar 2003; 24: 613 - 619.

Karen M. Vasquez, PNAS, Apr 2002; 99: 5848.

### Overview

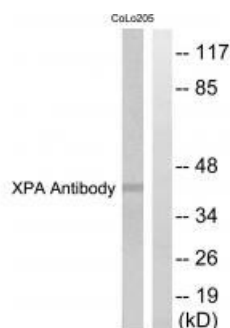
Product Name	Anti-XPA Antibody
Reactive Species	Human
Description	Boster Bio Anti-XPA Antibody (Catalog # A01182). Tested in WB, IHC applications. This antibody reacts with Human.
Application	IHC, WB
Clonality	Polyclonal
Formulation	Rabbit IgG in phosphate buffered saline (without Mg <sup>2+</sup> and Ca <sup>2+</sup> ), pH 7.4, 150mM NaCl, 0.02% sodium azide and 50% glycerol.
Storage Instructions	Store at -20°C for one year. For short term storage and frequent use, store at 4°C for up to one month. Avoid repeated freeze-thaw cycles.
Host	Rabbit
Uniprot ID	P23025

### Technical Details

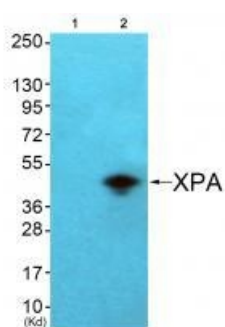
Immunogen	Synthesized peptide derived from Internal of human XPA.
Predicted Reactive Species	Boar, Bovine, Canine, Golden Hamster
Cross Reactivity	No cross reactivity with other proteins.
Isotype	IgG
Form	Liquid
Concentration	1 mg/ml

Purification	The antibody was affinity-purified from rabbit antiserum by affinity-chromatography using epitope-specific immunogen.
Suggested Dilutions	<p>Dilute the sample so that the expected range of concentrations fall within the detection range of this kit.</p> <p>If the expected range of concentration is unknown, a pilot test should be conducted to decide the optimal dilution ratio for your samples.</p> <p>Some PubMed article(s) citing the expression level of this target are as follows:</p> <p>Boster Bio's internal QC testing used:</p> <p>Western blotting: 1:500~1:3000</p> <p>Immunohistochemistry: 1:50~1:100</p>

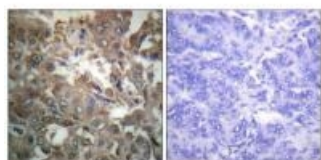
## Anti-XPA Antibody (A01182) Images



Western blot analysis of extracts from COLO205 cells, using XPA antibody A01182.



Western blot analysis of extracts from COS7 cells (Lane 2), using XPA antibody A01182. The lane on the left is treated with synthesized peptide.



Immunohistochemistry analysis of paraffin-embedded human breast carcinoma tissue using XPA antibody A01182.

## Submit a product review to Biocompare.com

Submit a review of this product to Biocompare.com to receive a \$20 Amazon.com giftcard! Your reviews help your fellow scientists make the right decisions. Thank you for your contribution.



Anti-XPA Antibody