

Anti-NFkB-p100 (Ab-866) NFkB2 Antibody

Catalog Number: A01228-1

About NFkB2

NFkB has been detected in numerous cell types that express cytokines, chemokines, growth factors, cell adhesion molecules, and some acute phase proteins in health and in various disease states. NFkB is activated by a wide variety of stimuli such as cytokines, oxidant-free radicals, inhaled particles, ultraviolet irradiation, and bacterial or viral products. Inappropriate activation of NF-kappa-B has been linked to inflammatory events associated with autoimmune arthritis, asthma, septic shock, lung fibrosis, glomerulonephritis, atherosclerosis, and AIDS. In contrast, complete and persistent inhibition of NF-kappa-B has been linked directly to apoptosis, inappropriate immune cell development, and delayed cell growth.

Qu Z, et al. (2004) J Biol Chem. 279(43): 44563-44572.

Xiao G, et al. (2001) Mol Cell. 7(2): 401-409.

Baeuerle P A, et al. (1994) Annu Rev Immunol. 12:141-179.

Baeuerle P A, et al. (1996) Cell 87:13-20.

Haskill S, et al. (1991) Cell 65:1281-1289.

Overview

Product Name	Anti-NFkB-p100 (Ab-866) NFkB2 Antibody
Reactive Species	Human, Mouse, Rat
Description	Boster Bio Anti-NFkB-p100 (Ab-866) NFkB2 Antibody (Catalog # A01228-1). Tested in WB, IHC, IF applications. This antibody reacts with Human, Mouse, Rat.
Application	IF, IHC, WB
Clonality	Polyclonal 2D3
Formulation	Supplied at 1.0mg/mL in phosphate buffered saline (without Mg ²⁺ and Ca ²⁺), pH 7.4, 150mM NaCl, 0.02% sodium azide and 50% glycerol.
Storage Instructions	Store at -20°C for one year. For short term storage and frequent use, store at 4°C for up to one month. Avoid repeated freeze-thaw cycles.
Host	Rabbit
Uniprot ID	Q00653

Technical Details

Immunogen	Peptide sequence around aa.864~868 (E-D-S-A-Y) derived from Human NFkB-p100.
Predicted Reactive Species	Bovine, Canine
Cross Reactivity	No cross reactivity with other proteins.

Isotype	IgG
Form	Liquid
Concentration	1 mg/ml
Purification	Antibodies were produced by immunizing rabbits with synthetic peptide and KLH conjugates. Antibodies were purified by affinity-chromatography using epitope-specific peptide.
Suggested Dilutions	<p>Dilute the sample so that the expected range of concentrations fall within the detection range of this kit.</p> <p>If the expected range of concentration is unknown, a pilot test should be conducted to decide the optimal dilution ratio for your samples.</p> <p>Some PubMed article(s) citing the expression level of this target are as follows:</p> <p>Boster Bio's internal QC testing used:</p> <p>Predicted MW: 120 kd</p> <p>Western blotting: 1:500~1:1000</p> <p>Immunohistochemistry: 1:50~1:100</p> <p>Immunofluorescence: 1:100~1:200</p>

Anti-NFkB-p100 (Ab-866) NFKB2 Antibody (A01228-1) Images

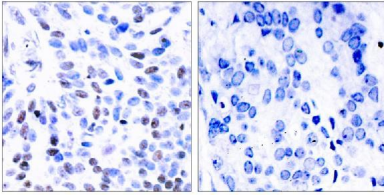
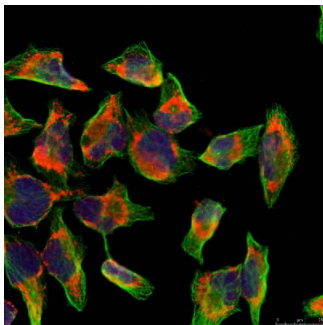


Figure 1. IHC analysis of NFKB2 using anti-NFKB2 antibody (A01228-1). NFKB2 was detected in paraffin-embedded section. Heat mediated antigen retrieval was performed in citrate buffer (pH6, epitope retrieval solution) for 20 mins. The tissue section was blocked with 10% goat serum. The tissue section was then incubated with 1ug/ml rabbit anti-NFKB2 Antibody (A01228-1) overnight at 4°C. Biotinylated goat anti Rabbit IgG antibody was used as secondary antibody and incubated for 30 minutes at 37°C. The tissue section was developed using Streptavidin-Biotin-Complex (SABC)(Catalog # SA1022) with DAB as the chromogen.



Immunofluorescence staining of methanol-fixed HeLa cells using NFkB-p100(Ab-866) Antibody #A01228-1.

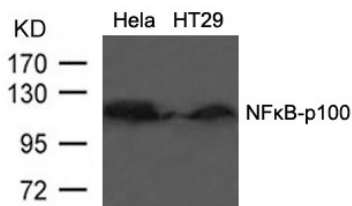


Figure 3. Western blot analysis of NFKB2 using anti-NFKB2 antibody (A01228-1). Electrophoresis was performed on a 5-20% SDS-PAGE gel at 70V (Stacking gel) / 90V (Resolving gel) for 2-3 hours. The sample well of each lane was loaded with 50ug of sample under reducing conditions. After Electrophoresis, proteins were transferred to a Nitrocellulose membrane at 150mA for 50-90 minutes. Blocked the membrane with 5% Non-fat Milk/ TBS for 1.5 hour at RT. The membrane was incubated with rabbit anti-NFKB2 antigen affinity purified polyclonal antibody (Catalog # A01228-1) at 0.5 ug/mL overnight at 4°C, then washed with TBS-0.1%Tween 3 times with 5 minutes each and probed with a goat anti-Rabbit IgG-HRP secondary antibody at a dilution of 1:10000 for 1.5 hour at RT. The signal is developed using an Enhanced Chemiluminescent detection (ECL) kit (Catalog # SA1022) with Tanon 5200 system. A specific band was detected for NFKB2.

19 Publications Citing This Product

1. PubMed ID: 27413418, Hydrogen Sulfide Mitigates Kidney Injury in High Fat Diet-Induced Obese Mice
2. PubMed ID: 25571852, Liu Mw, Su Mx, Zhang W, Wang Yh, Qin Lf, Liu X, Tian MI, Qian Cy. Mol Med Rep. 2015 May;11(5):3308-16. Doi: 10.3892/Mmr.2015.3146. Epub 2015 Jan 7. Effect Of Melilotus Suaveolens Extract On Pulmonary Microvascular Permeability By Downregulating Va...

3. PubMed ID: 26239046, Down-regulation of HMGB1 expression by shRNA constructs inhibits the bioactivity of urothelial carcinoma cell lines via the NF- κ B pathway

Visit bosterbio.com/anti-nfkb-p100-ab-866-antibody-a01228-1-boster.html to see all 19 publications.

Submit a product review to Biocompare.com

Submit a review of this product to Biocompare.com to receive a \$20 Amazon.com giftcard! Your reviews help your fellow scientists make the right decisions. Thank you for your contribution.



Anti-NF κ B-p100 (Ab-866) NF κ B2 Antibody