

Anti-beta Actin ACTB Antibody

Catalog Number: A01263

About ACTB

In vertebrates 3 main groups of actin isoforms, alpha, beta and gamma have been identified. Alpha actins are found in muscle tissues and are a major constituent of the contractile apparatus. Beta and gamma actins coexist in most cell types as components of the cyto-skeleton and as mediators of internal cell motility. Beta actins are highly conserved proteins that are involved in cell motility, structure and integrity. Beta actins are cytoplasmic proteins. Anti-Actin is a loading control antibody and is critical for the correct interpretation of your western blot. Beta-Actin Loading Control Antibody is used to normalize the levels of protein detected by confirming that protein loading is uniform across the gel.

Overview

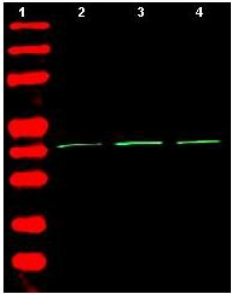
Product Name	Anti-beta Actin ACTB Antibody
Reactive Species	Human, Mouse, Leopard frog
Description	Boster Bio Anti-beta Actin ACTB Antibody (Catalog # A01263). Tested in ELISA, IF, WB applications. This antibody reacts with Human, Mouse, Leopard Frog.
Application	ELISA, IF, WB
Clonality	Polyclonal
Formulation	0.02 M Potassium Phosphate, 0.15 M Sodium Chloride, pH 7.2, 0.01% (w/v) Sodium Azide
Storage Instructions	Store beta-Actin Loading Control Antibody at -20°C prior to opening. Aliquot contents and freeze at -20°C or below for extended storage. Avoid cycles of freezing and thawing. Centrifuge product if not completely clear after standing at room temperature. This product is stable for several weeks at 4°C as an undiluted liquid. Dilute only prior to immediate use. Expiration date is one (1) year from date of opening. (Ship on dry ice.)
Host	Rabbit
Uniprot ID	P60709

Technical Details

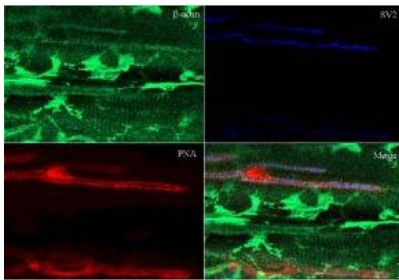
Immunogen	beta-Actin Loading Control Antibody was prepared from whole rabbit serum produced by repeated immunizations with a synthetic peptide corresponding to C-Terminal region near amino acids 350-375 of Human beta Actin.
Predicted Reactive Species	Bovine, Goat, Guinea Pig, Hamster, Monkey, Sheep
Cross Reactivity	No cross reactivity with other proteins.
Isotype	IgG
Form	Liquid (sterile filtered)

Concentration	1.0 mg/mL by UV absorbance at 280 nm
Purification	Anti-beta-Actin Loading Control Antibody reacts with Human, Rat, Monkey and Mouse. beta-Actin Loading Control Antibody is expected to cross-react with a wide range of species due to sequence homology. Anti-Beta Actin is affinity-purified antibody is directed against human beta Actin protein. A BLAST analysis was used to suggest that this antibody would react with beta Actin from a wide range of organisms, including most vertebrates and some yeast. Broad reactivity makes this antibody an excellent loading control.
Suggested Dilutions	<p>Dilute the sample so that the expected range of concentrations fall within the detection range of this kit.</p> <p>If the expected range of concentration is unknown, a pilot test should be conducted to decide the optimal dilution ratio for your samples.</p> <p>Some PubMed article(s) citing the expression level of this target are as follows:</p> <p>Boster Bio's internal QC testing used:</p> <p>ELISA: 1:10,000 - 1:40,000</p> <p>IF Microscopy: 1:500 - 1:2,000</p> <p>WB: 1:1,000 - 1:4,000</p>

Anti-beta Actin ACTB Antibody (A01263) Images



Western blot analysis of beta Actin expression in MW marker (lane 1), human embryonic kidney 293 cell lysates (lane 2), human lung carcinoma A549 cell lysates (lane 3) and mouse brain extract (lane 4). Load: 35



Beta Actin was detected in paraffin-embedded sections of rana pipiens tissues using rabbit anti-beta Actin affinity purified polyclonal antibody (Catalog # A01263) at 1:200. Localization: Beta Actin is at the neuromuscular junction. Staining: Beta Actin as precipitated green signal with red and blue counterstain.

192 Publications Citing This Product

1. PubMed ID: 10.1111/jnc.14890, Activation of liver X receptor promotes hippocampal neurogenesis and improves long-term cognitive function recovery in acute cerebral ischemia-reperfusion mice
2. PubMed ID: 33891271, Gao H,Wang D,Wang YL,Mao JP,Jiang S,Yang XL.Pramipexole attenuates 6-OHDA-induced Parkinson's disease by mediating the Nurr1/NF-kappaB pathway.Mol Biol Rep.2021 Apr 23.doi:10.1007/s11033-021-06343-8.Epub ahead of print.PMID:33891271.
3. PubMed ID: 32184591, Peng L,Liang Y,Zhong X,Liang Z,Tian Y,Li S,Liang J,Wang R,Zhong Y,Shi Y,Zhang X.Aptamer-Conjugated Gold Nanoparticles Targeting Epidermal Growth Factor Receptor Variant III for the Treatment of Glioblastoma.Int J Nanomedicine.2020 Feb 28;15:1363-1372.doi:

Visit bosterbio.com/anti-beta-actin-antibody-a01263-boster.html to see all 192 publications.

Submit a product review to Biocompare.com

Submit a review of this product to Biocompare.com to receive a \$20 Amazon.com giftcard! Your reviews help your fellow scientists make the right decisions. Thank you for your contribution.



Anti-beta Actin ACTB Antibody