

## Anti-CD141 THBD Antibody

Catalog Number: A01325

### Introduction

The antibody is directed against Thy-1 present in human brain, with small amounts in kidney. The 23.5kD a Thy-1 antigen is absent from human thymocytes and peripheral lymphocytes. Thymus, lymph node and spleen have small populations of F15-42-1-5 positive cells.

This antibody is routinely tested by flow cytometric analysis. Flow cytometry and other applications were tested during antibody development or are reported in the literature.

### Application Information

Each lot of this antibody has been quality control tested by flow cytometric analysis of human PBMCs. For flow cytometric staining, the recommended use of this antibody is  $\leq 0.5\mu\text{g}$  per  $1 \times 10^6$  cells in  $100\mu\text{l}$  of staining volume. It is strongly suggested that the antibody reactivity be empirically titrated for optimal performance in the application of interest.

### Overview

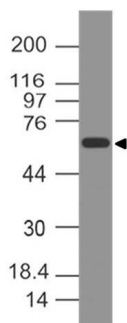
Product Name	Anti-CD141 THBD Antibody
Reactive Species	Human
Description	Boster Bio Anti-CD141 THBD Antibody (Catalog# A01325). Tested in WB application(s). This antibody reacts with Human.
Application	WB
Clonality	Polyclonal CFA-18
Formulation	100 ug in 200 ul PBS containing 0.05% BSA and 0.05% sodium azide.
Storage Instructions	Store the antibody at 4°C, stable for 6 months. For long-term storage, store at -20°C. Avoid repeated freeze and thaw cycles.
Host	Rabbit
Uniprot ID	P07204

### Technical Details

Immunogen	A partial length recombinant CD141 protein (amino acids 50-300)
Predicted Reactive Species	Bovine, Chicken, Xenopus Laevis, Xenopus Tropicalis, Zebrafish
Cross Reactivity	Predicted species reactivity based on epitope sequence homology: human, mouse, bovine, horse, rhesus macaque, dog, chimpanzee.

Isotype	Rabbit IgG
Form	Liquid
Concentration	0.5-1mg/ml, actual concentration vary by lot. Use suggested dilution ratio to decide dilution procedure.
Purification	Protein A Chromatography
Suggested Dilutions	<p>Dilute the sample so that the expected range of concentrations fall within the detection range of this kit.</p> <p>If the expected range of concentration is unknown, a pilot test should be conducted to decide the optimal dilution ratio for your samples.</p> <p>Some PubMed article(s) citing the expression level of this target are as follows:</p> <p>Boster Bio's internal QC testing used:</p> <p>Western blot: 1-2 µg/ml</p>

## Anti-CD141 THBD Antibody (A01325) Images



Western blot analysis of CD141. Anti-CD141 antibody was used at 2  $\mu$ g

### Submit a product review to Biocompare.com

Submit a review of this product to Biocompare.com to receive a \$20 Amazon.com giftcard! Your reviews help your fellow scientists make the right decisions. Thank you for your contribution.



Anti-CD141 THBD Antibody