

## Anti-Protein DBF4 homolog A DBF4 Antibody

Catalog Number: A01348-1

### About DBF4

Regulatory subunit for CDC7 which activates its kinase activity thereby playing a central role in DNA replication and cell proliferation. Required for progression of S phase. The complex CDC7-DBF4A selectively phosphorylates MCM2 subunit at 'Ser-40' and 'Ser-53' and then is involved in regulating the initiation of DNA replication during cell cycle.

Kumagai H., Mol. Cell. Biol. 19:5083-5095(1999).

Jiang W., EMBO J. 18:5703-5713(1999).

Ota T., Nat. Genet. 36:40-45(2004).

### Overview

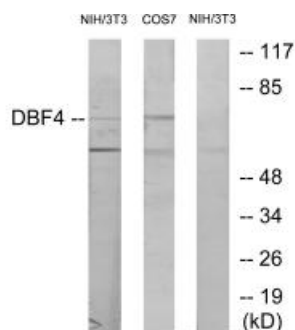
Product Name	Anti-Protein DBF4 homolog A DBF4 Antibody
Reactive Species	Human, Mouse
Description	Boster Bio Anti-Protein DBF4 homolog A DBF4 Antibody (Catalog # A01348-1). Tested in WB applications. This antibody reacts with Human, Mouse.
Application	WB
Clonality	Polyclonal
Formulation	Rabbit IgG in phosphate buffered saline (without Mg <sup>2+</sup> and Ca <sup>2+</sup> ), pH 7.4, 150mM NaCl, 0.02% sodium azide and 50% glycerol.
Storage Instructions	Store at -20°C for one year. For short term storage and frequent use, store at 4°C for up to one month. Avoid repeated freeze-thaw cycles.
Host	Rabbit
Uniprot ID	Q9UBU7

### Technical Details

Immunogen	Synthesized peptide derived from N-terminal of human DBF4.
Predicted Reactive Species	Boar, Bovine, Canine, Golden Hamster
Cross Reactivity	No cross reactivity with other proteins.
Isotype	IgG
Form	Liquid
Concentration	1 mg/ml

Purification	The antibody was affinity-purified from rabbit antiserum by affinity-chromatography using epitope-specific immunogen.
Suggested Dilutions	<p>Dilute the sample so that the expected range of concentrations fall within the detection range of this kit.</p> <p>If the expected range of concentration is unknown, a pilot test should be conducted to decide the optimal dilution ratio for your samples.</p> <p>Some PubMed article(s) citing the expression level of this target are as follows:</p> <p>Boster Bio's internal QC testing used:</p> <p>Western blotting: 1:500~1:3000</p>

## Anti-Protein DBF4 homolog A DBF4 Antibody (A01348-1) Images



Western blot analysis of extracts from NIH-3T3 cells treated with H<sub>2</sub>O<sub>2</sub> (100uM, 30mins) and COS-7 cells treated with PMA (125mg/ml, 30mins), using DBF4 antibody A01348-1.

### Submit a product review to Biocompare.com

Submit a review of this product to Biocompare.com to receive a \$20 Amazon.com giftcard! Your reviews help your fellow scientists make the right decisions. Thank you for your contribution.



Anti-Protein DBF4 homolog A DBF4 Antibody