

Anti-SLCO1B1/Oatp2 Antibody

Catalog Number: A01375

About SLCO1B1

Mediates the Na⁺-independent uptake of organic anions such as pravastatin, taurocholate, methotrexate, dehydroepiandrosterone sulfate, 17-beta-glucuronosyl estradiol, estrone sulfate, prostaglandin E2, thromboxane B2, leukotriene C3, leukotriene E4, thyroxine and triiodothyronine. Involved in the clearance of bile acids and organic anions from the liver.

Kirchgessner T.G., J. Biol. Chem. 274:37161-37168(1999).

Keppler D., J. Biol. Chem. 275:23161-23168(2000).

Venter J.C., Submitted (JUL-2005).

Overview

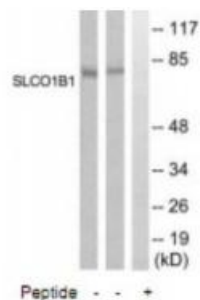
Product Name	Anti-SLCO1B1/Oatp2 Antibody
Reactive Species	Human
Description	Boster Bio Anti-SLCO1B1/Oatp2 Antibody (Catalog # A01375). Tested in WB applications. This antibody reacts with Human.
Application	WB
Clonality	Polyclonal
Formulation	Rabbit IgG in phosphate buffered saline (without Mg ²⁺ and Ca ²⁺), pH 7.4, 150mM NaCl, 0.02% sodium azide and 50% glycerol.
Storage Instructions	Store at -20°C for one year. For short term storage and frequent use, store at 4°C for up to one month. Avoid repeated freeze-thaw cycles.
Host	Rabbit
Uniprot ID	Q9Y6L6

Technical Details

Immunogen	Synthesized peptide derived from internal of human SLCO1B1.
Predicted Reactive Species	Boar, Bovine, Canine, Golden Hamster
Cross Reactivity	No cross reactivity with other proteins.
Isotype	IgG
Form	Liquid
Concentration	1 mg/ml

Purification	The antibody was affinity-purified from rabbit antiserum by affinity-chromatography using epitope-specific immunogen.
Suggested Dilutions	<p>Dilute the sample so that the expected range of concentrations fall within the detection range of this kit.</p> <p>If the expected range of concentration is unknown, a pilot test should be conducted to decide the optimal dilution ratio for your samples.</p> <p>Some PubMed article(s) citing the expression level of this target are as follows:</p> <p>Boster Bio's internal QC testing used:</p> <p>Western blotting: 1:500~1:3000</p>

Anti-SLCO1B1/Oatp2 Antibody (A01375) Images



Western blot analysis of extracts from COLO205 and Jurkat cells, using SLCO1B1 antibody A01375.

Submit a product review to Biocompare.com

Submit a review of this product to Biocompare.com to receive a \$20 Amazon.com giftcard! Your reviews help your fellow scientists make the right decisions. Thank you for your contribution.



Anti-SLCO1B1/Oatp2 Antibody