

Anti-PKR(Ab-446) EIF2AK2 Antibody

Catalog Number: A01384

About EIF2AK2

Following activation by double-stranded RNA in the presence of ATP, the kinase becomes autophosphorylated and can catalyze the phosphorylation of the translation initiation factor EIF2S1, which leads to an inhibition of the initiation of protein synthesis. Double-stranded RNA is generated during the course of a viral infection.

Abujiang Pataer, et.al. (2002) Cancer Res ; 62: 2239.

K. D. Ryman, et.al. (2005) J. Virol ; 79: 1487 - 1499.

Susana Guerra, et.al. (2006) J. Biol. Chem ; 281: 18734 - 18745.

Overview

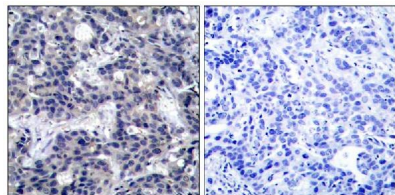
Product Name	Anti-PKR(Ab-446) EIF2AK2 Antibody
Reactive Species	Human, Rat
Description	Boster Bio Anti-PKR(Ab-446) EIF2AK2 Antibody (Catalog # A01384). Tested in WB, IHC, IF applications. This antibody reacts with Human, Rat.
Application	IF, IHC, WB
Clonality	Polyclonal
Formulation	Supplied at 1.0mg/mL in phosphate buffered saline (without Mg ²⁺ and Ca ²⁺), pH 7.4, 150mM NaCl, 0.02% sodium azide and 50% glycerol.
Storage Instructions	Store at -20°C for one year. For short term storage and frequent use, store at 4°C for up to one month. Avoid repeated freeze-thaw cycles.
Host	Rabbit
Uniprot ID	P19525

Technical Details

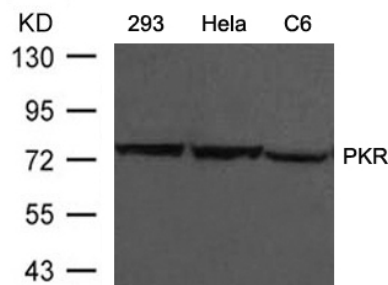
Immunogen	Peptide sequence around aa.444~448 (K-R-T-R-S) derived from Human PKR.
Predicted Reactive Species	Boar, Bovine, Canine, Golden Hamster
Cross Reactivity	No cross reactivity with other proteins.
Isotype	IgG
Form	Liquid
Concentration	1 mg/ml

Purification	Antibodies were produced by immunizing rabbits with synthetic peptide and KLH conjugates. Antibodies were purified by affinity-chromatography using epitope-specific peptide.
Suggested Dilutions	Dilute the sample so that the expected range of concentrations fall within the detection range of this kit. If the expected range of concentration is unknown, a pilot test should be conducted to decide the optimal dilution ratio for your samples. Some PubMed article(s) citing the expression level of this target are as follows: Boster Bio's internal QC testing used: Predicted MW: 68kd Western blotting: 1:500~1:1000 Immunohistochemistry: 1:50~1:100 Immunofluorescence: 1:100~1:200

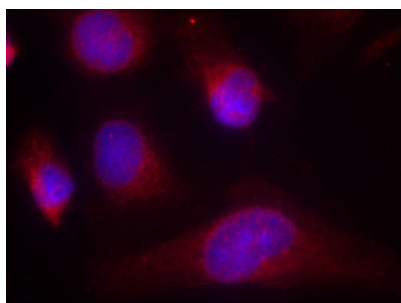
Anti-PKR(Ab-446) EIF2AK2 Antibody (A01384) Images



Immunohistochemical analysis of paraffin-embedded human breast carcinoma tissue using PKR(Ab-446) antibody A01384(left) or the same antibody preincubated with blocking peptide(right).



Western blot analysis of extracts from 293, HeLa and C6 cells using PKR(Ab-446) antibody A01384.



Immunofluorescence staining of methanol-fixed HeLa cells using PKR(Ab-446) antibody A01384.

Submit a product review to Biocompare.com

Submit a review of this product to Biocompare.com to receive a \$20 Amazon.com giftcard! Your reviews help your fellow scientists make the right decisions. Thank you for your contribution.



Anti-PKR(Ab-446) EIF2AK2 Antibody