

Anti-PRMT1 Antibody

Catalog Number: A01417-2

About PRMT1

Following activation by double-stranded RNA in the presence of ATP, the kinase becomes autophosphorylated and can catalyze the phosphorylation of the translation initiation factor EIF2S1, which leads to an inhibition of the initiation of protein synthesis. Double-stranded RNA is generated during the course of a viral infection.

Abujiang Pataer, et.al. (2002) Cancer Res ; 62: 2239.

K. D. Ryman, et.al. (2005) J. Virol ; 79: 1487 - 1499.

Susana Guerra, et.al. (2006) J. Biol. Chem ; 281: 18734 - 18745.

Overview

Product Name	Anti-PRMT1 Antibody
Reactive Species	Human, Mouse, Rat
Description	Boster Bio Anti-PRMT1 Antibody catalog # A01417-2. Tested in WB,ICC/IF,IHC,CHIP applications. This antibody reacts with Human,Mouse,Rat.
Application	ChIP, IF, IHC, ICC, WB
Clonality	Polyclonal
Formulation	Rabbit IgG, 1mg/ml in PBS with 0.02% sodium azide, 50% glycerol, pH7.2
Storage Instructions	Store at -20°C for one year. For short term storage and frequent use, store at 4°C for up to one month. Avoid repeated freeze-thaw cycles.
Host	Rabbit
Uniprot ID	Q99873

Technical Details

Immunogen	Synthesized peptide derived from human GATA-2 around the phosphorylation site of S401.
Predicted Reactive Species	Boar, Bovine, Canine, Golden Hamster
Cross Reactivity	No cross reactivity with other proteins.
Isotype	IgG
Form	Liquid
Concentration	1 mg/ml

Purification	ProA affinity purified
Suggested Dilutions	<p>Dilute the sample so that the expected range of concentrations fall within the detection range of this kit.</p> <p>If the expected range of concentration is unknown, a pilot test should be conducted to decide the optimal dilution ratio for your samples.</p> <p>Some PubMed article(s) citing the expression level of this target are as follows:</p> <p>Boster Bio's internal QC testing used:</p> <p>WB: 1:500-1:1,000 ICC: 1:100-1:500 IHC: 1:50-1:200</p>

Anti-PRMT1 Antibody (A01417-2) Images

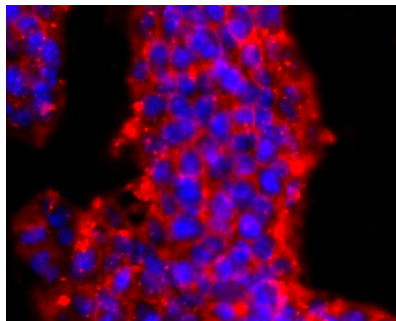


Figure 1. Immunocytochemistry staining of PRMT1 using Anti-PRMT1 Antibody (A01417-2).

ICC staining PRMT1 in D3 cells (red). The nuclear counter stain is DAPI (blue). Cells were fixed in paraformaldehyde

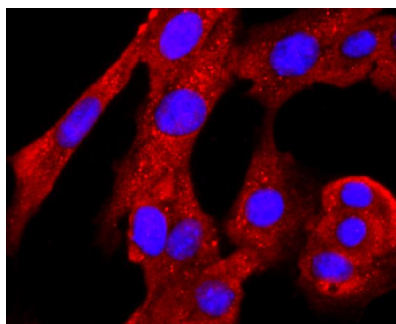


Figure 2. Immunocytochemistry staining of PRMT1 using Anti-PRMT1 Antibody (A01417-2).

ICC staining PRMT1 in NIH-3T3 cells (red). The nuclear counter stain is DAPI (blue). Cells were fixed in paraformaldehyde

Submit a product review to Biocompare.com

Submit a review of this product to Biocompare.com to receive a \$20 Amazon.com giftcard! Your reviews help your fellow scientists make the right decisions. Thank you for your contribution.



Anti-PRMT1 Antibody