

Anti-ACVL1 ACVRL1 Antibody

Catalog Number: A01468-1

About ACVRL1

Type I receptor for TGF-beta family ligands BMP9/GDF2 and BMP10 and important regulator of normal blood vessel development. On ligand binding, forms a receptor complex consisting of two type II and two type I transmembrane serine/threonine kinases. Type II receptors phosphorylate and activate type I receptors which autophosphorylate, then bind and activate SMAD transcriptional regulators. May bind activin as well.

ten Dijke P., Oncogene 8:2879-2887(1993).

Attisano L., Cell 75:671-680(1993).

Berg J.N., Am. J. Hum. Genet. 61:60-67(1997).

Overview

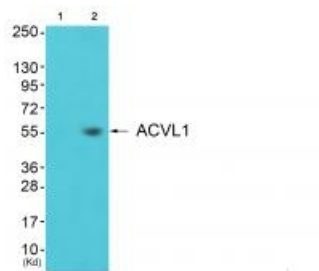
Product Name	Anti-ACVL1 ACVRL1 Antibody
Reactive Species	Human, Mouse, Rat
Description	Boster Bio Anti-ACVL1 ACVRL1 Antibody (Catalog # A01468-1). Tested in WB, IHC, IF applications. This antibody reacts with Human, Mouse, Rat.
Application	IF, IHC, WB
Clonality	Polyclonal
Formulation	Rabbit IgG in phosphate buffered saline (without Mg ²⁺ and Ca ²⁺), pH 7.4, 150mM NaCl, 0.02% sodium azide and 50% glycerol.
Storage Instructions	Store at -20°C for one year. For short term storage and frequent use, store at 4°C for up to one month. Avoid repeated freeze-thaw cycles.
Host	Rabbit
Uniprot ID	P37023

Technical Details

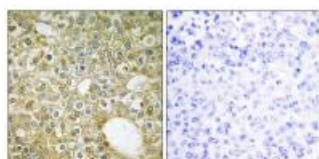
Immunogen	Synthesized peptide derived from internal of human ACVL1.
Predicted Reactive Species	Boar, Bovine, Canine, Golden Hamster
Cross Reactivity	No cross reactivity with other proteins.
Isotype	IgG
Form	Liquid

Concentration	1 mg/ml
Purification	The antibody was affinity-purified from rabbit antiserum by affinity-chromatography using epitope-specific immunogen.
Suggested Dilutions	<p>Dilute the sample so that the expected range of concentrations fall within the detection range of this kit.</p> <p>If the expected range of concentration is unknown, a pilot test should be conducted to decide the optimal dilution ratio for your samples.</p> <p>Some PubMed article(s) citing the expression level of this target are as follows:</p> <p>Boster Bio's internal QC testing used:</p> <p>Western blotting: 1:500~1:3000</p> <p>Immunohistochemistry: 1:50~1:100</p> <p>Immunofluorescence: 1:100~1:500</p>

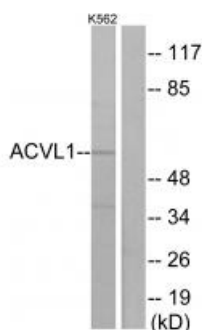
Anti-ACVL1 ACVRL1 Antibody (A01468-1) Images



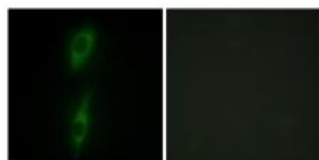
Western blot analysis of extracts from 3T3 cells (Lane 2), using ACVL1 antibody A01468-1. The lane on the left is treated with synthesized peptide.



Immunohistochemistry analysis of paraffin-embedded human breast carcinoma tissue using ACVL1 antibody A01468-1.



Western blot analysis of extracts from K562 cells, using ACVL1 antibody A01468-1.



Immunofluorescence analysis of HeLa cells, using ACVL1 antibody A01468-1.

Submit a product review to Biocompare.com

Submit a review of this product to Biocompare.com to receive a \$20 Amazon.com giftcard! Your reviews help your fellow scientists make the right decisions. Thank you for your contribution.



Anti-ACVL1 ACVRL1 Antibody