

Anti-ARHGEF5 Antibody

Catalog Number: A01487-1

About ARHGEF5

Rho GTPases play a fundamental role in numerous cellular processes initiated by extracellular stimuli that work through G protein coupled receptors. The encoded protein may form a complex with G proteins and stimulate Rho-dependent signals. This protein may be involved in the control of cytoskeletal organization.

Chan A.M.-L., Oncogene 9:1057-1063(1994).

Jikuya H., Submitted (APR-2004) to the EMBL/GenBank/DBJ databases.

Hillier L.W., Nature 424:157-164(2003)

Overview

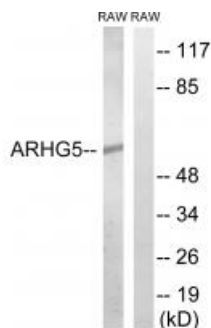
Product Name	Anti-ARHGEF5 Antibody
Reactive Species	Human, Mouse
Description	Boster Bio Anti-ARHGEF5 Antibody (Catalog # A01487-1). Tested in WB applications. This antibody reacts with Human, Mouse.
Application	WB
Clonality	Polyclonal
Formulation	Rabbit IgG in phosphate buffered saline (without Mg ²⁺ and Ca ²⁺), pH 7.4, 150mM NaCl, 0.02% sodium azide and 50% glycerol.
Storage Instructions	Store at -20°C for one year. For short term storage and frequent use, store at 4°C for up to one month. Avoid repeated freeze-thaw cycles.
Host	Rabbit
Uniprot ID	Q12774

Technical Details

Immunogen	Synthesized peptide derived from internal of human ARHGEF5.
Predicted Reactive Species	Boar, Bovine, Canine, Golden Hamster
Cross Reactivity	No cross reactivity with other proteins.
Isotype	IgG
Form	Liquid
Concentration	1 mg/ml

Purification	The antibody was affinity-purified from rabbit antiserum by affinity-chromatography using epitope-specific immunogen.
Suggested Dilutions	<p>Dilute the sample so that the expected range of concentrations fall within the detection range of this kit.</p> <p>If the expected range of concentration is unknown, a pilot test should be conducted to decide the optimal dilution ratio for your samples.</p> <p>Some PubMed article(s) citing the expression level of this target are as follows:</p> <p>Boster Bio's internal QC testing used:</p> <p>Western blotting: 1:500~1:3000</p>

Anti-ARHGEF5 Antibody (A01487-1) Images



Western blot analysis of extracts from RAW264.7 cells, using ARHGEF5 antibody A01487-1.

Submit a product review to Biocompare.com

Submit a review of this product to Biocompare.com to receive a \$20 Amazon.com giftcard! Your reviews help your fellow scientists make the right decisions. Thank you for your contribution.



Anti-ARHGEF5 Antibody