

Anti-LC3a MAP1LC3A Antibody

Catalog Number: A01543

About MAP1LC3A

Probably involved in formation of autophagosomal vacuoles (autophagosomes).

Overview

Product Name	Anti-LC3a MAP1LC3A Antibody
Reactive Species	Human, Mouse, Rat
Description	Boster Bio Anti-LC3a MAP1LC3A Antibody (Catalog # A01543). Tested in WB, IF applications. This antibody reacts with Human, Mouse, Rat.
Application	IF, WB
Clonality	Polyclonal
Formulation	Supplied at 1.0mg/mL in phosphate buffered saline (without Mg ²⁺ and Ca ²⁺), pH 7.4, 150mM NaCl, 0.02% sodium azide and 50% glycerol.
Storage Instructions	Store at -20°C for one year. For short term storage and frequent use, store at 4°C for up to one month. Avoid repeated freeze-thaw cycles.
Host	Rabbit
Uniprot ID	Q9H492

Technical Details

Immunogen	Peptide sequence around aa.5~10 (R-P-F-K-Q) derived from Human LC3A.
Predicted Reactive Species	Boar, Bovine, Canine, Golden Hamster
Cross Reactivity	No cross reactivity with other proteins.
Isotype	IgG
Form	Liquid
Concentration	1 mg/ml
Purification	Antibodies were produced by immunizing rabbits with synthetic peptide and KLH conjugates. Antibodies were purified by affinity-chromatography using epitope-specific peptide.
Suggested Dilutions	Dilute the sample so that the expected range of concentrations fall within the detection range of this kit. If the expected range of concentration is unknown, a pilot test should be conducted to decide the optimal dilution ratio for your samples.

Some PubMed article(s) citing the expression level of this target are as follows:

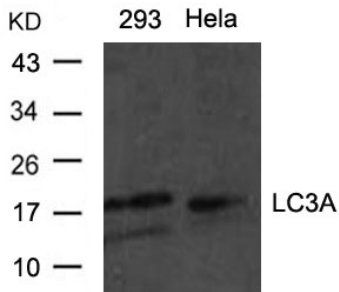
Boster Bio's internal QC testing used:

Predicted MW: 18 16 kd

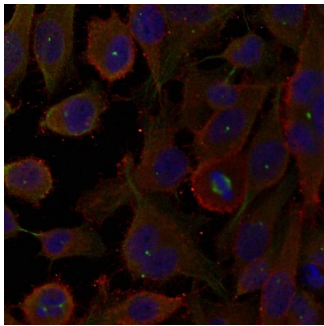
Western blotting: 1:500~1:1000

Immunofluorescence: 1:100~1:200

Anti-LC3a MAP1LC3A Antibody (A01543) Images



Western blot analysis of extracts from HeLa and 293 cells using LC3A antibody A01543.



Immunofluorescence staining of methanol-fixed HeLa cells using LC3A antibody A01543.

3 Publications Citing This Product

1. PubMed ID: 10.1002/ar.23798, Reducing Autophagy Derived Mitochondrial Dysfunction during Resveratrol Promotes Fibroblast-Like Synovial Cell Apoptosis
2. PubMed ID: 10.1002/ar.23798, Reducing Autophagy Derived Mitochondrial Dysfunction during Resveratrol Promotes Fibroblast-Like Synovial Cell Apoptosis
3. PubMed ID: 10.1002/ar.23798, Reducing Autophagy Derived Mitochondrial Dysfunction during Resveratrol Promotes Fibroblast-Like Synovial Cell Apoptosis

Visit bosterbio.com/anti-lc3a-antibody-a01543-boster.html to see all 3 publications.

Submit a product review to Biocompare.com

Submit a review of this product to Biocompare.com to receive a \$20 Amazon.com giftcard! Your reviews help your fellow scientists make the right decisions. Thank you for your contribution.



Anti-LC3a MAP1LC3A Antibody