

Anti-S6 Ribosomal Protein(Ab-235) RPS6 Antibody

Catalog Number: A01567

About RPS6

May play an important role in controlling cell growth and proliferation through the selective translation of particular classes of mRNA.

McBride K, et al. (1998) Mol Cell Biol 18(9): 5073-5081.

Williams AJ, et al. (2003) Plant Physiol 132(4): 2086-2097.

Wilson MA, et al. (1997) Biochem J 325(Pt 1): 217-222.

Arnesen T, et al. (2005) Biochem J 386(Pt 3): 433-443.

Overview

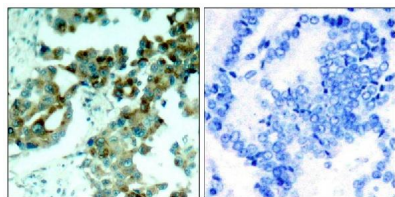
Product Name	Anti-S6 Ribosomal Protein(Ab-235) RPS6 Antibody
Reactive Species	Human, Mouse, Rat
Description	Boster Bio Anti-S6 Ribosomal Protein(Ab-235) RPS6 Antibody (Catalog # A01567). Tested in WB, IHC, IF applications. This antibody reacts with Human, Mouse, Rat.
Application	IF, IHC, WB
Clonality	Polyclonal
Formulation	Supplied at 1.0mg/mL in phosphate buffered saline (without Mg ²⁺ and Ca ²⁺), pH 7.4, 150mM NaCl, 0.02% sodium azide and 50% glycerol.
Storage Instructions	Store at -20°C for one year. For short term storage and frequent use, store at 4°C for up to one month. Avoid repeated freeze-thaw cycles.
Host	Rabbit
Uniprot ID	P62753

Technical Details

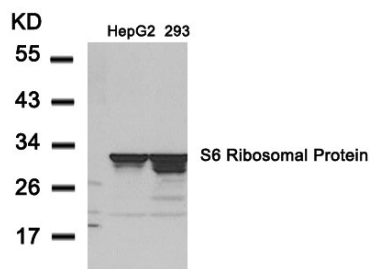
Immunogen	Peptide sequence around aa. 233~237 (R-L-S-S-L) derived from Human S6 Ribosomal Protein.
Predicted Reactive Species	Boar, Bovine, Canine, Golden Hamster
Cross Reactivity	No cross reactivity with other proteins.
Isotype	IgG
Form	Liquid
Concentration	1 mg/ml

Purification	Antibodies were produced by immunizing rabbits with synthetic peptide and KLH conjugates. Antibodies were purified by affinity-chromatography using epitope-specific peptide.
Suggested Dilutions	<p>Dilute the sample so that the expected range of concentrations fall within the detection range of this kit.</p> <p>If the expected range of concentration is unknown, a pilot test should be conducted to decide the optimal dilution ratio for your samples.</p> <p>Some PubMed article(s) citing the expression level of this target are as follows:</p> <p>Boster Bio's internal QC testing used:</p> <p>Predicted MW: 32kd</p> <p>Western blotting: 1:500~1:1000</p> <p>Immunohistochemistry: 1:50~1:100</p> <p>Immunofluorescence: 1:100~1:200</p>

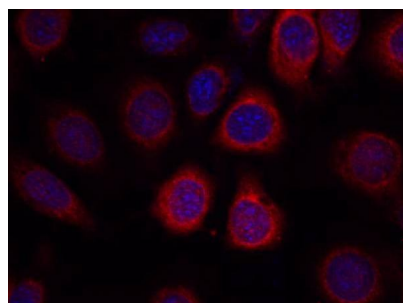
Anti-S6 Ribosomal Protein(Ab-235) RPS6 Antibody (A01567) Images



Immunohistochemical analysis of paraffin-embedded human lung carcinoma tissue using S6 Ribosomal Protein(Ab-235) antibody A01567(left) or the same antibody preincubated with blocking peptide(right).



Western blot analysis of extracts from HepG2 and 293 cells using S6 Ribosomal Protein(Ab-235) antibody A01567.



Immunofluorescence staining of methanol-fixed MCF7 cells using S6 Ribosomal Protein(Ab-235) antibody A01567.

Submit a product review to Biocompare.com

Submit a review of this product to Biocompare.com to receive a \$20 Amazon.com giftcard! Your reviews help your fellow scientists make the right decisions. Thank you for your contribution.



Anti-S6 Ribosomal Protein(Ab-235) RPS6 Antibody