

Anti-ADD1 (Ab-726) Antibody

Catalog Number: A01575

About ADD1

Membrane-cytoskeleton-associated protein that promotes the assembly of the spectrin-actin network. Binds to calmodulin.

Yun Sok Lee, Mol. Cell. Biol., Jan 2007; 27: 438 - 452.

Kang Ho Kim, J. Biol. Chem., Dec 2004; 279: 51999 - 52006.

Marc Foretz, Mol. Cell. Biol., May 1999; 19: 3760 - 3768.

Jae Bum Kim, J. Clin. Invest., Jan 1998; 101: 1.

Overview

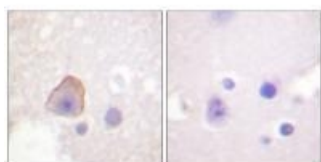
Product Name	Anti-ADD1 (Ab-726) Antibody
Reactive Species	Human, Mouse, Rat
Description	Boster Bio Anti-ADD1 (Ab-726) Antibody (Catalog # A01575). Tested in WB, IHC, IF applications. This antibody reacts with Human, Mouse, Rat.
Application	IF, IHC, WB
Clonality	Polyclonal
Formulation	Rabbit IgG in phosphate buffered saline (without Mg ²⁺ and Ca ²⁺), pH 7.4, 150mM NaCl, 0.02% sodium azide and 50% glycerol.
Storage Instructions	Store at -20°C for one year. For short term storage and frequent use, store at 4°C for up to one month. Avoid repeated freeze-thaw cycles.
Host	Rabbit
Uniprot ID	P35611

Technical Details

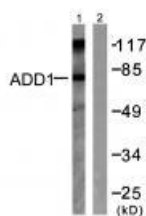
Immunogen	Synthesized non-phosphopeptide derived from human ADD1 around the phosphorylation site of serine 726 (T-P-S(p)-F-L).
Predicted Reactive Species	Boar, Bovine, Canine, Golden Hamster
Cross Reactivity	No cross reactivity with other proteins.
Isotype	IgG
Form	Liquid
Concentration	1 mg/ml

Purification	The antibody was affinity-purified from rabbit antiserum by affinity-chromatography using epitope-specific immunogen.
Suggested Dilutions	<p>Dilute the sample so that the expected range of concentrations fall within the detection range of this kit.</p> <p>If the expected range of concentration is unknown, a pilot test should be conducted to decide the optimal dilution ratio for your samples.</p> <p>Some PubMed article(s) citing the expression level of this target are as follows:</p> <p>Boster Bio's internal QC testing used:</p> <p>Western blotting: 1:500~1:3000</p> <p>Immunohistochemistry: 1:50~1:100</p> <p>Immunofluorescence: 1:100~1:500</p>

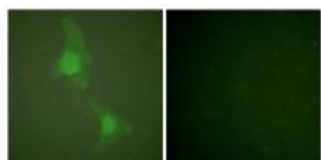
Anti-ADD1 (Ab-726) Antibody (A01575) Images



Immunohistochemical analysis of paraffin-embedded human brain tissue using ADD1 (Ab-726) antibody A01575.



Western blot analysis of extracts from HeLa cells treated with Forskolin (40nM, 30min), using ADD1 (Ab-726) antibody A01575.



Immunofluorescence analysis of HeLa cells, using ADD1 (Ab-726) antibody A01575

Submit a product review to Biocompare.com

Submit a review of this product to Biocompare.com to receive a \$20 Amazon.com giftcard! Your reviews help your fellow scientists make the right decisions. Thank you for your contribution.



Anti-ADD1 (Ab-726) Antibody