

Anti-NEK2 Antibody

Catalog Number: A01606

Introduction

The antibody is directed against Thy-1 present in human brain, with small amounts in kidney. The 23.5kD a Thy-1 antigen is absent from human thymocytes and peripheral lymphocytes. Thymus, lymph node and spleen have small populations of F15-42-1-5 positive cells.

This antibody is routinely tested by flow cytometric analysis. Flow cytometry and other applications were tested during antibody development or are reported in the literature.

Application Information

Each lot of this antibody has been quality control tested by flow cytometric analysis of human PBMCs. For flow cytometric staining, the recommended use of this antibody is $\leq 0.5\mu\text{g}$ per 1×10^6 cells in $100\mu\text{l}$ of staining volume. It is strongly suggested that the antibody reactivity be empirically titrated for optimal performance in the application of interest.

About NEK2

NEK2, also called serine/threonine-protein kinase Nek2NimA-related protein kinase 2, NimA-like protein kinase 1 and HSPK 21, is a protein kinase involved in mitotic regulation that may have a role at the G_2 -M transition and may also play a role in meiosis. NEK2 has a nuclear localization and accumulates throughout S phase and shows maximal levels in late G_2 . This expression pattern is highly reminiscent of that of A and B cyclins.

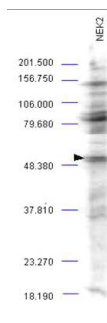
Overview

Product Name	Anti-NEK2 Antibody
Reactive Species	Mouse
Description	Boster Bio Anti-NEK2 Antibody (Catalog # A01606). Tested in ELISA, WB applications. This antibody reacts with Mouse.
Application	ELISA, WB
Clonality	Polyclonal CFA-18
Formulation	0.02 M Potassium Phosphate, 0.15 M Sodium Chloride, pH 7.2, 0.01% (w/v) Sodium Azide
Storage Instructions	Store vial at -20°C prior to opening. Aliquot contents and freeze at -20°C or below for extended storage. Avoid cycles of freezing and thawing. Centrifuge product if not completely clear after standing at room temperature. This product is stable for several weeks at 4°C as an undiluted liquid. Dilute only prior to immediate use. Expiration date is one (1) year from date of opening. (Ship on dry ice.)
Host	Rabbit
Uniprot ID	P51955

Technical Details

Immunogen	This affinity purified antibody was prepared from whole rabbit serum produced by repeated immunizations with a synthetic peptide corresponding to an internal region near aa 275-300 of Human NEK2 protein.
Predicted Reactive Species	Bovine, Chicken, Xenopus Laevis, Xenopus Tropicalis, Zebrafish
Cross Reactivity	Predicted species reactivity based on epitope sequence homology: human, mouse, bovine, horse, rhesus macaque, dog, chimpanzee.
Isotype	IgG
Form	Liquid (sterile filtered)
Concentration	1.1 mg/mL by UV absorbance at 280 nm
Purification	This product is an affinity-purified antibody produced by immunoaffinity chromatography using peptide coupled to agarose beads. BLAST analysis indicates 100 % homology of the immunizing sequence with NEK2 homologues from human and chimpanzee. Cross-reactivity with NEK2 protein homologues from other sources may not occur as sequence homology varies by at least one amino acid residue in this sequence.
Suggested Dilutions	<p>Dilute the sample so that the expected range of concentrations fall within the detection range of this kit.</p> <p>If the expected range of concentration is unknown, a pilot test should be conducted to decide the optimal dilution ratio for your samples.</p> <p>Some PubMed article(s) citing the expression level of this target are as follows:</p> <p>Boster Bio's internal QC testing used:</p> <p>ELISA: 1:2,000 - 1:10,000</p> <p>IF Microscopy: User optimized</p> <p>WB: 1:500 - 1:2,000</p>

Anti-NEK2 Antibody (A01606) Images



Submit a product review to Biocompare.com

Submit a review of this product to Biocompare.com to receive a \$20 Amazon.com giftcard! Your reviews help your fellow scientists make the right decisions. Thank you for your contribution.



Anti-NEK2 Antibody