

Anti-TRBP TARBP2 Antibody

Catalog Number: A01680

Introduction

The antibody is directed against Thy-1 present in human brain, with small amounts in kidney. The 23.5kD a Thy-1 antigen is absent from human thymocytes and peripheral lymphocytes. Thymus, lymph node and spleen have small populations of F15-42-1-5 positive cells.

This antibody is routinely tested by flow cytometric analysis. Flow cytometry and other applications were tested during antibody development or are reported in the literature.

Application Information

Each lot of this antibody has been quality control tested by flow cytometric analysis of human PBMCs. For flow cytometric staining, the recommended use of this antibody is $\leq 0.5\mu\text{g}$ per 1×10^6 cells in $100\mu\text{l}$ of staining volume. It is strongly suggested that the antibody reactivity be empirically titrated for optimal performance in the application of interest.

About TARBP2

NEK2, also called serine/threonine-protein kinase Nek2NimA-related protein kinase 2, NimA-like protein kinase 1 and HSPK 21, is a protein kinase involved in mitotic regulation that may have a role at the G_2 -M transition and may also play a role in meiosis. NEK2 has a nuclear localization and accumulates throughout S phase and shows maximal levels in late G_2 . This expression pattern is highly reminiscent of that of A and B cyclins.

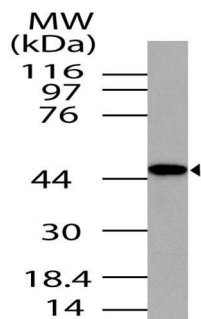
Overview

Product Name	Anti-TRBP TARBP2 Antibody
Reactive Species	Human
Description	Boster Bio Anti-TRBP TARBP2 Antibody (Catalog# A01680). Tested in WB application(s). This antibody reacts with Human.
Application	WB
Clonality	Polyclonal CFA-18
Formulation	100 ug in 200 ul PBS containing 0.05% BSA and 0.05% sodium azide.
Storage Instructions	Store the antibody at 4°C, stable for 6 months. For long-term storage, store at -20°C. Avoid repeated freeze and thaw cycles.
Host	Rabbit
Uniprot ID	Q15633

Technical Details

Immunogen	A partial length recombinant TRBP protein (amino acids 150-366)
Predicted Reactive Species	Bovine, Chicken, Xenopus Laevis, Xenopus Tropicalis, Zebrafish
Cross Reactivity	Predicted species reactivity based on epitope sequence homology: human, mouse, bovine, horse, rhesus macaque, dog, chimpanzee.
Isotype	Rabbit IgG
Form	Liquid
Concentration	0.5-1mg/ml, actual concentration vary by lot. Use suggested dilution ratio to decide dilution procedure.
Purification	Protein A Chromatography
Suggested Dilutions	<p>Dilute the sample so that the expected range of concentrations fall within the detection range of this kit.</p> <p>If the expected range of concentration is unknown, a pilot test should be conducted to decide the optimal dilution ratio for your samples.</p> <p>Some PubMed article(s) citing the expression level of this target are as follows:</p> <p>Boster Bio's internal QC testing used:</p> <p>Western blot: 6-7 µg/ml</p>

Anti-TRBP TARBP2 Antibody (A01680) Images



Western blot analysis of TRBP. Anti-TRBP antibody was used at 6 μ g/ml

Submit a product review to Biocompare.com

Submit a review of this product to Biocompare.com to receive a \$20 Amazon.com giftcard! Your reviews help your fellow scientists make the right decisions. Thank you for your contribution.



Anti-TRBP TARBP2 Antibody