

## Anti-SEK1/MKK4 (Ab-261) MAP2K4 Antibody

Catalog Number: A01725

### About MAP2K4

Dual specificity kinase that activates the JUN kinases MAPK8 (JNK1) and MAPK9 (JNK2) as well as MAPK14 (p38) but not MAPK1 (ERK2) or MAPK3 (ERK1).

Wang W, et al. (2002) Mol Cell Biol; 22(10): 3389-403.

Leung IW, et al. (2001) J Biol Chem; 276(3): 1961-7.

### Overview

Product Name	Anti-SEK1/MKK4 (Ab-261) MAP2K4 Antibody
Reactive Species	Human, Mouse, Rat
Description	Boster Bio Anti-SEK1/MKK4 (Ab-261) MAP2K4 Antibody (Catalog # A01725). Tested in IHC, IF applications. This antibody reacts with Human, Mouse, Rat.
Application	IF, IHC
Clonality	Polyclonal
Formulation	Supplied at 1.0mg/mL in phosphate buffered saline (without Mg <sup>2+</sup> and Ca <sup>2+</sup> ), pH 7.4, 150mM NaCl, 0.02% sodium azide and 50% glycerol.
Storage Instructions	Store at -20°C for one year. For short term storage and frequent use, store at 4°C for up to one month. Avoid repeated freeze-thaw cycles.
Host	Rabbit
Uniprot ID	P45985

### Technical Details

Immunogen	Peptide sequence around aa.259~263 (A-K-T-R-D) derived from Human SEK1/MKK4.
Predicted Reactive Species	Bovine, Canine, Equine, Guinea Pig, Pig, Rabbit, Sheep
Isotype	IgG
Form	Liquid
Concentration	1 mg/ml
Purification	Antibodies were produced by immunizing rabbits with synthetic peptide and KLH conjugates. Antibodies were purified by affinity-chromatography using epitope-specific peptide.
Suggested Dilutions	Dilute the sample so that the expected range of concentrations fall within the detection range of this

kit.

If the expected range of concentration is unknown, a pilot test should be conducted to decide the optimal dilution ratio for your samples.

Some PubMed article(s) citing the expression level of this target are as follows:

Boster Bio's internal QC testing used:

Predicted MW: 44kd

Immunohistochemistry: 1:50~1:100

Immunofluorescence: 1:100~1:200

## Anti-SEK1/MKK4 (Ab-261) MAP2K4 Antibody (A01725) Images

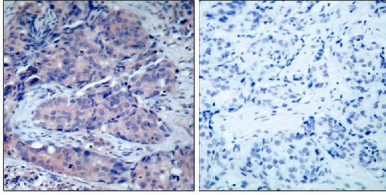
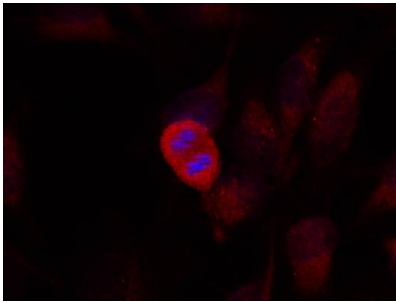


Figure 1. IHC analysis of MAP2K4 using anti-MAP2K4 antibody (A01725). MAP2K4 was detected in paraffin-embedded section. Heat mediated antigen retrieval was performed in citrate buffer (pH6, epitope retrieval solution) for 20 mins. The tissue section was blocked with 10% goat serum. The tissue section was then incubated with 1ug/ml rabbit anti-MAP2K4 Antibody (A01725) overnight at 4°C. Biotinylated goat anti Rabbit IgG antibody was used as secondary antibody and incubated for 30 minutes at 37°C. The tissue section was developed using Streptavidin-Biotin-Complex (SABC)(Catalog # SA1022) with DAB as the chromogen.



Immunofluorescence staining of methanol-fixed Hela cells using SEK1/MKK4(Ab-261) Antibody #A01725.

## Submit a product review to Biocompare.com

Submit a review of this product to Biocompare.com to receive a \$20 Amazon.com giftcard! Your reviews help your fellow scientists make the right decisions. Thank you for your contribution.



Anti-SEK1/MKK4 (Ab-261) MAP2K4 Antibody