

Anti-HCFC1/Hcf1 Antibody

Catalog Number: A01729

About HCFC1

Involved in control of the cell cycle. Also antagonizes transactivation by ZBTB17 and GABP2; represses ZBTB17 activation of the p15(INK4b) promoter and inhibits its ability to recruit p300. Coactivator for EGR2 and GABP2. Tethers the chromatin modifying Set1/Ash2 histone H3 'Lys-4' methyltransferase (H3K4me) and Sin3 histone deacetylase (HDAC) complexes (involved in the activation and repression of transcription, respectively) together. Component of a THAP1/THAP3-HCFC1-OGT complex that is required for the regulation of the transcriptional activity of RRM1. As part of the NSL complex it may be involved in acetylation of nucleosomal histone H4 on several lysine residues. In case of human herpes simplex virus (HSV) infection, HCFC1 forms a multiprotein-DNA complex with the viral transactivator protein VP16 and POU2F1 thereby enabling the transcription of the viral immediate early genes.

Wilson A.C., Cell 74:115-125(1993).

Kristie T.M., J. Biol. Chem. 270:4387-4394(1995).

Ross M.T., Nature 434:325-337(2005).

Overview

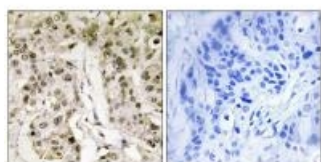
Product Name	Anti-HCFC1/Hcf1 Antibody
Reactive Species	Human, Mouse
Description	Boster Bio Anti-HCFC1/Hcf1 Antibody (Catalog # A01729). Tested in IHC applications. This antibody reacts with Human, Mouse.
Application	IHC
Clonality	Polyclonal
Formulation	Rabbit IgG in phosphate buffered saline (without Mg2+ and Ca2+), pH 7.4, 150mM NaCl, 0.02% sodium azide and 50% glycerol.
Storage Instructions	Store at -20°C for one year. For short term storage and frequent use, store at 4°C for up to one month. Avoid repeated freeze-thaw cycles.
Host	Rabbit
Uniprot ID	P51610

Technical Details

Immunogen	Synthesized peptide derived from N-terminal of human HCFC1.
Predicted Reactive Species	Boar, Bovine, Canine, Golden Hamster
Cross Reactivity	No cross reactivity with other proteins.

Isotype	IgG
Form	Liquid
Concentration	1 mg/ml
Purification	The antibody was affinity-purified from rabbit antiserum by affinity-chromatography using epitope-specific immunogen.
Suggested Dilutions	<p>Dilute the sample so that the expected range of concentrations fall within the detection range of this kit.</p> <p>If the expected range of concentration is unknown, a pilot test should be conducted to decide the optimal dilution ratio for your samples.</p> <p>Some PubMed article(s) citing the expression level of this target are as follows:</p> <p>Boster Bio's internal QC testing used:</p> <p>Immunohistochemistry: 1:50~1:100</p>

Anti-HCFC1/Hcf1 Antibody (A01729) Images



Immunohistochemistry analysis of paraffin-embedded human breast carcinoma tissue, using HCFC1 antibody A01729.

Submit a product review to Biocompare.com

Submit a review of this product to Biocompare.com to receive a \$20 Amazon.com giftcard! Your reviews help your fellow scientists make the right decisions. Thank you for your contribution.



Anti-HCFC1/Hcf1 Antibody