

Anti-Cyclin D3 Ccnd3 Antibody

Catalog Number: A01744

About CCND3

Anti-Cyclin D3 antibody was designed, produced, and validated as part of the Joy Cappel Young Investigator Award (JCYIA). Cyclin D3 belongs to a highly conserved cyclin family, whose members are the ultimate recipients of oncogenic signals. Cyclin D3 is a key component of the cell cycle progression machinery and induces progression through the G1 phase of the cell cycle. Cyclin D3 is expressed in nearly all proliferating cells, and shows the most broad expression pattern of all three D-type (D1-D3) cyclins. Cyclin D3 is encoded from the 6p21 chromosome region and the protein is predominantly localized in the nucleus. Once induced, cyclin D3 binds and activates its associated cyclin-dependent kinases CDK4 and CDK6. Amplification of the cyclin D3 gene and overexpression of cyclin D3 protein is seen in several human cancers. A large number of human malignancies contain lesions in pathways impacting on cyclin D3. Abnormal expression of Cyclin D3 is believed to be a driving force in several human cancers. A possible role for cyclin D3 in the malignancies of the lymphoid system is suggested by the observations that cyclin D3 gene is rearranged in several neoplastic diseases such as diffuse large B cell lymphomas or multiple myelomas. Anti-Cyclin D3 is ideal for researchers interested in Cancer Research and Immunology research.

Overview

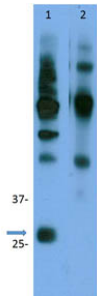
Product Name	Anti-Cyclin D3 Ccnd3 Antibody
Reactive Species	Human, Mouse
Description	Boster Bio Anti-Cyclin D3 Ccnd3 Antibody (Catalog # A01744). Tested in ELISA, Flow Cytometry, IHC, IP applications. This antibody reacts with Human, Mouse.
Conjugate	HRP
Application	ELISA, Flow Cytometry, IP, IHC
Clonality	Polyclonal
Formulation	0.02 M Potassium Phosphate, 0.15 M Sodium Chloride, pH 7.2, 0.01% (w/v) Sodium Azide
Storage Instructions	Store vial at -20°C prior to opening. Aliquot contents and freeze at -20°C or below for extended storage. Avoid cycles of freezing and thawing. Centrifuge product if not completely clear after standing at room temperature. This product is stable for several weeks at 4°C as an undiluted liquid. Dilute only prior to immediate use. Expiration date is one (1) year from date of opening. (Ship on dry ice.)
Host	Rabbit
Uniprot ID	P30282

Technical Details

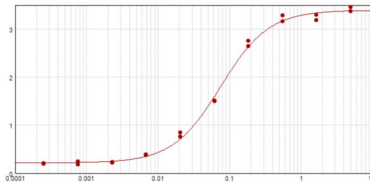
Immunogen	This affinity purified antibody was prepared from whole rabbit serum produced by repeated immunizations with a synthetic peptide corresponding to the C-terminal domain of mouse Cyclin D3 protein.
-----------	---

Predicted Reactive Species	Bovine, Mammalian
Isotype	IgG
Form	Liquid (sterile filtered)
Concentration	1.0 mg/ml by UV absorbance at 280 nm
Purification	Cyclin D3 affinity-purified antibody is directed against Cyclin D3 protein. The product was affinity purified from monospecific antiserum by immunoaffinity purification. A BLAST analysis was used to suggest reactivity with this protein from mouse, human, and bovine sources based on 100% homology for the immunogen sequence. Cross-reactivity with other sources has not been determined. No reactivity was observed against Cyclin D2.
Suggested Dilutions	<p>Dilute the sample so that the expected range of concentrations fall within the detection range of this kit.</p> <p>If the expected range of concentration is unknown, a pilot test should be conducted to decide the optimal dilution ratio for your samples.</p> <p>Some PubMed article(s) citing the expression level of this target are as follows:</p> <p>Boster Bio's internal QC testing used:</p> <p>ELISA: 1:1000 - 1:5000</p> <p>Flow Cytometry: 4µg/mL</p> <p>IHC: 4µg/mL</p> <p>IP: 5µg/mL</p> <p>WB: 1.0 ug/ml</p>

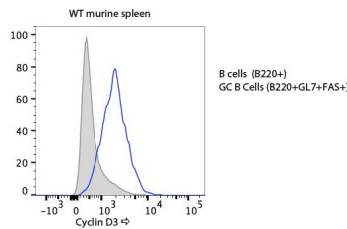
Anti-Cyclin D3 Ccnd3 Antibody (A01744) Images



Immunoprecipitation of Rabbit Anti-Cyclin D3. Lane 1: 5



ELISA results of purified Rabbit Anti-Cyclin D3 Antibody tested against BSA-conjugated peptide of cyclin D3 peptide. Each well was coated in duplicate with 0.1



Flow Cytometry of Rabbit anti-Cyclin D3 antibody. Cells: mouse B cells+, 14 days post immunization (NP-CGG). Anti-Cyclin D3-RPE antibody at 1:500 for 20 min at 4°C.

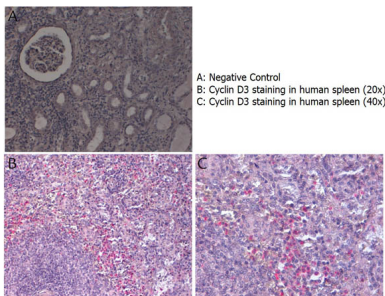


Figure 1. IHC analysis of Ccnd3 using anti-Ccnd3 antibody (A01744).

Ccnd3 was detected in paraffin-embedded section. Heat mediated antigen retrieval was performed in citrate buffer (pH6, epitope retrieval solution) for 20 mins. The tissue section was blocked with 10% goat serum. The tissue section was then incubated with 1ug/ml rabbit anti-Ccnd3 Antibody (A01744) overnight at 4°C. Biotinylated goat anti Rabbit IgG antibody was used as secondary antibody and incubated for 30 minutes at 37°C. The tissue section was developed using Streptavidin-Biotin-Complex (SABC)(Catalog # SA1022) with DAB as the chromogen.

Submit a product review to Biocompare.com

Submit a review of this product to Biocompare.com to receive a \$20 Amazon.com giftcard! Your reviews help your fellow scientists make the right decisions. Thank you for your contribution.



Anti-Cyclin D3 Ccnd3 Antibody