

Anti-Ezrin Antibody

Catalog Number: A01750

About EZR

Probably involved in connections of major cytoskeletal structures to the plasma membrane. In epithelial cells, required for the formation of microvilli and membrane ruffles on the apical pole. Along with PLEKHG6, required for normal macropinocytosis.

Lixin Zhu, Am J Physiol Cell Physiol, Jun 2005; 288: C1242 - C1254.

H.J. Spence, Hum. Mol. Genet., Aug 2004; 13: 1657 - 1668.

Vera Lúcia Bonilha, J. Cell Biol., Dec 1999; 147: 1533.

M Berryman, J. Cell Biol., Dec 1995; 131: 1231.

Overview

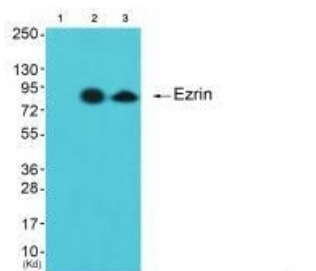
Product Name	Anti-Ezrin Antibody
Reactive Species	Human, Mouse, Rat
Description	Boster Bio Anti-Ezrin Antibody (Catalog # A01750). Tested in WB, IHC applications. This antibody reacts with Human, Mouse, Rat.
Application	IHC, WB
Clonality	Polyclonal
Formulation	Rabbit IgG in phosphate buffered saline (without Mg ²⁺ and Ca ²⁺), pH 7.4, 150mM NaCl, 0.02% sodium azide and 50% glycerol.
Storage Instructions	Store at -20°C for one year. For short term storage and frequent use, store at 4°C for up to one month. Avoid repeated freeze-thaw cycles.
Host	Rabbit
Uniprot ID	P15311

Technical Details

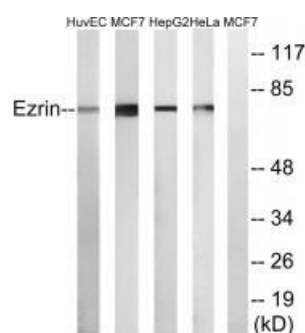
Immunogen	Synthesized peptide derived from human Ezrin.
Predicted Reactive Species	Boar, Bovine, Canine, Golden Hamster
Cross Reactivity	No cross reactivity with other proteins.
Isotype	IgG
Form	Liquid
Concentration	1 mg/ml

Purification	The antibody was affinity-purified from rabbit antiserum by affinity-chromatography using epitope-specific immunogen.
Suggested Dilutions	<p>Dilute the sample so that the expected range of concentrations fall within the detection range of this kit.</p> <p>If the expected range of concentration is unknown, a pilot test should be conducted to decide the optimal dilution ratio for your samples.</p> <p>Some PubMed article(s) citing the expression level of this target are as follows:</p> <p>Boster Bio's internal QC testing used:</p> <p>Western blotting: 1:500~1:3000</p> <p>Immunohistochemistry: 1:50~1:100</p>

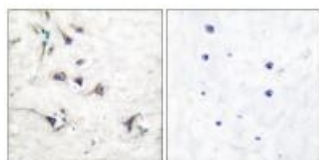
Anti-Ezrin Antibody (A01750) Images



Western blot analysis of extracts from cos-7 cells (Lane 2) and 3T3 cells (Lane 3), using Ezrin antibody A01750. The lane on the left is treated with synthesized peptide.



Western blot analysis of extracts from NIH/3T3 cells, using Ezrin antibody A01750.



Immunohistochemical analysis of paraffin-embedded human brain tissue using Ezrin antibody A01750.

Submit a product review to Biocompare.com

Submit a review of this product to Biocompare.com to receive a \$20 Amazon.com giftcard! Your reviews help your fellow scientists make the right decisions. Thank you for your contribution.



Anti-Ezrin Antibody