

Anti-Oct-1 POU2F1 Antibody

Catalog Number: A01766-2

About POU2F1

Transcription factor that binds to the octamer motif (5'-ATTGTCAT-3') and activates the promoters of the genes for some small nuclear RNAs (snRNA) and of genes such as those for histone H2B and immunoglobulins. Modulates transcription transactivation by NR3C1, AR and PGR By similarity. In case of human herpes simplex virus (HSV) infection, POU2F1 forms a multiprotein-DNA complex with the viral transactivator protein VP16 and HCFC1 thereby enabling the transcription of the viral immediate early genes.

Prefontaine G.G., Walther R., Giffin W. J. Biol. Chem. 274:26713-26719(1999)

Mahajan S.S., Wilson A.C. Mol. Cell. Biol. 20:919-928(2000)

Overview

Product Name	Anti-Oct-1 POU2F1 Antibody
Reactive Species	Human, Mouse
Description	Boster Bio Anti-Oct-1 POU2F1 Antibody (Catalog # A01766-2). Tested in WB, IF applications. This antibody reacts with Human, Mouse.
Application	IF, WB
Clonality	Polyclonal
Formulation	Supplied at 1.0mg/mL in phosphate buffered saline (without Mg ²⁺ and Ca ²⁺), pH 7.4, 150mM NaCl, 0.02% sodium azide and 50% glycerol.
Storage Instructions	Store at -20°C for one year. For short term storage and frequent use, store at 4°C for up to one month. Avoid repeated freeze-thaw cycles.
Host	Rabbit
Uniprot ID	P14859

Technical Details

Immunogen	Peptide sequence around aa.270~274(T-P-K-R-I) derived from Human Oct-1.
Predicted Reactive Species	Bovine, Canine, Equine, Goat, Guinea Pig, Rabbit, Yeast, Zebrafish
Isotype	IgG
Form	Liquid
Concentration	1 mg/ml
Purification	Antibodies were produced by immunizing rabbits with synthetic peptide and KLH conjugates.

Antibodies were purified by affinity-chromatography using epitope-specific peptide.

Suggested Dilutions

Dilute the sample so that the expected range of concentrations fall within the detection range of this kit.

If the expected range of concentration is unknown, a pilot test should be conducted to decide the optimal dilution ratio for your samples.

Some PubMed article(s) citing the expression level of this target are as follows:

Boster Bio's internal QC testing used:

Predicted MW: 90kd

Western blotting: 1:500~1:1000

Immunofluorescence: 1:100~1:200

Anti-Oct-1 POU2F1 Antibody (A01766-2) Images

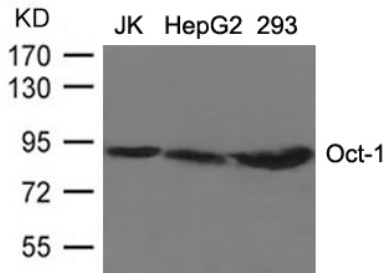
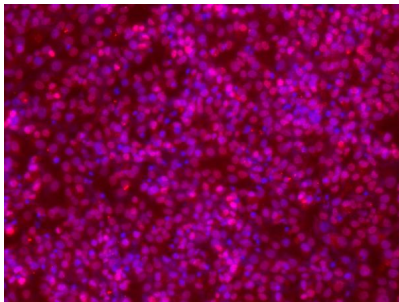


Figure 1. Western blot analysis of POU2F1 using anti-POU2F1 antibody (A01766-2).

Electrophoresis was performed on a 5-20% SDS-PAGE gel at 70V (Stacking gel) / 90V (Resolving gel) for 2-3 hours. The sample well of each lane was loaded with 50ug of sample under reducing conditions.

After Electrophoresis, proteins were transferred to a Nitrocellulose membrane at 150mA for 50-90 minutes. Blocked the membrane with 5% Non-fat Milk/ TBS for 1.5 hour at RT. The membrane was incubated with rabbit anti-POU2F1 antigen affinity purified polyclonal antibody (Catalog # A01766-2) at 0.5 ug/mL overnight at 4°C, then washed with TBS-0.1%Tween 3 times with 5 minutes each and probed with a goat anti-Rabbit IgG-HRP secondary antibody at a dilution of 1:10000 for 1.5 hour at RT. The signal is developed using an Enhanced Chemiluminescent detection (ECL) kit (Catalog # SA1022) with Tanon 5200 system. A specific band was detected for POU2F1.



Immunofluorescence staining of methanol-fixed NCI-h446 cells showing cytoplasmic staining using Oct-1 Antibody #A01766-2.

Submit a product review to Biocompare.com

Submit a review of this product to Biocompare.com to receive a \$20 Amazon.com giftcard! Your reviews help your fellow scientists make the right decisions. Thank you for your contribution.



Anti-Oct-1 POU2F1 Antibody