

## Anti-TFE3/Transcription Factor E3 Antibody

Catalog Number: A01791-1

### About TFE3

Transcription factor that specifically recognizes and binds E-box sequences (3'-CANNTG-5'). Efficient DNA-binding requires dimerization with itself or with another Mit/TFE family member such as TFEB or MITF. In association with TFEB, activates the expression of CD40L in T-cells, thereby playing a role in T-cell-dependent antibody responses in activated CD4+ T-cells and thymus-dependent humoral immunity. Specifically recognizes the MUE3 box, a subset of E-boxes, present in the immunoglobulin enhancer. It also binds very well to a USF/MLTF site.

Clark J., Lu Y.-J., Sidhar S.K., Parker C., Gill S. Oncogene 15:2233-2239(1997) Weterman M.A.J., Wilbrink M., Proc. Natl. Acad. Sci. U.S.A. 93:15294-15298(1996)

### Overview

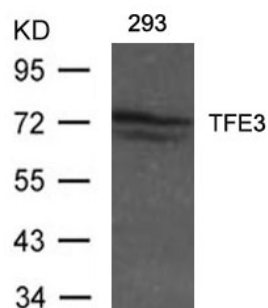
Product Name	Anti-TFE3/Transcription Factor E3 Antibody
Reactive Species	Human, Mouse, Rat
Description	Boster Bio Anti-TFE3/Transcription Factor E3 Antibody (Catalog # A01791-1). Tested in WB applications. This antibody reacts with Human, Mouse, Rat.
Application	WB
Clonality	Polyclonal
Formulation	Supplied at 1.0mg/mL in phosphate buffered saline (without Mg2+ and Ca2+), pH 7.4, 150mM NaCl, 0.02% sodium azide and 50% glycerol.
Storage Instructions	Store at -20°C for one year. For short term storage and frequent use, store at 4°C for up to one month. Avoid repeated freeze-thaw cycles.
Host	Rabbit
Uniprot ID	P19532

### Technical Details

Immunogen	Peptide sequence around aa.303~307 (L-D-V-Y-S) derived from Human TFE3.
Predicted Reactive Species	Boar, Bovine, Canine, Golden Hamster
Cross Reactivity	No cross reactivity with other proteins.
Isotype	IgG
Form	Liquid
Concentration	1 mg/ml

Purification	Antibodies were produced by immunizing rabbits with synthetic peptide and KLH conjugates. Antibodies were purified by affinity-chromatography using epitope-specific peptide.
Suggested Dilutions	Dilute the sample so that the expected range of concentrations fall within the detection range of this kit. If the expected range of concentration is unknown, a pilot test should be conducted to decide the optimal dilution ratio for your samples. Some PubMed article(s) citing the expression level of this target are as follows: Boster Bio's internal QC testing used: Predicted MW: 70kd Western blotting: 1:500~1:1000

## Anti-TFE3/Transcription Factor E3 Antibody (A01791-1) Images



Western blot analysis of extracts from 293 cells using TFE3 antibody A01791-1.

### Submit a product review to Biocompare.com

Submit a review of this product to Biocompare.com to receive a \$20 Amazon.com giftcard! Your reviews help your fellow scientists make the right decisions. Thank you for your contribution.



Anti-TFE3/Transcription Factor E3 Antibody