

## Anti-PARD3/Par3 Antibody

Catalog Number: A01897

### About PARD3

Adapter protein involved in asymmetrical cell division and cell polarization processes. Seems to play a central role in the formation of epithelial tight junctions. Targets the phosphatase PTEN to cell junctions By similarity. Association with PARD6B may prevent the interaction of PARD3 with F11R/JAM1, thereby preventing tight junction assembly. The PARD6-PARD3 complex links GTP-bound Rho small GTPases to atypical protein kinase C proteins. Required for establishment of neuronal polarity and normal axon formation in cultured hippocampal neurons.

Joberty G., Nat. Cell Biol. 2:531-539(2000).

Fang C.M., Cell Res. 11:223-229(2001).

Kohjima M., Biochem. Biophys. Res. Commun. 299:641-646(2002).

### Overview

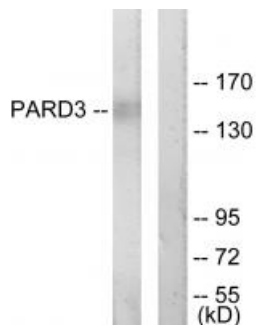
Product Name	Anti-PARD3/Par3 Antibody
Reactive Species	Human, Mouse, Rat
Description	Boster Bio Anti-PARD3/Par3 Antibody (Catalog # A01897). Tested in WB, IF applications. This antibody reacts with Human, Mouse, Rat.
Application	IF, WB
Clonality	Polyclonal
Formulation	Rabbit IgG in phosphate buffered saline (without Mg <sup>2+</sup> and Ca <sup>2+</sup> ), pH 7.4, 150mM NaCl, 0.02% sodium azide and 50% glycerol.
Storage Instructions	Store at -20°C for one year. For short term storage and frequent use, store at 4°C for up to one month. Avoid repeated freeze-thaw cycles.
Host	Rabbit
Uniprot ID	Q8TEW0

### Technical Details

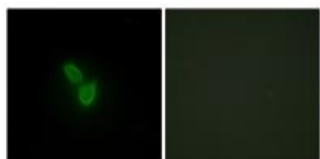
Immunogen	Synthesized peptide derived from internal of human PARD3.
Predicted Reactive Species	Boar, Bovine, Canine, Golden Hamster
Cross Reactivity	No cross reactivity with other proteins.
Isotype	IgG
Form	Liquid

Concentration	1 mg/ml
Purification	The antibody was affinity-purified from rabbit antiserum by affinity-chromatography using epitope-specific immunogen.
Suggested Dilutions	<p>Dilute the sample so that the expected range of concentrations fall within the detection range of this kit.</p> <p>If the expected range of concentration is unknown, a pilot test should be conducted to decide the optimal dilution ratio for your samples.</p> <p>Some PubMed article(s) citing the expression level of this target are as follows:</p> <p>Boster Bio's internal QC testing used:</p> <p>Western blotting: 1:500~1:3000</p> <p>Immunofluorescence: 1:100~1:500</p>

## Anti-PARD3/Par3 Antibody (A01897) Images



Western blot analysis of extracts from COLO205 cells, using PARD3 antibody A01897.



Immunofluorescence analysis of HepG2 cells, using PARD3 antibody A01897.

### Submit a product review to Biocompare.com

Submit a review of this product to Biocompare.com to receive a \$20 Amazon.com giftcard! Your reviews help your fellow scientists make the right decisions. Thank you for your contribution.



Anti-PARD3/Par3 Antibody