

## Anti-Protein C inhibitor/SERPINA5 Antibody Picoband™

Catalog Number: A01916-1

### About SERPINA5

Protein C inhibitor (PCI), also known as SERPINA5, is serine protease inhibitor of serpin type that is found in most tissues and fluids, including blood plasma, seminal plasma and urine of human. It is a 52kD glycoprotein and belongs to serine protease inhibitor (Serpine) super family of protein. This family member is a glycoprotein that can inhibit several serine proteases, including protein C and various plasminogen activators and kallikreins, and it thus plays diverse roles in hemostasis and thrombosis in multiple organs. This gene is mapped on the q arm of chromosome 14.

### Overview

Product Name	Anti-Protein C inhibitor/SERPINA5 Antibody Picoband™
Reactive Species	Human, Mouse, Rat
Description	Boster Bio Anti-Protein C inhibitor/SERPINA5 Antibody Picoband™ catalog # A01916-1. Tested in IHC, WB applications. This antibody reacts with Human, Mouse, Rat.
Application	IHC, WB
Clonality	Polyclonal
Formulation	Each vial contains 4mg Trehalose, 0.9mg NaCl, 0.2mg Na2HPO4, 0.05mg NaN3.
Storage Instructions	Store at -20°C for one year from date of receipt. After reconstitution, at 4°C for one month. It can also be aliquotted and stored frozen at -20°C for six months. Avoid repeated freeze-thaw cycles.
Host	Rabbit
Uniprot ID	P05154

### Technical Details

Immunogen	E.coli-derived human SERPINA5 recombinant protein (Position: S86-P406). Human SERPINA5 shares 66% amino acid (aa) sequence identity with mouse SERPINA5.
Predicted Reactive Species	Human
Recommended Detection Systems	Boster recommends Enhanced Chemiluminescent Kit with anti-Rabbit IgG (EK1002) for Western blot, and HRP Conjugated anti-Rabbit IgG Super Vision Assay Kit (SV0002-1) for IHC(P).
Cross Reactivity	No cross-reactivity with other proteins
Isotype	Rabbit IgG
Form	Lyophilized
Concentration	Adding 0.2 ml of distilled water will yield a concentration of 500 ug/ml.

Purification	Immunogen affinity purified.
Suggested Dilutions	<p>Dilute the sample so that the expected range of concentrations fall within the detection range of this kit.</p> <p>If the expected range of concentration is unknown, a pilot test should be conducted to decide the optimal dilution ratio for your samples.</p> <p>Some PubMed article(s) citing the expression level of this target are as follows:</p> <p>Boster Bio's internal QC testing used:</p> <p>Immunohistochemistry (Paraffin-embedded Section), 0.5-1ug/ml, Mouse, Rat, Human, By Heat</p> <p>Western blot, 0.1-0.5ug/ml, Human, Rat</p>

## Anti-Protein C inhibitor/SERPINA5 Antibody Picoband™ (A01916-1) Images



Figure 1. Western blot analysis of SERPINA5 using anti-SERPINA5 antibody (A01916-1). Electrophoresis was performed on a 5-20% SDS-PAGE gel at 70V (Stacking gel) / 90V (Resolving gel) for 2-3 hours. The sample well of each lane was loaded with 30 ug of sample under reducing conditions.

Lane 1: rat liver tissue lysates,

Lane 2: human SKOV3 whole cell lysates.

After electrophoresis, proteins were transferred to a nitrocellulose membrane at 150 mA for 50-90 minutes. Blocked the membrane with 5% non-fat milk/TBS for 1.5 hour at RT. The membrane was incubated with rabbit anti-SERPINA5 antigen affinity purified polyclonal antibody (Catalog # A01916-1) at 0.5 ug/mL overnight at 4°C, then washed with TBS-0.1%Tween 3 times with 5 minutes each and probed with a goat anti-rabbit IgG-HRP secondary antibody at a dilution of 1:5000 for 1.5 hour at RT. The signal is developed using an Enhanced Chemiluminescent detection (ECL) kit (Catalog # EK1002) with Tanon 5200 system. A specific band was detected for SERPINA5 at approximately 46 kDa. The expected band size for SERPINA5 is at 46KD.

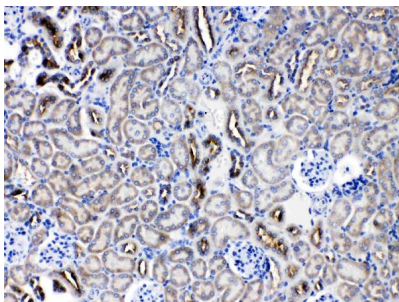


Figure 2. IHC analysis of SERPINA5 using anti-SERPINA5 antibody (A01916-1).

SERPINA5 was detected in a paraffin-embedded section of mouse kidney tissue. Heat mediated antigen retrieval was performed in EDTA buffer (pH 8.0, epitope retrieval solution). The tissue section was blocked with 10% goat serum. The tissue section was then incubated with 1 ug/ml rabbit anti-SERPINA5 Antibody (A01916-1) overnight at 4°C. Biotinylated goat anti-rabbit IgG was used as secondary antibody and incubated for 30 minutes at 37°C. The tissue section was developed using Streptavidin-Biotin-Complex (SABC) (Catalog # SA1022) with DAB as the chromogen.

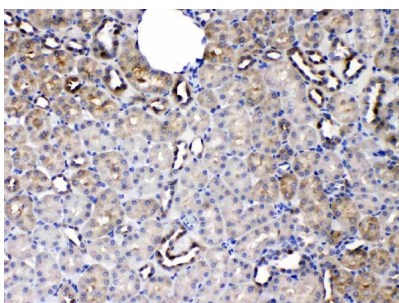


Figure 3. IHC analysis of SERPINA5 using anti-SERPINA5 antibody (A01916-1).

SERPINA5 was detected in a paraffin-embedded section of rat kidney tissue. Heat mediated antigen retrieval was performed in EDTA buffer (pH 8.0, epitope retrieval solution). The tissue section was blocked with 10% goat serum. The tissue section was then incubated with 1 ug/ml rabbit anti-SERPINA5 Antibody (A01916-1) overnight at 4°C. Biotinylated goat anti-rabbit IgG was used as secondary antibody and incubated for 30 minutes at 37°C. The tissue section was developed using Streptavidin-Biotin-Complex (SABC) (Catalog # SA1022) with DAB as the chromogen.

Submit a review of this product to Biocompare.com to receive a \$20 Amazon.com giftcard! Your reviews help your fellow scientists make the right decisions. Thank you for your contribution.



Anti-Protein C inhibitor/SERPINA5 Antibody <sup>™</sup>