

## Anti-Cul5/Cullin 5 Antibody

Catalog Number: A01925

### About CUL5

Cullins assemble a potentially large number of ubiquitin ligases by binding to the RING protein ROC1 to catalyse polyubiquitination, as well as binding to various specificity factors to recruit substrates. Cullin 5 is a component of E3 ubiquitin ligase complexes, which mediate the ubiquitination and subsequent proteasomal degradation of target proteins. Cullin 5 seems to be involved proteasomal degradation of p53/TP53 stimulated by adenovirus E1B-55 kDa protein. Cullin 5 may form a cell surface vasopressin receptor. Cullin 5 is part of a E3 ubiquitin ligase complex with elongin BC complex (TCEB1 and TCEB2), RBX1 and MUF1, complexes with elongin BC complex (TCEB1 and TCEB2), RXB1 and TCEB3 or SOCS1 or WSB1; elongin BC complex (TCEB1 and TCEB2), RBX1 and VHL; elongin BC complex (TCEB1 and TCEB2), RBX1, adenovirus type 5 E1B-55kDa protein and adenovirus type 5 E4-orf6. Cullin 5 Interacts with RBX1 and RNF7.

### Overview

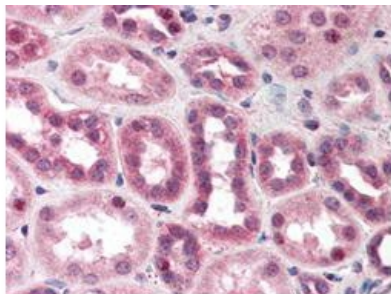
Product Name	Anti-Cul5/Cullin 5 Antibody
Reactive Species	Human
Description	Boster Bio Anti-Cul5/Cullin 5 Antibody (Catalog # A01925). Tested in IHC, IP, WB applications. This antibody reacts with Human.
Application	IP, IHC, WB
Clonality	Polyclonal
Formulation	0.01% (w/v) Sodium Azide
Storage Instructions	Store vial at -20°C prior to opening. Aliquot contents and freeze at -20°C or below for extended storage. Avoid cycles of freezing and thawing. Centrifuge product if not completely clear after standing at room temperature. This product is stable for several weeks at 4°C as an undiluted liquid. Dilute only prior to immediate use. Expiration date is one (1) year from date of opening. (Ship on dry ice.)
Host	Rabbit
Uniprot ID	Q93034

### Technical Details

Immunogen	This antibody was prepared from whole rabbit serum produced by repeated immunizations with a synthetic peptide corresponding to an N-Terminal region near amino acids 1-25 of Human Cul5 (N-terminus) coupled to KLH.
Predicted Reactive Species	Boar, Bovine, Canine, Golden Hamster
Isotype	Antiserum
Form	Liquid (sterile filtered)

Concentration	85 mg/mL by Refractometry
Purification	This product is monospecific antiserum processed by delipidation and defibrination followed by sterile filtration. This product reacts with human Cullin 5. Cross-reactivity is expected against mouse Cul5 based on a high degree of sequence homology. Cross-reactivity with other human cullins may occur.
Suggested Dilutions	<p>Dilute the sample so that the expected range of concentrations fall within the detection range of this kit.</p> <p>If the expected range of concentration is unknown, a pilot test should be conducted to decide the optimal dilution ratio for your samples.</p> <p>Some PubMed article(s) citing the expression level of this target are as follows:</p> <p>Boster Bio's internal QC testing used:</p> <p>ELISA: 1:2,000 - 1:10,000</p> <p>IHC: User optimized</p> <p>IP: User optimized</p> <p>WB: 1:500 - 1:1,000</p>

## Anti-Cul5/Cullin 5 Antibody (A01925) Images



Cul5 was detected in paraffin-embedded sections of human kidney tissues using rabbit anti-Cul5 Antiserum, not purified polyclonal antibody (Catalog # A01925) at 1:500. The immunohistochemical section was developed using SABC method (Catalog # SA1022).

## Submit a product review to Biocompare.com

Submit a review of this product to Biocompare.com to receive a \$20 Amazon.com giftcard! Your reviews help your fellow scientists make the right decisions. Thank you for your contribution.



Anti-Cul5/Cullin 5 Antibody