

## Anti-Gab1(Phospho-Tyr627) Antibody

Catalog Number: A01989

### About GAB1

The protein encoded by Gab1 is a member of the IRS1-like multisubstrate docking protein family. It is an important mediator of branching tubulogenesis and plays a central role in cellular growth response, transformation and apoptosis. Two transcript variants encoding different isoforms have been found for this gene.

Anders Kallin, et al. (2004) J. Biol. Chem ; 279: 17897 - 17904.

Hideto Kameda, et al. (2001) Cell Growth Differ ; 12: 307.

Masaki Osawa, et al. (2002) J. Cell Biol ; 158: 773.

### Overview

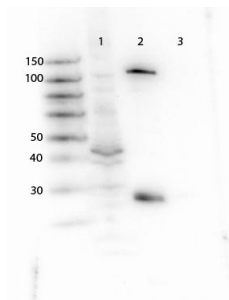
Product Name	Anti-Gab1(Phospho-Tyr627) Antibody
Reactive Species	Human, Mouse
Description	Boster Bio Anti-Gab1(Phospho-Tyr627) Antibody (Catalog # A01989). Tested in WB, IF applications. This antibody reacts with Human, Mouse.
Application	IF, WB
Clonality	Polyclonal
Formulation	Supplied at 1.0mg/mL in phosphate buffered saline (without Mg <sup>2+</sup> and Ca <sup>2+</sup> ), pH 7.4, 150mM NaCl, 0.02% sodium azide and 50% glycerol.
Storage Instructions	Store at -20°C for one year. For short term storage and frequent use, store at 4°C for up to one month. Avoid repeated freeze-thaw cycles.
Host	Rabbit
Uniprot ID	Q13480

### Technical Details

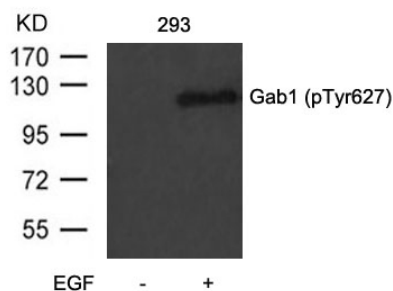
Immunogen	Peptide sequence around phosphorylation site of tyrosine 627 (V-E-Y(p)-L-D) derived from Human Gab1.
Predicted Reactive Species	Boar, Bovine, Canine, Golden Hamster
Form	Liquid
Concentration	1 mg/ml
Purification	Antibodies were produced by immunizing rabbits with synthetic phosphopeptide and KLH conjugates. Antibodies were purified by affinity-chromatography using epitope-specific

	phosphopeptide. Non-phospho specific antibodies were removed by chromatography using non-phosphopeptide.
Suggested Dilutions	<p>Dilute the sample so that the expected range of concentrations fall within the detection range of this kit.</p> <p>If the expected range of concentration is unknown, a pilot test should be conducted to decide the optimal dilution ratio for your samples.</p> <p>Some PubMed article(s) citing the expression level of this target are as follows:</p> <p>Boster Bio's internal QC testing used:</p> <p>Predicted MW: 110kd</p> <p>Western blotting: 1:500~1:1000</p> <p>Immunofluorescence: 1:100~1:200</p>

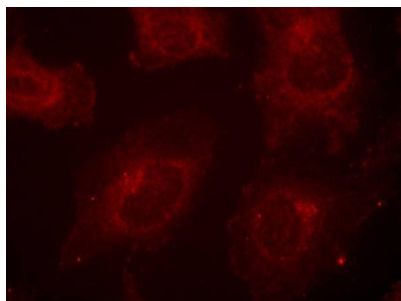
## Anti-Gab1(Phospho-Tyr627) Antibody (A01989) Images



Western blot analysis of GAB1 expression in MCF7 lysate (lane 1), GAB1 Protein (lane 2) and GST protein (lane 3). GAB1 at 130KD was detected using rabbit anti-GAB1 polyclonal antibody (Catalog # A01989) at 1ug/mL. The blot was developed using chemiluminescence (ECL) method (Catalog # EK1002).



Western blot analysis of extracts from 293 cells untreated or treated with EGF using Gab1(Phospho-Tyr627) antibody A01989.



Immunofluorescence staining of methanol-fixed Hela cells using Gab1(Phospho-Tyr627) antibody A01989.

## Submit a product review to Biocompare.com

Submit a review of this product to Biocompare.com to receive a \$20 Amazon.com giftcard! Your reviews help your fellow scientists make the right decisions. Thank you for your contribution.



Anti-Gab1(Phospho-Tyr627) Antibody