

Anti-MADD Antibody

Catalog Number: A02030

About MADD

Plays a significant role in regulating cell proliferation, survival and death through alternative mRNA splicing. Isoform 5 shows increased cell proliferation and isoform 2 shows decreased. Converts GDP-bound inactive form of RAB3A, RAB3C and RAB3D to the GTP-bound active forms. Component of the TNFRSF1A signaling complex: MADD links TNFRSF1A with MAP kinase activation. Plays an important regulatory role in physiological cell death (TNF-alpha-induced, caspase-mediated apoptosis); isoform 1 is susceptible to inducing apoptosis, isoform 5 is resistant and isoform 3 and isoform 4 have no effect.

Chow V.T.K., DNA Seq. 6:263-273(1996).

Schievella A.R., J. Biol. Chem. 272:12069-12075(1997).

Chow V.T.K., Genome 41:543-552(1998).

Overview

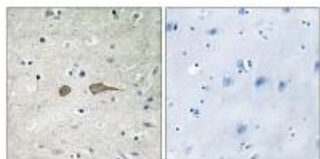
Product Name	Anti-MADD Antibody
Reactive Species	Human, Mouse, Rat
Description	Boster Bio Anti-MADD Antibody (Catalog # A02030). Tested in WB, IHC, IF applications. This antibody reacts with Human, Mouse, Rat.
Application	IF, IHC, WB
Clonality	Polyclonal
Formulation	Rabbit IgG in phosphate buffered saline (without Mg ²⁺ and Ca ²⁺), pH 7.4, 150mM NaCl, 0.02% sodium azide and 50% glycerol.
Storage Instructions	Store at -20°C for one year. For short term storage and frequent use, store at 4°C for up to one month. Avoid repeated freeze-thaw cycles.
Host	Rabbit
Uniprot ID	Q8WYG6

Technical Details

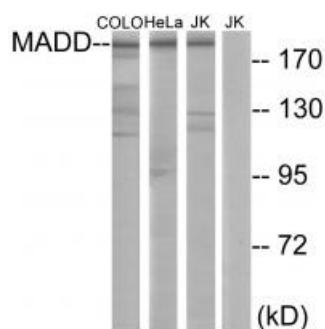
Immunogen	Synthesized peptide derived from internal of human MADD.
Predicted Reactive Species	Boar, Bovine, Canine, Golden Hamster
Isotype	IgG
Form	Liquid
Concentration	1 mg/ml

Purification	The antibody was affinity-purified from rabbit antiserum by affinity-chromatography using epitope-specific immunogen.
Suggested Dilutions	<p>Dilute the sample so that the expected range of concentrations fall within the detection range of this kit.</p> <p>If the expected range of concentration is unknown, a pilot test should be conducted to decide the optimal dilution ratio for your samples.</p> <p>Some PubMed article(s) citing the expression level of this target are as follows:</p> <p>Boster Bio's internal QC testing used:</p> <p>Western blotting: 1:500~1:3000</p> <p>Immunohistochemistry: 1:50~1:100</p> <p>Immunofluorescence: 1:100~1:500</p>

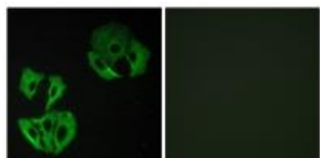
Anti-MADD Antibody (A02030) Images



Immunohistochemistry analysis of paraffin-embedded human brain tissue using MADD antibody A02030.



Western blot analysis of extracts from COLO cells, HeLa cells and Jurkat cells, using MADD antibody A02030.



Immunofluorescence analysis of A549 cells, using MADD antibody A02030.

Submit a product review to Biocompare.com

Submit a review of this product to Biocompare.com to receive a \$20 Amazon.com giftcard! Your reviews help your fellow scientists make the right decisions. Thank you for your contribution.



Anti-MADD Antibody