

Anti-PHOX2B Antibody

Catalog Number: A02221

About PHOX2B

PHOX2A and PHOX2B (Paired mesoderm homeobox protein) are closely related, paired-homeodomain transcription factors that function as determinants of the noradrenergic phenotype during embryogenesis. PHOX2 proteins are crucial for the regulation of endogenous hydroxylases in neural crest cells and promote sympathetic neuron generation. Human PHOX2B contains one DNA binding homeobox domain and is required for the differentiation of all central and nonperipheral noradrenergic centers in the brain. In contrast, PHOX2A controls only the differentiation of the main noradrenergic center of the brain. Regulation of PHOX2 may have therapeutic utility in aging or disorders involving degeneration of noradrenergic neurons.

Overview

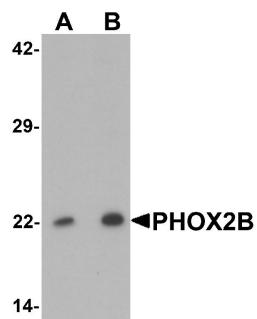
Product Name	Anti-PHOX2B Antibody
Reactive Species	Human, Mouse, Rat
Description	Boster Bio Anti-PHOX2B Antibody (Catalog # A02221). Tested in ELISA, WB applications. This antibody reacts with Human, Mouse, Rat.
Application	ELISA, WB
Clonality	Polyclonal Clone: SK7
Formulation	PHOX2B Antibody is supplied in PBS containing 0.02% sodium azide.
Storage Instructions	PHOX2B antibody can be stored at 4°C for three months and -20°C, stable for up to one year. Avoid repeated freeze-thaw cycles. Antibodies should not be exposed to prolonged high temperatures.
Host	Rabbit
Uniprot ID	Q99453

Technical Details

Immunogen	PHOX2B antibody was raised against a 15 amino acid synthetic peptide near the center of human PHOX2B. The immunogen is located within amino acids 130 - 180 of PHOX2B.
Predicted Reactive Species	Bovine, Chicken
Cross Reactivity	PHOX2B antibody is predicted to not cross-react with other paired homeobox family members.
Isotype	IgG
Form	Liquid
Concentration	1 mg/mL

Purification	PHOX2B Antibody is affinity chromatography purified via peptide column.
Suggested Dilutions	<p>Dilute the sample so that the expected range of concentrations fall within the detection range of this kit.</p> <p>If the expected range of concentration is unknown, a pilot test should be conducted to decide the optimal dilution ratio for your samples.</p> <p>Some PubMed article(s) citing the expression level of this target are as follows:</p> <p>Boster Bio's internal QC testing used:</p> <p>PHOX2B antibody can be used for detection of PHOX2B by Western blot at 1 - 2 ug/mL.</p> <p>Antibody validated: Western Blot in human samples. All other applications and species not yet tested. Optimal dilutions for each application should be determined by the researcher.</p>

Anti-PHOX2B Antibody (A02221) Images



Submit a product review to Biocompare.com

Submit a review of this product to Biocompare.com to receive a \$20 Amazon.com giftcard! Your reviews help your fellow scientists make the right decisions. Thank you for your contribution.



Anti-PHOX2B Antibody