

## Anti-Hemopexin/HPX Antibody Picoband™

Catalog Number: A02237-2

### About HPX

Hemopexin (or haemopexin; Hpx; Hx), also known as beta-1B-glycoprotein, is a glycoprotein that in humans is encoded by the HPX gene and belongs to hemopexin family of proteins. This gene encodes a plasma glycoprotein that binds heme with high affinity. The encoded protein is an acute phase protein that transports heme from the plasma to the liver and may be involved in protecting cells from oxidative stress.

### Overview

Product Name	Anti-Hemopexin/HPX Antibody Picoband™
Reactive Species	Human, Mouse, Rat
Description	Boster Bio Anti-Hemopexin/HPX Antibody Picoband™ catalog # A02237-2. Tested in ELISA, WB applications. This antibody reacts with Human, Mouse, Rat.
Application	ELISA, WB
Clonality	Polyclonal
Formulation	Each vial contains 4 mg Trehalose, 0.9 mg NaCl, 0.2 mg Na <sub>2</sub> HPO <sub>4</sub> .
Storage Instructions	At -20°C for one year from date of receipt. After reconstitution, at 4°C for one month. It can also be aliquotted and stored frozen at -20°C for six months. Avoid repeated freezing and thawing.
Host	Rabbit
Uniprot ID	P02790

### Technical Details

Immunogen	E.coli-derived human Hemopexin/HPX recombinant protein (Position: V97-A447).
Predicted Reactive Species	Human
Recommended Detection Systems	Boster recommends Enhanced Chemiluminescent Kit with anti-Rabbit IgG (EK1002) for Western blot.
Cross Reactivity	No cross-reactivity with other proteins.
Isotype	Rabbit IgG
Form	Lyophilized
Concentration	Adding 0.2 ml of distilled water will yield a concentration of 500 ug/ml.
Purification	Immunogen affinity purified.

**Suggested Dilutions**

Dilute the sample so that the expected range of concentrations fall within the detection range of this kit.

If the expected range of concentration is unknown, a pilot test should be conducted to decide the optimal dilution ratio for your samples.

Some PubMed article(s) citing the expression level of this target are as follows:

Boster Bio's internal QC testing used:

Western blot, 0.25-0.5 ug/ml, Human, Mouse, Rat

Direct ELISA, 0.1-0.5 ug/ml, Human

## Anti-Hemopexin/HPX Antibody Picoband™ (A02237-2) Images

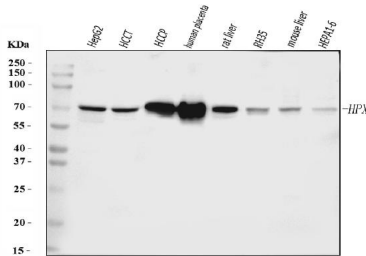


Figure 1. Western blot analysis of Hemopexin/HPX using anti-Hemopexin/HPX antibody (A02237-2).

Electrophoresis was performed on a 5-20% SDS-PAGE gel at 70V (Stacking gel) / 90V (Resolving gel) for 2-3 hours. The sample well of each lane was loaded with 30 ug of sample under reducing conditions.

Lane 1: human HepG2 whole cell lysates,

Lane 2: human HCCT tissue lysates,

Lane 3: human HCCP tissue lysates,

Lane 4: human placenta tissue lysates,

Lane 5: rat liver tissue lysates,

Lane 6: rat RH35 whole cell lysates,

Lane 7: mouse liver tissue lysates,

Lane 8: mouse HEPA1-6 whole cell lysates.

After electrophoresis, proteins were transferred to a nitrocellulose membrane at 150 mA for 50-90 minutes.

Blocked the membrane with 5% non-fat milk/TBS for 1.5 hour at RT. The membrane was incubated with rabbit anti-Hemopexin/HPX antigen affinity purified polyclonal antibody (Catalog # A02237-2) at 0.5 ug/mL overnight at 4°C, then washed with TBS-0.1%Tween 3 times with 5 minutes each and probed with a goat anti-rabbit IgG-HRP secondary antibody at a dilution of 1:5000 for 1.5 hour at RT. The signal is developed using an Enhanced Chemiluminescent detection (ECL) kit (Catalog # EK1002) with Tanon 5200 system. A specific band was detected for Hemopexin/HPX at approximately 72 kDa. The expected band size for Hemopexin/HPX is at 72 kDa.

## Submit a product review to Biocompare.com

Submit a review of this product to Biocompare.com to receive a \$20 Amazon.com giftcard! Your reviews help your fellow scientists make the right decisions. Thank you for your contribution.



Anti-Hemopexin/HPX Antibody