

Anti-COLLAGEN Type V COL5A1 Antibody

Catalog Number: A02283

About COL5A1-COL5A3

Collagens are highly conserved throughout evolution and are characterized by an uninterrupted "Glycine-X-Y" triplet repeat that is a necessary part of the triple helical structure. For these reasons, it is often extremely difficult to generate antibodies with specificities to collagens. The development of 'type' specific antibodies is dependent on NON-DENATURED three-dimensional epitopes. Boster extensively purifies collagens for immunization from human and bovine placenta and cartilage by limited pepsin digestion and selective salt precipitation. This preparation results in a native conformation of the protein. Antibodies are isolated from rabbit antiserum and are extensively cross-adsorbed by immunoaffinity purification to produce 'type' specific antibodies. Greatly diminished reactivity and selectivity of these antibodies will result if denaturing and reducing conditions are used for SDS-PAGE and immunoblotting.

Overview

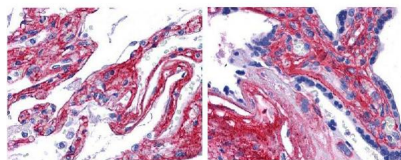
Product Name	Anti-COLLAGEN Type V COL5A1 Antibody
Reactive Species	Bovine, Human
Description	Boster Bio Anti-COLLAGEN Type V COL5A1 Antibody (Catalog # A02283). Tested in Dot blot, IHC applications. This antibody reacts with Human, Bovine.
Application	Dot blot, IHC
Clonality	Polyclonal
Formulation	0.02 M Potassium Phosphate, 0.15 M Sodium Chloride, pH 7.2, 0.01% (w/v) Sodium Azide
Storage Instructions	Store vial at 4°C prior to opening. This product is stable at 4°C as an undiluted liquid. Dilute only prior to immediate use. For extended storage, mix with an equal volume of glycerol, aliquot contents and freeze at -20°C or below. Avoid cycles of freezing and thawing. Expiration date is one (1) year from date of opening. (Ship on dry ice.)
Host	Rabbit
Uniprot ID	P05997

Technical Details

Immunogen	Collagen Type V from human and bovine placenta
Predicted Reactive Species	Bovine, Pufferfish, Zebrafish
Isotype	IgG
Form	Liquid (sterile filtered)
Concentration	1.0 mg/mL by UV absorbance at 280 nm

Purification	Anti-Collagen Type V has been prepared by immunoaffinity chromatography using immobilized antigens followed by extensive cross-adsorption against other collagens, human serum proteins and non-collagen extracellular matrix proteins to remove any unwanted specificities. Some class specific anti-collagens may be specific for three-dimensional epitopes which may result in diminished reactivity with denatured collagen or formalin-fixed, paraffin embedded tissues. This antibody reacts with most mammalian Type V collagens and has negligible cross-reactivity with Type I, II, III, IV or VI collagens. Non-specific cross reaction of anti-collagen antibodies with other human serum proteins or non-collagen extracellular matrix proteins is negligible.
Suggested Dilutions	<p>Dilute the sample so that the expected range of concentrations fall within the detection range of this kit.</p> <p>If the expected range of concentration is unknown, a pilot test should be conducted to decide the optimal dilution ratio for your samples.</p> <p>Some PubMed article(s) citing the expression level of this target are as follows:</p> <p>Boster Bio's internal QC testing used:</p> <p>ELISA: 1:5,000 - 1:50,000</p> <p>IHC: 1:50 - 1:200</p> <p>IP: 1:100</p> <p>WB: 1:1,000 - 1:10,000</p>

Anti-COLLAGEN Type V COL5A1 Antibody (A02283) Images



Anti collagen V antibody (600-401-107 Lot 22063, 1:200, 45 min RT) showed strong staining in FFPE sections of human lung (left) with strong staining within alveoli, vessels, and in connective tissue spaces; and placenta (right) with strong staining observed in stromal and connective tissue spaces and vessel walls. Slides were steamed in 0.0LifeSpan Biosciences, Seattle, WA

Submit a product review to Biocompare.com

Submit a review of this product to Biocompare.com to receive a \$20 Amazon.com giftcard! Your reviews help your fellow scientists make the right decisions. Thank you for your contribution.



Anti-COLLAGEN Type V COL5A1 Antibody