

Anti-Synaptotagmin 1 (Ab-309) SYT1 Antibody

Catalog Number: A02314

About SYT1

The synaptotagmins are integral membrane proteins of synaptic vesicles thought to serve as Ca²⁺ sensors in the process of vesicular trafficking and exocytosis. Calcium binding to synaptotagmin I participates in triggering neurotransmitter release at the synapse

Gustavsson N, et al. Proc Natl Acad Sci U S A. 2008 Mar 11; 105(10):3992-7.

Cnops L, et al. Cereb Cortex. 2008 May; 18(5):1221-31.

Lynch KL, et al. Mol Biol Cell. 2007 Dec; 18(12):4957-68.

Overview

Product Name	Anti-Synaptotagmin 1 (Ab-309) SYT1 Antibody
Reactive Species	Human, Mouse, Rat
Description	Boster Bio Anti-Synaptotagmin 1 (Ab-309) SYT1 Antibody (Catalog # A02314). Tested in WB, IF applications. This antibody reacts with Human, Mouse, Rat.
Application	IF, WB
Clonality	Polyclonal 1G11
Formulation	Supplied at 1.0mg/mL in phosphate buffered saline (without Mg ²⁺ and Ca ²⁺), pH 7.4, 150mM NaCl, 0.02% sodium azide and 50% glycerol.
Storage Instructions	Store at -20°C for one year. For short term storage and frequent use, store at 4°C for up to one month. Avoid repeated freeze-thaw cycles.
Host	Rabbit
Uniprot ID	P21579

Technical Details

Immunogen	Peptide sequence around aa.307~311 (G-L-S-D-P) derived from Human Synaptotagmin 1.
Predicted Reactive Species	Canine, Equine
Isotype	IgG
Form	Liquid
Concentration	1 mg/ml
Purification	Antibodies were produced by immunizing rabbits with synthetic peptide and KLH conjugates. Antibodies were purified by affinity-chromatography using epitope-specific peptide.

Suggested Dilutions

Dilute the sample so that the expected range of concentrations fall within the detection range of this kit.

If the expected range of concentration is unknown, a pilot test should be conducted to decide the optimal dilution ratio for your samples.

Some PubMed article(s) citing the expression level of this target are as follows:

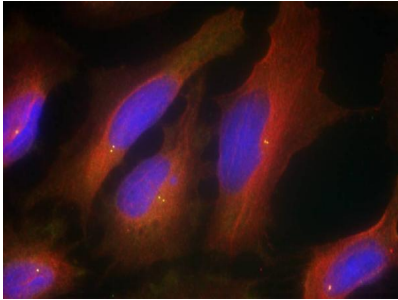
Boster Bio's internal QC testing used:

Predicted MW: 60-65kd

Western blotting: 1:500~1:1000

Immunofluorescence: 1:100~1:200

Anti-Synaptotagmin 1 (Ab-309) SYT1 Antibody (A02314) Images



Immunofluorescence staining of methanol-fixed HeLa cells using Synaptotagmin 1 (Ab-309) Antibody #A02314.

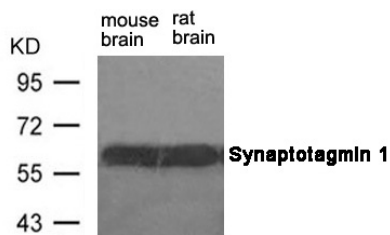


Figure 2. Western blot analysis of SYT1 using anti-SYT1 antibody (A02314). Electrophoresis was performed on a 5-20% SDS-PAGE gel at 70V (Stacking gel) / 90V (Resolving gel) for 2-3 hours. The sample well of each lane was loaded with 50ug of sample under reducing conditions. After Electrophoresis, proteins were transferred to a Nitrocellulose membrane at 150mA for 50-90 minutes. Blocked the membrane with 5% Non-fat Milk/ TBS for 1.5 hour at RT. The membrane was incubated with rabbit anti-SYT1 antigen affinity purified polyclonal antibody (Catalog # A02314) at 0.5 ug/mL overnight at 4°C, then washed with TBS-0.1%Tween 3 times with 5 minutes each and probed with a goat anti-Rabbit IgG-HRP secondary antibody at a dilution of 1:10000 for 1.5 hour at RT. The signal is developed using an Enhanced Chemiluminescent detection (ECL) kit (Catalog # SA1022) with Tanon 5200 system. A specific band was detected for SYT1.

Submit a product review to Biocompare.com

Submit a review of this product to Biocompare.com to receive a \$20 Amazon.com giftcard! Your reviews help your fellow scientists make the right decisions. Thank you for your contribution.



Anti-Synaptotagmin 1 (Ab-309) SYT1 Antibody