

Anti-CK2a CSNK2A1 Antibody

Catalog Number: A02398

About CSNK2A1

Casein kinases are operationally defined by their preferential utilization of acidic proteins such as caseins as substrates. The α and α' chains contain the catalytic site. Participates in Wnt signaling. CK2 phosphorylates 'Ser-392' of p53/TP53 following UV irradiation.

Keller D.M., Zeng X., et al., Mol. Cell 7:283-292(2001)

Keller D.M., Lu H. et al., J. Biol. Chem. 277:50206-50213(2002)

Trembley J.H., Tatsumi S., et al., Mol. Cell. Biol. 25:1446-1457(2005)

Niefind K., Guerra B., et al., Acta Crystallogr. D 56:1680-1684(2000)

Overview

Product Name	Anti-CK2a CSNK2A1 Antibody
Reactive Species	Human, Mouse, Rat
Description	Boster Bio Anti-CK2a CSNK2A1 Antibody (Catalog # A02398). Tested in WB applications. This antibody reacts with Human, Mouse, Rat.
Application	WB
Clonality	Polyclonal
Formulation	Supplied at 1.0mg/mL in phosphate buffered saline (without Mg ²⁺ and Ca ²⁺), pH 7.4, 150mM NaCl, 0.02% sodium azide and 50% glycerol.
Storage Instructions	Store at -20°C for one year. For short term storage and frequent use, store at 4°C for up to one month. Avoid repeated freeze-thaw cycles.
Host	Rabbit
Uniprot ID	P68400

Technical Details

Immunogen	Peptide sequence around aa. 353~357 (S-G-I-S-S) derived from Human CK2 α .
Predicted Reactive Species	Boar, Bovine, Canine, Golden Hamster
Form	Liquid
Concentration	1 mg/ml
Purification	Antibodies were produced by immunizing rabbits with synthetic peptide and KLH conjugates. Antibodies were purified by affinity-chromatography using epitope-specific peptide.

Suggested Dilutions

Dilute the sample so that the expected range of concentrations fall within the detection range of this kit.

If the expected range of concentration is unknown, a pilot test should be conducted to decide the optimal dilution ratio for your samples.

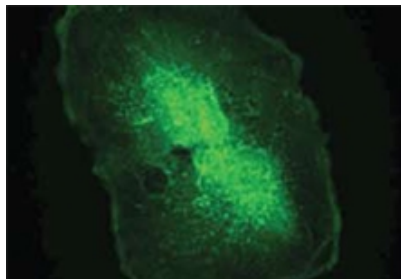
Some PubMed article(s) citing the expression level of this target are as follows:

Boster Bio's internal QC testing used:

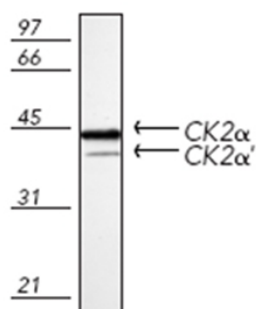
Predicted MW: 42kd

Western blotting: 1:1000

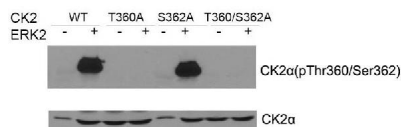
Anti-CK2a CSNK2A1 Antibody (A02398) Images



Casein Kinase 2 Alpha was detected in immunocytochemistry of human CACO-2 cell using rabbit anti-Casein Kinase 2 Alpha Antigen Affinity purified polyclonal antibody (Catalog # A02398) at 1.7-8.5ug/ml.



Western blot analysis of Casein Kinase 2 Alpha expression in mouse spleen extract (lane 1). Casein Kinase 2 Alpha at 41KD and 45KD was detected using rabbit anti-Casein Kinase 2 Alpha polyclonal antibody (Catalog # A02398) at 4ug/mL. The blot was developed using chemiluminescence (ECL) method (Catalog # EK1002).



Western blot of CK2a(Phospho-Thr360/Ser362) antibody and CK2a antibody(A02398) in vitro kinase assay. Both purified ERK2 and CK2 were used.

Submit a product review to Biocompare.com

Submit a review of this product to Biocompare.com to receive a \$20 Amazon.com giftcard! Your reviews help your fellow scientists make the right decisions. Thank you for your contribution.



Anti-CK2a CSNK2A1 Antibody