

Anti-BAF250B ARID1B Antibody

Catalog Number: A02556

About ARID1B

Involved in transcriptional activation and repression of select genes by chromatin remodeling (alteration of DNA-nucleosome topology). Belongs to the neural progenitors-specific chromatin remodeling complex (npBAF complex) and the neuron-specific chromatin remodeling complex (nBAF complex). During neural development a switch from a stem/progenitor to a post-mitotic chromatin remodeling mechanism occurs as neurons exit the cell cycle and become committed to their adult state. The transition from proliferating neural stem/progenitor cells to post-mitotic neurons requires a switch in subunit composition of the npBAF and nBAF complexes. As neural progenitors exit mitosis and differentiate into neurons, npBAF complexes which contain ACTL6A/BAF53A and PHF10/BAF45A, are exchanged for homologous alternative ACTL6B/BAF53B and DPF1/BAF45B or DPF3/BAF45C subunits in neuron-specific complexes (nBAF). The npBAF complex is essential for the self-renewal/proliferative capacity of the multipotent neural stem cells. The nBAF complex along with CREST plays a role regulating the activity of genes essential for dendrite growth. By similarity. Binds DNA non-specifically.

Mungall A.J., Nature 425:805-811(2003).
Mangel L., J. Biol. Chem. 273:30466-30471(1998).
Imbert G., Nat. Genet. 14:285-291(1996).

Overview

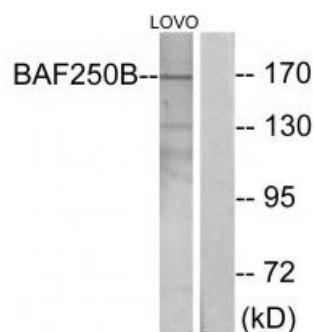
Product Name	Anti-BAF250B ARID1B Antibody
Reactive Species	Human, Rat
Description	Boster Bio Anti-BAF250B ARID1B Antibody (Catalog # A02556). Tested in WB, IF applications. This antibody reacts with Human, Rat.
Application	IF, WB
Clonality	Polyclonal
Formulation	Rabbit IgG in phosphate buffered saline (without Mg ²⁺ and Ca ²⁺), pH 7.4, 150mM NaCl, 0.02% sodium azide and 50% glycerol.
Storage Instructions	Store at -20°C for one year. For short term storage and frequent use, store at 4°C for up to one month. Avoid repeated freeze-thaw cycles.
Host	Rabbit
Uniprot ID	Q8NFD5

Technical Details

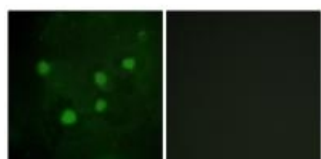
Immunogen	Synthesized peptide derived from interal of human BAF250B.
Predicted Reactive Species	Boar, Bovine, Canine, Golden Hamster

Isotype	IgG
Form	Liquid
Concentration	1 mg/ml
Purification	The antibody was affinity-purified from rabbit antiserum by affinity-chromatography using epitope-specific immunogen.
Suggested Dilutions	<p>Dilute the sample so that the expected range of concentrations fall within the detection range of this kit.</p> <p>If the expected range of concentration is unknown, a pilot test should be conducted to decide the optimal dilution ratio for your samples.</p> <p>Some PubMed article(s) citing the expression level of this target are as follows:</p> <p>Boster Bio's internal QC testing used:</p> <p>Western blotting: 1:500~1:3000</p> <p>Immunofluorescence: 1:100~1:500</p>

Anti-BAF250B ARID1B Antibody (A02556) Images



Western blot analysis of extracts from LOVO cells, using BAF250B antibody A02556.



Immunofluorescence analysis of HUVEC cells, using BAF250B antibody A02556.

Submit a product review to Biocompare.com

Submit a review of this product to Biocompare.com to receive a \$20 Amazon.com giftcard! Your reviews help your fellow scientists make the right decisions. Thank you for your contribution.



Anti-BAF250B ARID1B Antibody