

## Anti-CaMKII Camk2d Antibody

Catalog Number: A02611

### About Camk2d

SOD3 (SUPEROXIDE DISMUTASE 3) also called SUPEROXIDE DISMUTASE, EXTRACELLULAR, EC-SOD, and Cu-Zn, is an enzyme that in humans is encoded by the SOD3 gene. This gene encodes a member of the superoxide dismutase (SOD) protein family. SODs are antioxidant enzymes that catalyze the dismutation of two superoxide radicals into hydrogen peroxide and oxygen. Hendrickson et al. (1990) mapped the SOD3 gene to 4pter-q21 by a study of somatic cell hybrids. Stern et al. (2003) narrowed the assignment to 4p15.3-p15.1 by somatic cell and radiation hybrid analysis, linkage mapping, and FISH. The product of this gene is thought to protect the brain, lungs, and other tissues from oxidative stress. The protein is secreted into the extracellular space and forms a glycosylated homotetramer that is anchored to the extracellular matrix (ECM) and cell surfaces through an interaction with heparan sulfate proteoglycan and collagen. A fraction of the protein is cleaved near the C-terminus before secretion to generate circulating tetramers that do not interact with the ECM.

### Overview

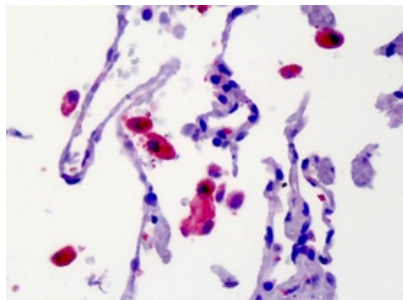
Product Name	Anti-CaMKII Camk2d Antibody
Reactive Species	Human, Mouse, Rat
Description	Boster Bio Anti-CaMKII Camk2d Antibody catalog # A02611. Tested in IHC, WB applications. This antibody reacts with Human, Mouse, Rat.
Application	IHC, WB
Clonality	Polyclonal
Formulation	Each vial contains 50% glycerol and 0.09% sodium azide.
Storage Instructions	Store at -20°C for one year. For short-term storage and frequent use, store at 4°C for up to one month. Avoid repeated freeze-thaw cycles.
Host	Rabbit
Uniprot ID	P15791

### Technical Details

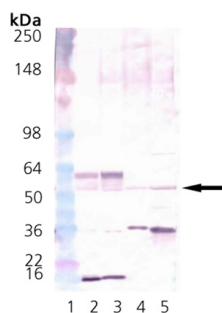
Immunogen	Synthetic peptide corresponding to the N-terminus of rat CaMKII delta.
Predicted Reactive Species	Bovine, Goat, Guinea Pig, Hamster, Monkey, Sheep
Cross Reactivity	No cross reactivity with other proteins.
Isotype	IgG
Form	Liquid
Concentration	0.5-1mg/ml, actual concentration vary by lot. Use suggested dilution ratio to decide dilution

	procedure.
Purification	Protein A affinity purified.
Suggested Dilutions	<p>Dilute the sample so that the expected range of concentrations fall within the detection range of this kit.</p> <p>If the expected range of concentration is unknown, a pilot test should be conducted to decide the optimal dilution ratio for your samples.</p> <p>Some PubMed article(s) citing the expression level of this target are as follows:</p> <p>Boster Bio's internal QC testing used:</p> <p>WB, Colorimetric, 1:500, Human, Mouse, Rat</p>

## Anti-CaMKII Camk2d Antibody (A02611) Images



CaMKII was detected in paraffin-embedded sections of human lung tissues using rabbit anti-CaMKII Antigen Affinity purified polyclonal antibody (Catalog # A02611) at 10 ug/mL. The immunohistochemical section was developed using SABC method (Catalog # SA1022).



Western blot analysis of CaMKII expression in MW marker (lane 1), mouse brain extract (lane 2), rat brain extract (lane 3), HELA whole cell lysates (lane 4) and HS-67 whole cell lysates (lane 5). CaMKII at 50-60KD was detected using rabbit anti-CaMKII Antigen Affinity purified polyclonal antibody (Catalog # A02611) at 1: 500. The blot was developed using colorimetric method.

## Submit a product review to Biocompare.com

Submit a review of this product to Biocompare.com to receive a \$20 Amazon.com giftcard! Your reviews help your fellow scientists make the right decisions. Thank you for your contribution.



Anti-CaMKII Camk2d Antibody