

## Anti-GluR1 (Ab-863) Antibody

Catalog Number: A02677

### About GRIA1

Glutamate receptors are the predominant excitatory neurotransmitter receptors in the mammalian brain and are activated in a variety of normal neurophysiologic processes. These receptors are heteromeric protein complexes with multiple subunits, each possessing transmembrane regions, and all arranged to form a ligand-gated ion channel. The classification of glutamate receptors is based on their activation by different pharmacologic agonists. This gene belongs to a family of  $\alpha$ -amino-3-hydroxy-5-methyl-4-isoxazole propionate (AMPA) receptors. Alternatively spliced transcript variants encoding different isoforms have been found for this gene.

Emamian ES, et al. (2004) J Neurosci. 24(7): 1561-4  
Palmer, C.L. et al. (2005) Pharmacol. Rev. 57, 253-277.

### Overview

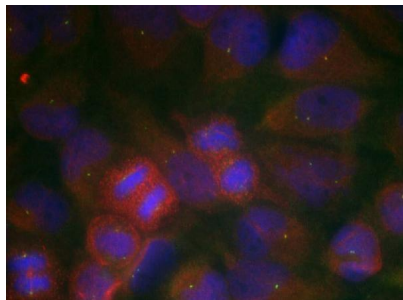
|                      |  |
|----------------------|--|
| Product Name         | Anti-GluR1 (Ab-863) Antibody   |
| Reactive Species     | Human, Mouse, Rat  |
| Description          | Boster Bio Anti-GluR1 (Ab-863) Antibody (Catalog # A02677). Tested in IF applications. This antibody reacts with Human, Mouse, Rat.                          |
| Application          | IF   |
| Clonality            | Polyclonal 5H2   |
| Formulation          | Supplied at 1.0mg/mL in phosphate buffered saline (without Mg <sup>2+</sup> and Ca <sup>2+</sup> ), pH 7.4, 150mM NaCl, 0.02% sodium azide and 50% glycerol. |
| Storage Instructions | Store at -20°C for one year. For short term storage and frequent use, store at 4°C for up to one month. Avoid repeated freeze-thaw cycles.                   |
| Host                 | Rabbit   |
| Uniprot ID           | P42261   |

### Technical Details

|                            |  |
|----------------------------|--|
| Immunogen                  | Peptide sequence around aa.861~865 (R-N-S-G-A) derived from Human GluR1. |
| Predicted Reactive Species | Canine, Equine, Guinea Pig, Rabbit                                       |
| Isotype                    | IgG  |
| Form                       | Liquid   |
| Concentration              | 1 mg/ml  |

|                     |  |
|---------------------|--|
| Purification        | Antibodies were produced by immunizing rabbits with synthetic peptide and KLH conjugates.<br>Antibodies were purified by affinity-chromatography using epitope-specific peptide.   |
| Suggested Dilutions | Dilute the sample so that the expected range of concentrations fall within the detection range of this kit.<br>If the expected range of concentration is unknown, a pilot test should be conducted to decide the optimal dilution ratio for your samples.<br>Some PubMed article(s) citing the expression level of this target are as follows:<br>Boster Bio's internal QC testing used:<br>Predicted MW: 110kd<br>Immunofluorescence: 1:100~1:200 |

## Anti-GluR1 (Ab-863) Antibody (A02677) Images



Immunofluorescence staining of methanol-fixed HeLa cells using GluR1(Ab-863) Antibody #A02677.

## Submit a product review to Biocompare.com

Submit a review of this product to Biocompare.com to receive a \$20 Amazon.com giftcard! Your reviews help your fellow scientists make the right decisions. Thank you for your contribution.



Anti-GluR1 (Ab-863) Antibody