

## Anti-Keratin 20 KRT20 Antibody

Catalog Number: A02828-1

### About KRT20

Plays a significant role in maintaining keratin filament organization in intestinal epithelia. When phosphorylated, plays a role in the secretion of mucin in the small intestine By similarity.

Qin Zhou, Mol. Biol. Cell, Jul 2003; 14: 2959.

Qin Zhou, J. Biol. Chem., Jun 2006; 281: 16453 - 16461.

F Smedts, Am. J. Pathol., Feb 1993; 142: 403.

RK Miller, J. Cell Biol., May 1991; 113: 843.

### Overview

|                      |  |
|----------------------|--|
| Product Name         | Anti-Keratin 20 KRT20 Antibody   |
| Reactive Species     | Human, Mouse, Rat  |
| Description          | Boster Bio Anti-Keratin 20 KRT20 Antibody (Catalog # A02828-1). Tested in WB, IHC applications. This antibody reacts with Human, Mouse, Rat.       |
| Application          | IHC, WB  |
| Clonality            | Polyclonal   |
| Formulation          | Rabbit IgG in phosphate buffered saline (without Mg <sup>2+</sup> and Ca <sup>2+</sup> ), pH 7.4, 150mM NaCl, 0.02% sodium azide and 50% glycerol. |
| Storage Instructions | Store at -20°C for one year. For short term storage and frequent use, store at 4°C for up to one month. Avoid repeated freeze-thaw cycles.         |
| Host                 | Rabbit   |
| Uniprot ID           | P35900   |

### Technical Details

|                            |  |
|----------------------------|--|
| Immunogen                  | Synthesized peptide derived from human Keratin 20.   |
| Predicted Reactive Species | Boar, Bovine, Canine, Golden Hamster   |
| Isotype                    | IgG  |
| Form                       | Liquid   |
| Concentration              | 1 mg/ml  |
| Purification               | The antibody was affinity-purified from rabbit antiserum by affinity-chromatography using epitope- |

specific immunogen.

**Suggested Dilutions**

Dilute the sample so that the expected range of concentrations fall within the detection range of this kit.

If the expected range of concentration is unknown, a pilot test should be conducted to decide the optimal dilution ratio for your samples.

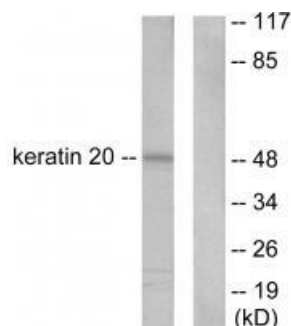
Some PubMed article(s) citing the expression level of this target are as follows:

Boster Bio's internal QC testing used:

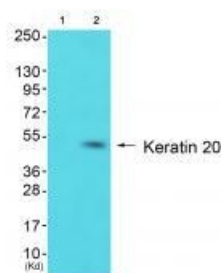
Western blotting: 1:500~1:3000

Immunohistochemistry: 1:50~1:100

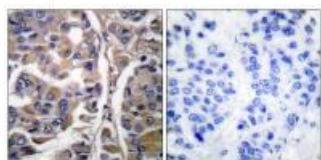
## Anti-Keratin 20 KRT20 Antibody (A02828-1) Images



Western blot analysis of extracts from HeLa cells, using Keratin 20 antibody A02828-1.



Western blot analysis of extracts from HepG2 cells (Lane 2), using Keratin 20 antibody A02828-1. The lane on the left is treated with synthesized peptide.



Immunohistochemical analysis of paraffin-embedded human breast carcinoma tissue using Keratin 20 antibody A02828-1.

## Submit a product review to Biocompare.com

Submit a review of this product to Biocompare.com to receive a \$20 Amazon.com giftcard! Your reviews help your fellow scientists make the right decisions. Thank you for your contribution.



Anti-Keratin 20 KRT20 Antibody