

## Anti-Collagen VI alpha3 COL6A3 Antibody

Catalog Number: A02844

### Introduction

CD11b is a 165-kDa adhesion glycoprotein that associates with the 95-kDa integrin beta2 (CD18) to form the CD11b/CD18 complex, also known as Mac-1 or CR3. CD11b is expressed on activated lymphocytes, monocytes, granulocytes, and a subset of NK cells. CD11b functions in cell-cell and cell-substrate interactions and is a receptor for iC3b, CD54 (ICAM-1), CD102 (ICAM-2) and CD50 (ICAM-3). The OKM1 antibody directed against the CD11b antigen on human monocytes and granulocytes.

This antibody is routinely tested by flow cytometric analysis. Flow cytometry and other applications were tested during antibody development by CapricoBio or are reported in the literature.

### Application Information

Each lot of this antibody has been quality control tested by flow cytometric analysis of human PBMCs. For flow cytometric staining, the recommended dose of this antibody is 0.5ug per 1x10<sup>6</sup> cells in 100ul of staining volume followed by any fluorochrome conjugated streptavidin. It is strongly suggested that the antibody reactivity be empirically titrated for optimal performance in the application of interest.

### About COL6A3

Integrin alpha 1 (ITGA1) chain associates with the beta 1 (ITGB1) chain to form a heterodimer that functions as a dual laminin/collagen receptor in neural cells and hematopoietic cells. ITGA1 has a 206-amino acid I domain in its N-terminal half, followed by 3 divalent cation-binding sites and a C-terminal transmembrane domain with a short cytoplasmic tail. It also has 28 potential N-glycosylation sites. Human ITGA1 was expressed in a mouse fibroblast cell line as a 180-kD protein. ITGA1 is involved in the early remodeling of osteoarthritic cartilage and plays an essential role in the regulation of mesenchymal stem cell proliferation and cartilage production. It also plays an essential role in the regulation of MSC proliferation and cartilage production.

### Overview

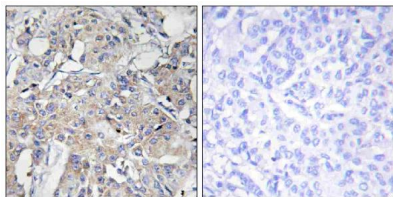
|                      |   |
|----------------------|---|
| Product Name         | Anti-Collagen VI alpha3 COL6A3 Antibody   |
| Reactive Species     | Human, Mouse  |
| Description          | Boster Bio Anti-Collagen VI alpha3 COL6A3 Antibody (Catalog# A02844). Tested in IHC-P, IF, ICC, ELISA applications. This antibody reacts with Human, Mouse. |
| Application          | ELISA, IF, IHC-P, ICC   |
| Clonality            | Polyclonal  |
| Formulation          | PBS containing 50% glycerol, 0.5% BSA and 0.02% sodium azide.   |
| Storage Instructions | Store at -20°C for one year. For short-term storage and frequent use, store at 4°C for up to one month. Avoid repeated freeze-thaw cycles.                  |
| Host                 | Rabbit  |

|            |        |
|------------|--------|
| Uniprot ID | P12111 |
|------------|--------|

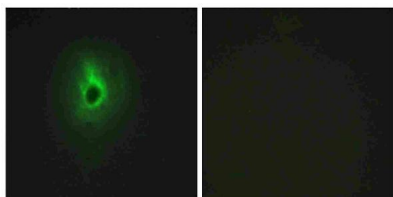
## Technical Details

|                               |   |
|-------------------------------|---|
| Immunogen                     | A peptide derived from human Collagen VI alpha3. Immunogen sequence location: 2261-2310   |
| Recommended Detection Systems | Boster recommends Enhanced Chemiluminescent Kit with anti-Rabbit IgG (EK1002) for Western blot, and HRP Conjugated anti-Rabbit IgG Super Vision Assay Kit (SV0002-1) for IHC(P).  |
| Cross Reactivity              | No cross reactivity with other proteins.  |
| Isotype                       | Rabbit IgG  |
| Form                          | Liquid  |
| Concentration                 | 1 mg/ml   |
| Purification                  | The antibody was purified from rabbit antiserum by affinity-chromatography using immunogen.   |
| Suggested Dilutions           | <p>Dilute the sample so that the expected range of concentrations fall within the detection range of this kit.</p> <p>If the expected range of concentration is unknown, a pilot test should be conducted to decide the optimal dilution ratio for your samples.</p> <p>Some PubMed article(s) citing the expression level of this target are as follows:</p> <p>Boster Bio's internal QC testing used:</p> <p>Immunohistochemistry, 1:100 - 1:300</p> <p>Immunofluorescence, 1:200 - 1:1000</p> <p>ELISA, 1:40000</p> <p>Not yet tested in other applications.</p> |

## Anti-Collagen VI alpha3 COL6A3 Antibody (A02844) Images



Immunohistochemistry analysis of paraffin-embedded human breast carcinoma tissue, using Collagen VI alpha3 Antibody. The picture on the right is blocked with the synthesized peptide.



Immunofluorescence analysis of HeLa cells, using Collagen VI alpha3 Antibody. The picture on the right is blocked with the synthesized peptide.

## Submit a product review to Biocompare.com

Submit a review of this product to Biocompare.com to receive a \$20 Amazon.com giftcard! Your reviews help your fellow scientists make the right decisions. Thank you for your contribution.



Anti-Collagen VI alpha3 COL6A3 Antibody