

Anti-CRMP-2 (Ab-509) DPYSL2 Antibody

Catalog Number: A02860

About DPYSL2

Plays a role in neuronal development and polarity, as well as in axon growth and guidance, neuronal growth cone collapse and cell migration. Necessary for signaling by class 3 semaphorins and subsequent remodeling of the cytoskeleton. May play a role in endocytosis.

Goshima Y., Nature 376:509-514(1995).

Hamajima N., Gene 180:157-163(1996).

Kitamura K., DNA Res. 6:291-297(1999).

Overview

Product Name	Anti-CRMP-2 (Ab-509) DPYSL2 Antibody
Reactive Species	Human
Description	Boster Bio Anti-CRMP-2 (Ab-509) DPYSL2 Antibody (Catalog # A02860). Tested in WB, IHC applications. This antibody reacts with Human.
Application	IHC, WB
Clonality	Polyclonal
Formulation	Rabbit IgG in phosphate buffered saline (without Mg ²⁺ and Ca ²⁺), pH 7.4, 150mM NaCl, 0.02% sodium azide and 50% glycerol.
Storage Instructions	Store at -20°C for one year. For short term storage and frequent use, store at 4°C for up to one month. Avoid repeated freeze-thaw cycles.
Host	Rabbit
Uniprot ID	Q16555

Technical Details

Immunogen	Synthesized non-phosphopeptide derived from human CRMP-2 around the phosphorylation site of threonine 509 (S-V-T(p)-P-K).
Predicted Reactive Species	Boar, Bovine, Canine, Golden Hamster
Isotype	IgG
Form	Liquid
Concentration	1 mg/ml
Purification	The antibody was affinity-purified from rabbit antiserum by affinity-chromatography using epitope-

specific immunogen.

Suggested Dilutions

Dilute the sample so that the expected range of concentrations fall within the detection range of this kit.

If the expected range of concentration is unknown, a pilot test should be conducted to decide the optimal dilution ratio for your samples.

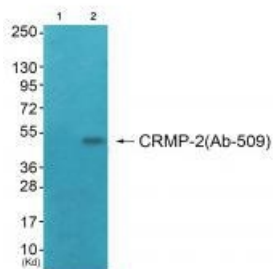
Some PubMed article(s) citing the expression level of this target are as follows:

Boster Bio's internal QC testing used:

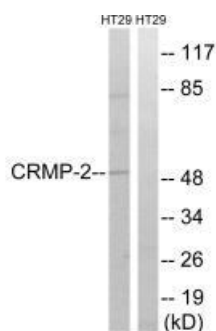
Western blotting: 1:500~1:3000

Immunohistochemistry: 1:50~1:100

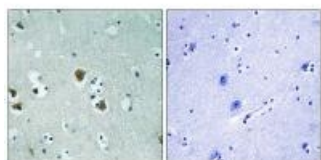
Anti-CRMP-2 (Ab-509) DPYSL2 Antibody (A02860) Images



Western blot analysis of extracts from COS7 cells (Lane 2), using CRMP-2 (Ab-509) antibody A02860. The lane on the left is treated with synthesized peptide.



Western blot analysis of extracts from HT-29 cells, treated with heat shock, using CRMP-2 (Ab-509) antibody A02860.



Immunohistochemistry analysis of paraffin-embedded human brain tissue using CRMP-2 (Ab-509) antibody A02860.

Submit a product review to Biocompare.com

Submit a review of this product to Biocompare.com to receive a \$20 Amazon.com giftcard! Your reviews help your fellow scientists make the right decisions. Thank you for your contribution.



Anti-CRMP-2 (Ab-509) DPYSL2 Antibody