

Anti-E2F-2 (K236) Antibody

Catalog Number: A02896

About E2F2

Binds with high affinity to RNA molecules that contain AU-rich elements (AREs) found within the 3'-UTR of many proto-oncogenes and cytokine mRNAs. Also binds to double- and single-stranded DNA sequences in a specific manner and functions as a transcription factor. Each of the RNA-binding domains specifically can bind solely to a single-stranded non-monotonous 5'-UUAG-3' sequence and also weaker to the single-stranded 5'-TTAGGG-3' telomeric DNA repeat. Binds RNA oligonucleotides with 5'-UUAGGG-3' repeats more tightly than the telomeric single-stranded DNA 5'-TTAGGG-3' repeats. Binding of RRM1 to DNA inhibits the formation of DNA quadruplex structure which may play a role in telomere elongation. May be involved in translationally coupled mRNA turnover. Implicated with other RNA-binding proteins in the cytoplasmic deadenylation/translational and decay interplay of the FOS mRNA mediated by the major coding-region determinant of instability (mCRD) domain. May play a role in the regulation of the rhythmic expression of circadian clock core genes. Directly binds to the 3'UTR of CRY1 mRNA and induces CRY1 rhythmic translation. May also be involved in the regulation of PER2 translation.

Kajita Y., J. Biol. Chem. 270:22167-22175(1995).

Dempsey L.A., Genomics 49:378-384(1998).

Tolnay M., Biochem. J. 338:417-425(1999).

Grosset C., Cell 103:29-40(2000)

Overview

Product Name	Anti-E2F-2 (K236) Antibody
Reactive Species	Human, Mouse, Rat
Description	Boster Bio Anti-E2F-2 (K236) Antibody catalog # A02896. Tested in IHC applications. This antibody reacts with Human, Mouse, Rat.
Application	IHC
Clonality	Polyclonal
Formulation	Rabbit IgG, 1mg/ml in PBS with 0.02% sodium azide, 50% glycerol, pH7.2
Storage Instructions	Store at -20°C for one year. For short term storage and frequent use, store at 4°C for up to one month. Avoid repeated freeze-thaw cycles.
Host	Rabbit
Uniprot ID	Q14209

Technical Details

Immunogen	Synthetic peptide, corresponding to amino acids 202-252 of Human E2F-2.
Predicted Reactive Species	Boar, Bovine, Canine, Golden Hamster

Isotype	Rabbit IgG
Form	Liquid
Concentration	1 mg/ml
Purification	The antibody was affinity-purified from rabbit antiserum by affinity-chromatography using epitope-specific immunogen and the purity is > 95% (by SDS-PAGE).
Suggested Dilutions	<p>Dilute the sample so that the expected range of concentrations fall within the detection range of this kit.</p> <p>If the expected range of concentration is unknown, a pilot test should be conducted to decide the optimal dilution ratio for your samples.</p> <p>Some PubMed article(s) citing the expression level of this target are as follows:</p> <p>Boster Bio's internal QC testing used:</p> <p>IHC: 1:50-1:200</p>

Anti-E2F-2 (K236) Antibody (A02896) Images

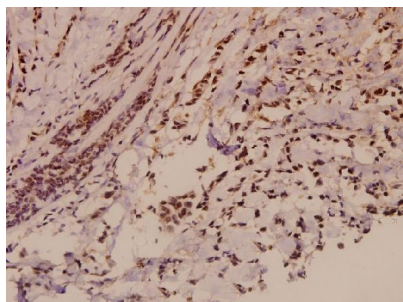


Figure 1. Immunohistochemistry validation of E2F2 using Anti-E2F-2 (K236) Antibody (A02896).

Immunohistochemistry (IHC) analyzes of E2F-2 (K236) pAb in paraffin-embedded human breast carcinoma tissue at 1:50. For more protocol information of IHC

1 Publications Citing This Product

1. PubMed ID: 26378521, GCN5 Potentiates Glioma Proliferation and Invasion via STAT3 and AKT Signaling Pathways

Visit bosterbio.com/anti-e2f-2-k236-antibody-a02896-boster.html to see all 1 publications.

Submit a product review to Biocompare.com

Submit a review of this product to Biocompare.com to receive a \$20 Amazon.com giftcard! Your reviews help your fellow scientists make the right decisions. Thank you for your contribution.



Anti-E2F-2 (K236) Antibody